

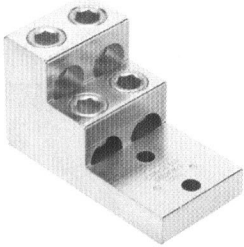
PANDUIT® Aluminum Four Barrel Connectors (Types LAM4SB, LAM4D and SRA)

Aluminum Connectors

For Use With Aluminum Or Copper Cables
For 600V Applications

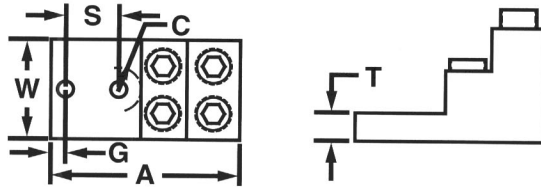
Four Barrel Type LAM4SB

Two-Hole Tongue



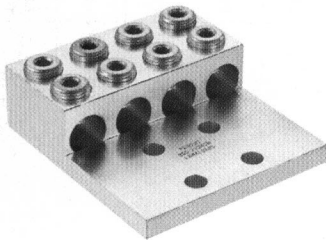
Part Number	Conductor Size Range	Bolt Hole Size	Hex Key	Dimensions (In.)						Std. Pkg. Qty.
				A	W	G	S	C	T	
LAM4SB600-38-1	#2 - 600	3/8"	1/2"	4.91	2.47	.37	1.38	.59	.75	1
LAM4SB750-38-1	#3/0 - 750	3/8"	1/2"	4.94	2.62	.37	1.38	.59	.75	1

The use of PANDUIT oxide inhibiting joint compound (CMP-100) is recommended. Refer to page 34.



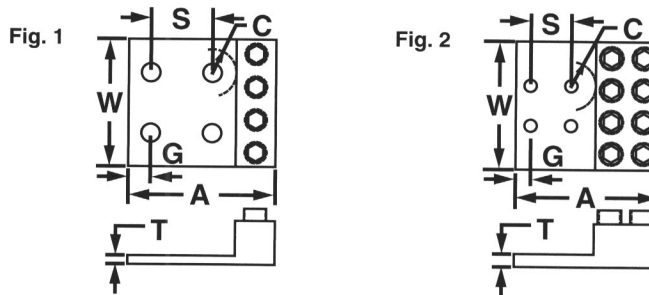
Four Barrel Type LAM4D

Four-Hole Tongue



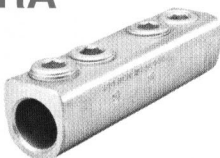
Part Number	Conductor Size Range	Bolt Hole Size	Hex Key Size	Dimensions (In.)						Fig. No.	Std. Pkg. Qty.
				A	W	G	S	C	T		
◆ LAM4D250-12-1	#6 - 250	1/2"	1/4"	4/37	3.69	.62	1.75	.62	.22	1	1
◆ LAM4D350-12-1	#6 - 350	1/2"	5/16"	4/50	3.94	.62	1.75	.62	.25	1	1
◆ LAM4D600-12-1	#2 - 600	1/2"	3/8"	4/62	5.00	.56	1.75	.69	.31	1	1
◆ LAM4LD800-12-1	350 - 800	1/2"	9/16"	6/19	5.62	.62	1.75	1.07	.38	2	1

The use of PANDUIT oxide inhibiting joint compound (CMP-100) is recommended. Refer to page 34.
◆NEMA hole sizes and spacing.



Dual Rated Aluminum Splicer/Reducer Type SRA

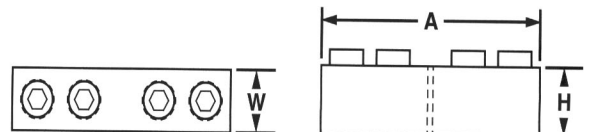
Rated for 600 Volts



Part Number	Wire Range		Dimensions (in.)			No. of Screws	Screw Dia.	Hex Size	Std. Pkg. Qty.
	Max.	Min.	A	W	H				
* SRA2-X	2	14	1.19	.55	.55	2	3/8	S	10
* SRA1/0-X	1/0	14	1.91	.63	.69	2	7/16	S	10
SRA250-X	250	6	4.09	1.00	1.09	4	5/8	5/16	10
SRA350-X	350	6	4.34	1.00	1.09	4	11/16	5/16	10
SRA500-3	500	3/0	4.78	1.25	1.38	4	13/16	3/8	3
SRA750-1	750	250	6.06	1.44	1.63	4	15/16	1/2	1
SRA1000-1	1000	500	8.69	1.72	1.88	6	1-1/8	9/16	1

The use of PANDUIT oxide inhibiting joint compound (CMP-100) is recommended. Refer to page 34.

- Dual rated, can be used with aluminum and copper conductors
- Lightweight, durable aluminum alloy construction, tin plated to resist oxidation
- Rounded bottoms to facilitate taping
- Solid center barrier prevents contact of dissimilar metal conductors



*Slotted Screws