

GP500LSS06S

POWERLINE N-CHANNEL IGBT MODULE

APPLICATIONS

- High Power Switching.
- Motor Control.
- UPS.
- AC And DC Servo Drive Amplifiers.

FEATURES

- n - Channel.
- Enhancement Mode.
- High Input Impedance.
- High Switching Speed.
- Latch-Free Operation.
- Low Forward Voltage Drop.
- Isolated Base.
- Short Circuit Capability (10μs).

CIRCUIT

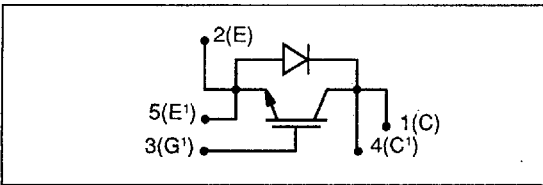


Fig.1 Single switch circuit diagram

TYPICAL KEY PARAMETERS

V_{CES}	600V
$V_{CE(sat)}$	2.1V
$I_{C(Cont)}$	500A
$I_{C(PK)}$	1000A
t_r	290ns
t_f	430ns

PACKAGE OUTLINE

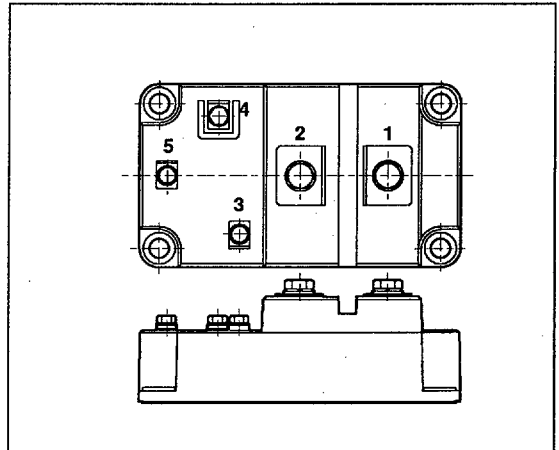


Fig.2

Outline type code: L. See package details for further information.

RATINGS

$T_{case} = 25^{\circ}C$ unless stated otherwise.				
Symbol	Parameter	Test Conditions	Max.	Units
V_{CES}	Collector-emitter voltage	$V_{GE} = 0V$	600	V
V_{GES}	Gate-emitter voltage		±20	V
I_c	Collector current	DC, $T_{case} = 75^{\circ}C$	500	A
$I_{C(PK)}$		1ms, $T_{case} = 75^{\circ}C$	1000	A
P_{max}	Maximum power dissipation		2500	W
V_{isol}	Isolation voltage	Commoned terminals to base plate. AC RMS, 1 min, 50Hz	2500	V

THERMAL AND MECHANICAL RATINGS

Symbol	Parameter	Conditions	Min.	Max.	Units
$R_{\theta(j-c)}$	Thermal resistance	DC junction to case	-	0.05	°C/W
$R_{\theta(j-h)}$	Thermal resistance - Case to heatsink	Mounting torque 5Nm (with mounting grease)	-	0.007	°C/W
T_j	Junction temperature	-	-	150	°C
T_{stg}	Storage temperature range	-	-40	150	°C
-	Screw torque (mounting)	-	-	6.0	Nm

DC ELECTRICAL CHARACTERISTICS

 $T_{case} = 25^\circ\text{C}$ unless stated otherwise.

Symbol	Parameter	Conditions	Min.	Typ.	Max.	Units
I_{CES}	Collector cut-off current	$V_{GE} = 0V, V_{CE} = V_{CES}$	-	-	4	mA
I_{GES}	Gate leakage current	$V_{GE} = \pm 20V$	-	-	± 2	μA
$V_{GE(TH)}$	Gate threshold voltage	$I_C = 20\text{mA}, V_{GE} = V_{CE}$	4	-	7.5	V
$V_{CE(SAT)}$	Collector-emitter saturation voltage	$V_{GE} = 15V, I_C = 500A$	-	2.1	2.8	V
		$V_{GE} = 15V, I_C = 500A, T_{case} = 125^\circ\text{C}$	-	2.3	3.0	V

DIODE DC CHARACTERISTICS

 $T_{case} = 25^\circ\text{C}$ unless stated otherwise.

Symbol	Parameter	Conditions	Min.	Typ.	Max.	Units
I_F	Diode forward current	DC, $T_{case} = 75^\circ\text{C}$	-	-	300	A
I_{FM}	Diode maximum forward current	$T_{case} = 75^\circ\text{C}, t_p = 1\text{ms}$	-	-	1000	A
V_F	Diode forward voltage	$I_F = 500A$	-	1.7	2.2	V
$R_{\theta(j-c)}$	Thermal resistance	DC junction to case	-	-	0.17	°C/W

AC ELECTRICAL CHARACTERISTICS

Symbol	Parameter	Conditions	Min.	Typ.	Max.	Units
C_{iss}	Input capacitance	$V_{CE} = 25V, V_{GE} = 0V, f = 1\text{MHz}$	-	58000	-	pF
C_{oss}	Output capacitance	$V_{CE} = 25V, V_{GE} = 0V, f = 1\text{MHz}$	-	8800	-	pF
C_{res}	Reverse transfer capacitance	$V_{CE} = 25V, V_{GE} = 0V, f = 1\text{MHz}$	-	8400	-	pF

GP500LSS06S

INDUCTIVE SWITCHING CHARACTERISTICS

For definition of switching waveforms, refer to figures 6 and 7 shown in application note AN4504 IGBT Ratings and Characteristics.

$T_{case} = 125^{\circ}\text{C}$ unless stated otherwise.						
Symbol	Parameter	Conditions	Min.	Typ.	Max.	Units
$t_{d(off)}$	Turn-off delay time	$I_C = 500\text{A}$, $V_{GE} = \pm 15\text{V}$, $V_{CE} = 50\% V_{CES}$, $R_{G(ON)} = R_{G(OFF)} = 1.5\Omega$	-	560	-	ns
t_f	Fall time		-	430	-	ns
E_{OFF}	Turn-off energy loss		-	46	-	mJ
$t_{d(on)}$	Turn-on delay time		-	810	-	ns
t_r	Rise time		-	290	-	ns
E_{ON}	Turn-on energy loss		-	36	-	mJ

DIODE DYNAMIC CHARACTERISTICS (INDUCTIVE)

$T_{case} = 125^{\circ}\text{C}$ unless stated otherwise.						
Symbol	Parameter	Conditions	Min.	Typ.	Max.	Units
t_{rr}	Reverse recovery time	$T_{case} = 25^{\circ}\text{C}$, $I_F = 500\text{A}$, $V_R = 50\% V_{CES}$, $dI_F/dt = 800\text{A}/\mu\text{s}$	-	90	-	ns
Q_{rr}	Reverse recovery charge		-	2	-	μC
t_{rr}	Reverse recovery time	$I_F = 500\text{A}$, $V_R = 50\% V_{CES}$, $dI_F/dt = 800\text{A}/\mu\text{s}$	-	228	-	ns
Q_{rr}	Reverse recovery charge		-	11	-	μC

CURVES

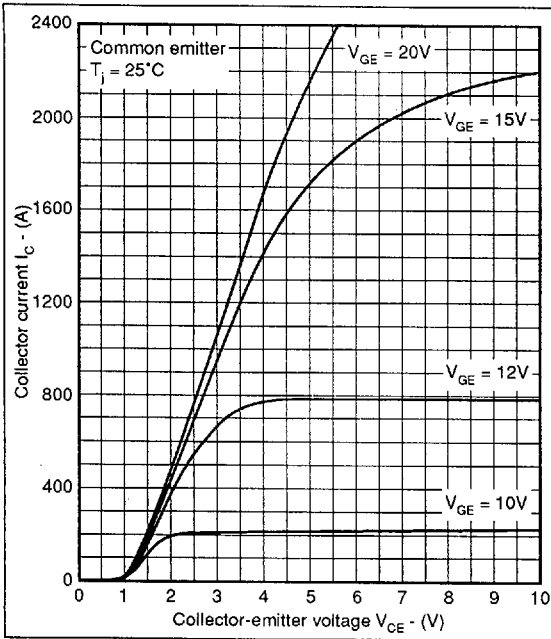


Fig.3 Typical output characteristics @ 25°C

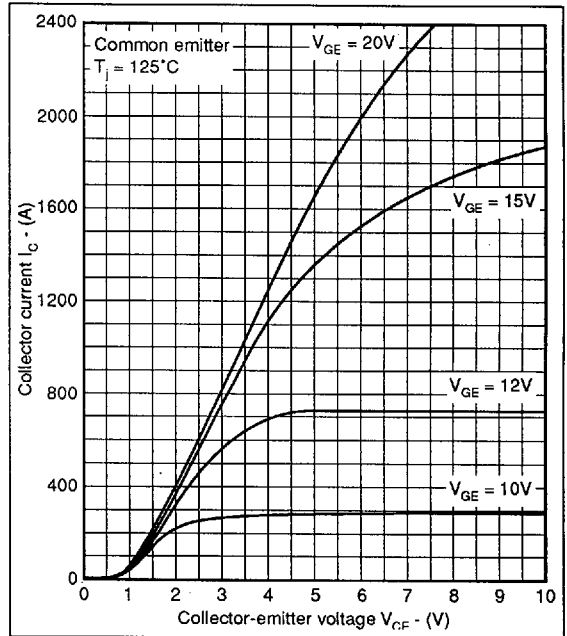


Fig.4 Typical output characteristics @ 125°C

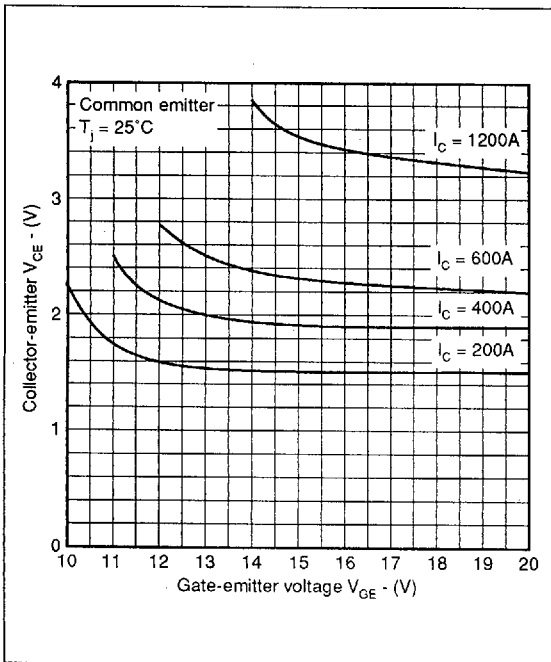


Fig.5 Typical transfer characteristics @ 25°C

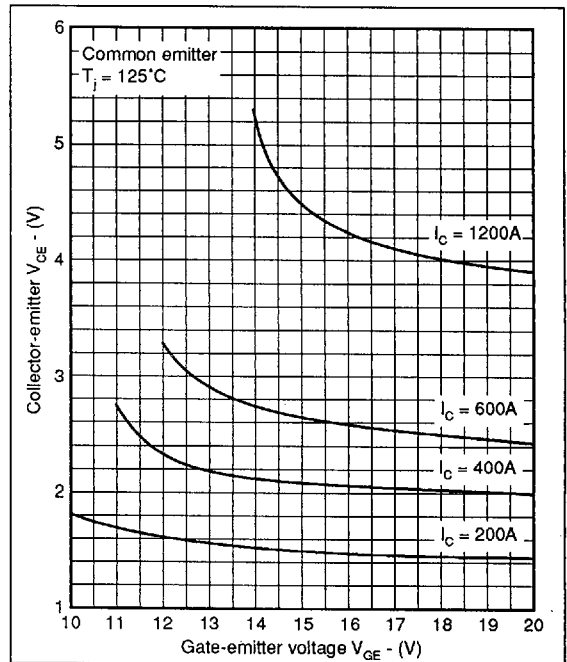


Fig.6 Typical transfer characteristics @ 125°C

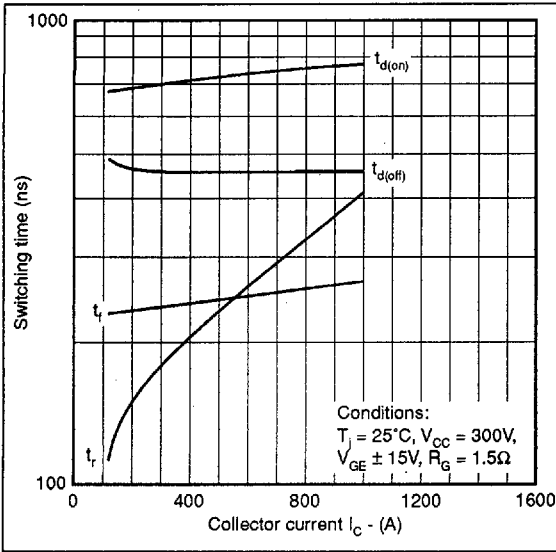


Fig.7 Typical switching time vs I_c @ 25°C

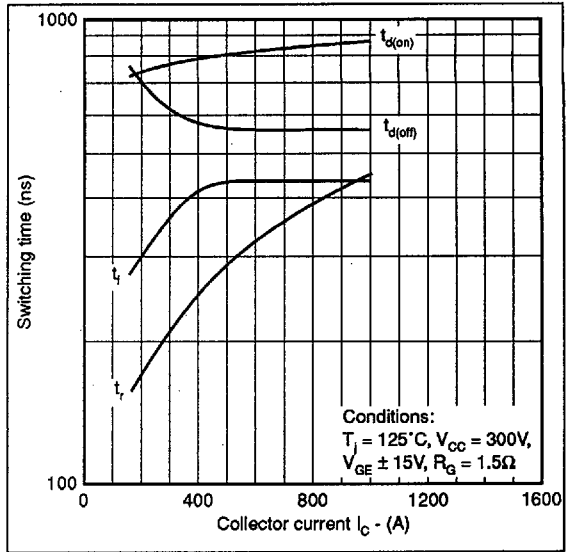


Fig.8 Typical switching time vs I_c @ 125°C

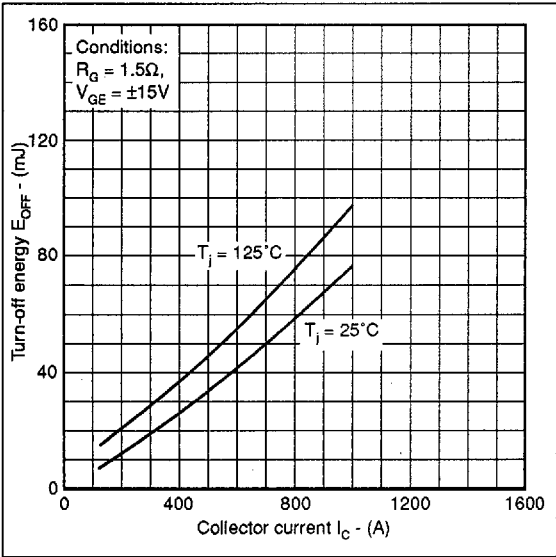


Fig.9 Typical turn-off losses

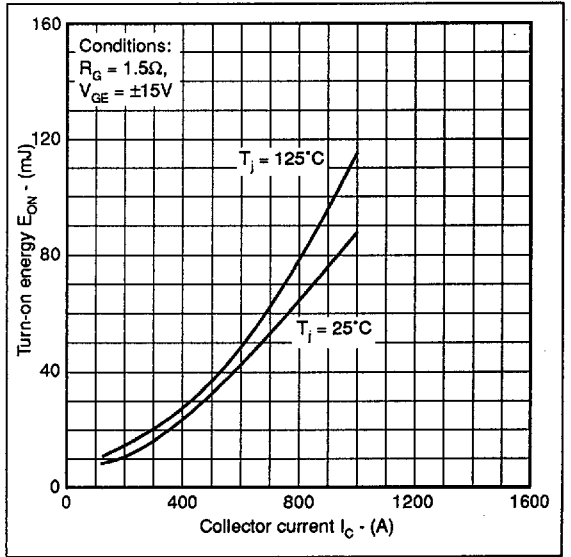


Fig.10 Typical turn-on losses

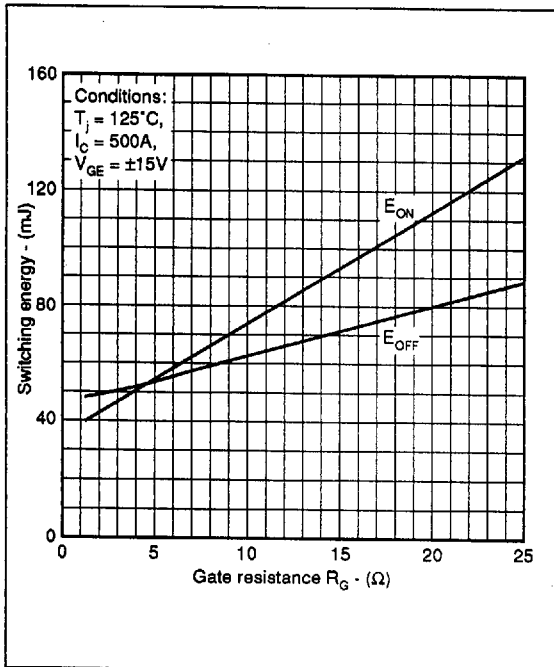


Fig.11 Typical switching energy @125°C

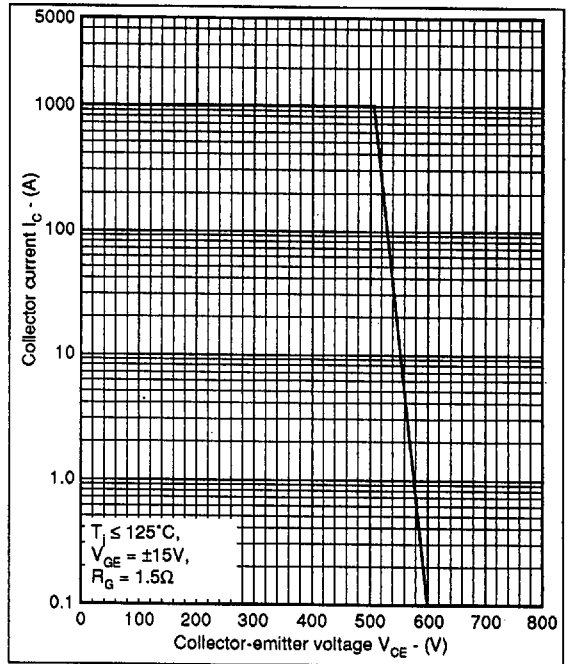


Fig.12 Reverse bias safe operating area

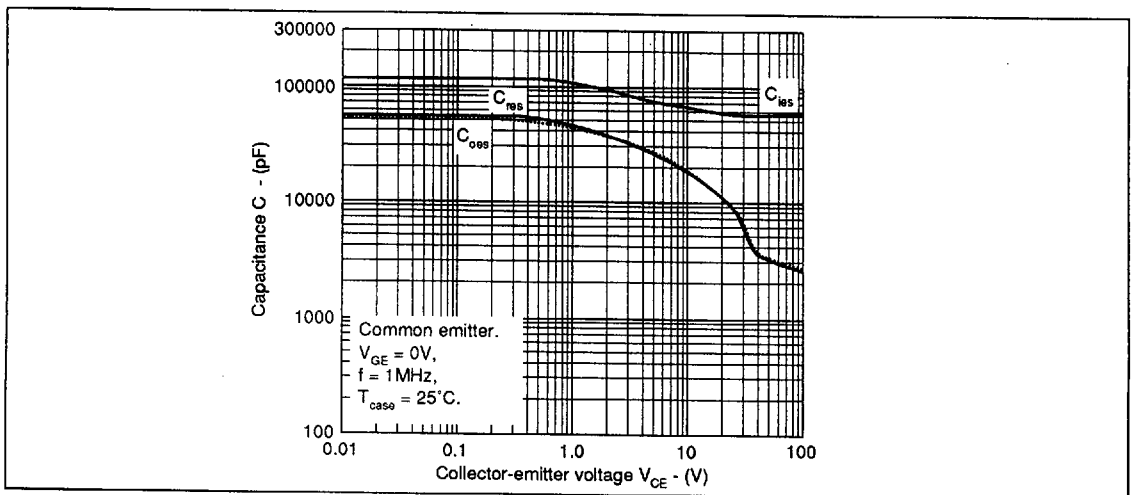


Fig.13 Typical capacitance

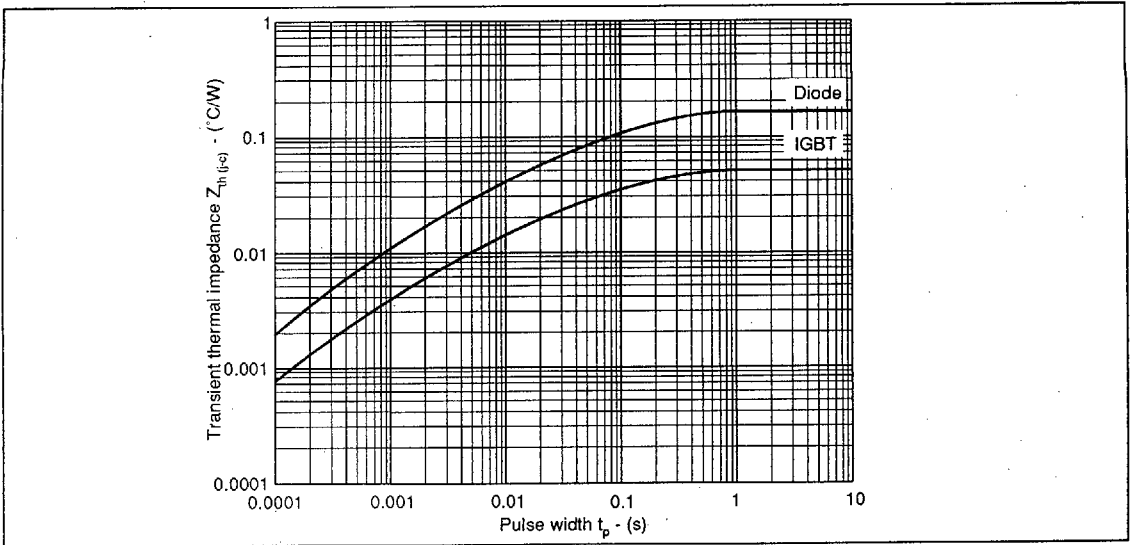


Fig. 14 Transient thermal impedance

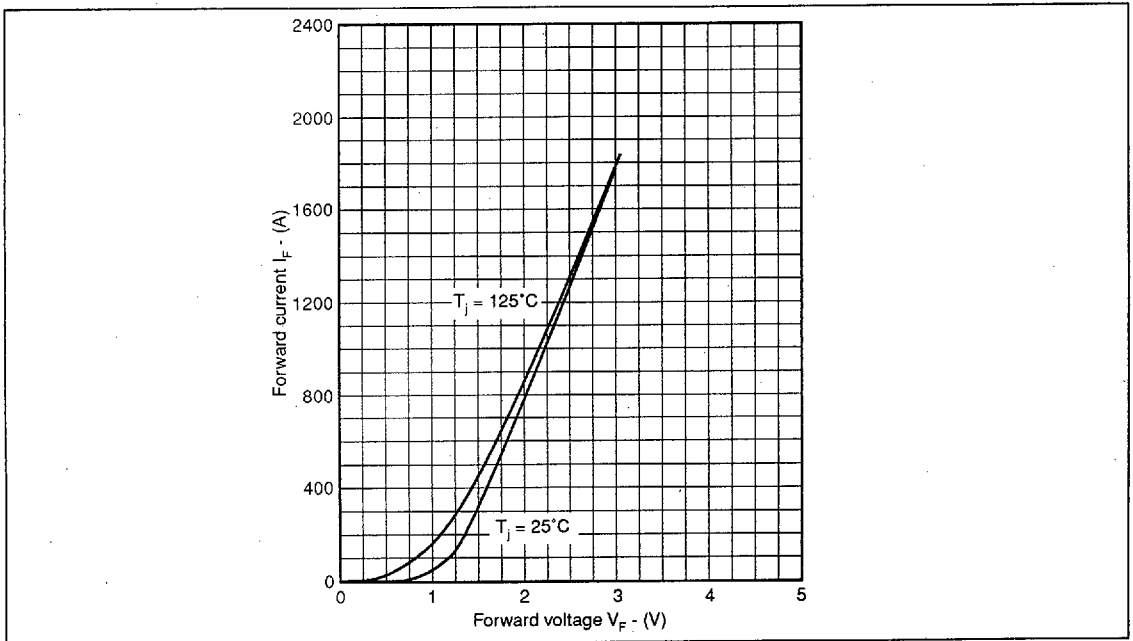
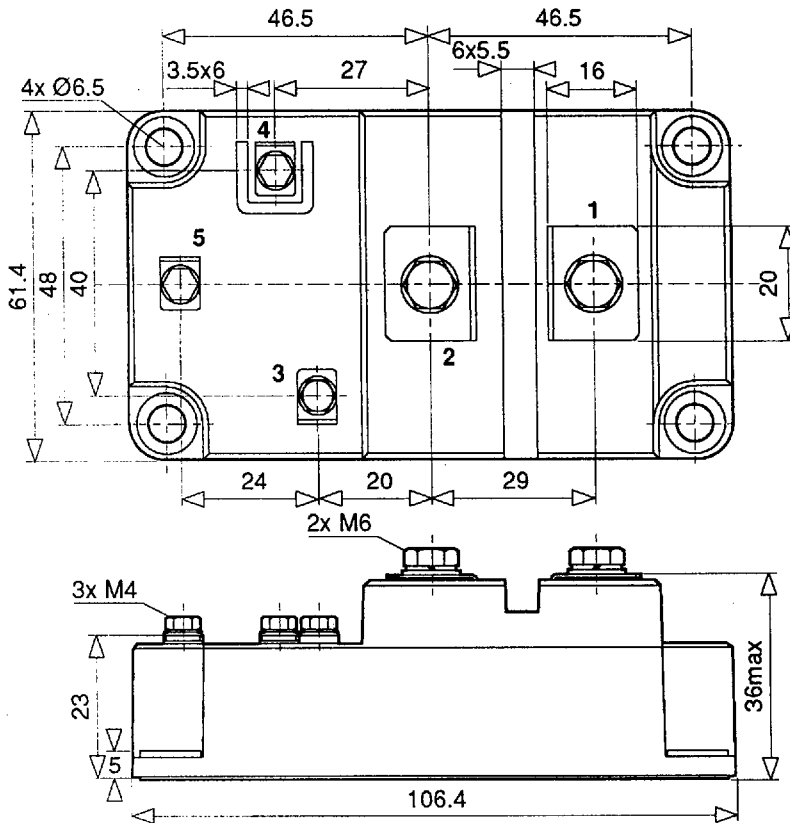
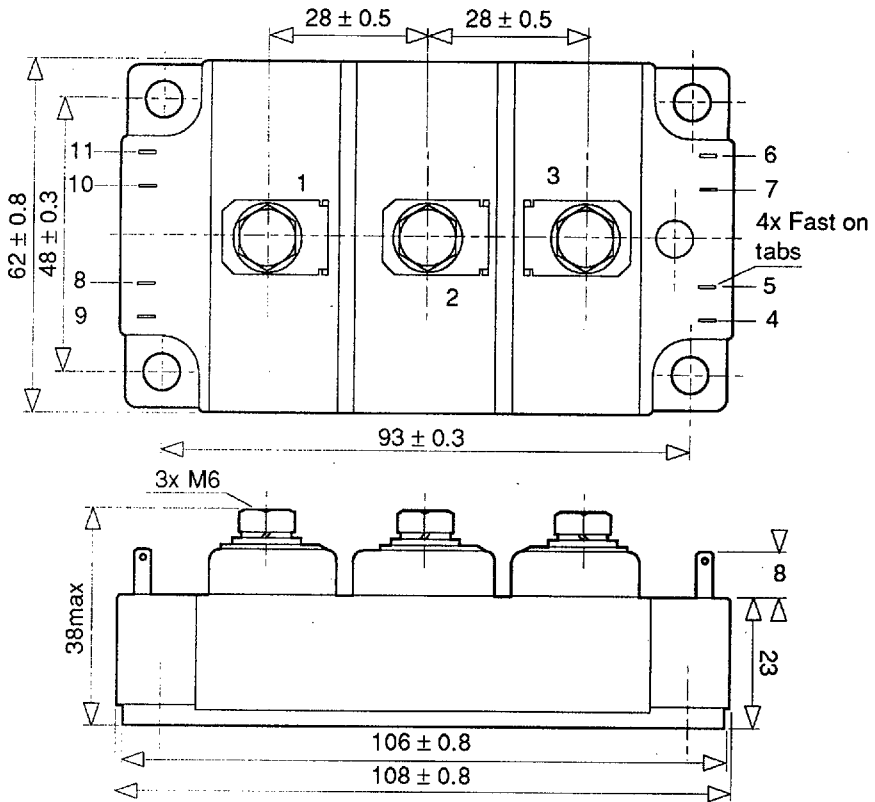


Fig. 15 Typical diode forward characteristics



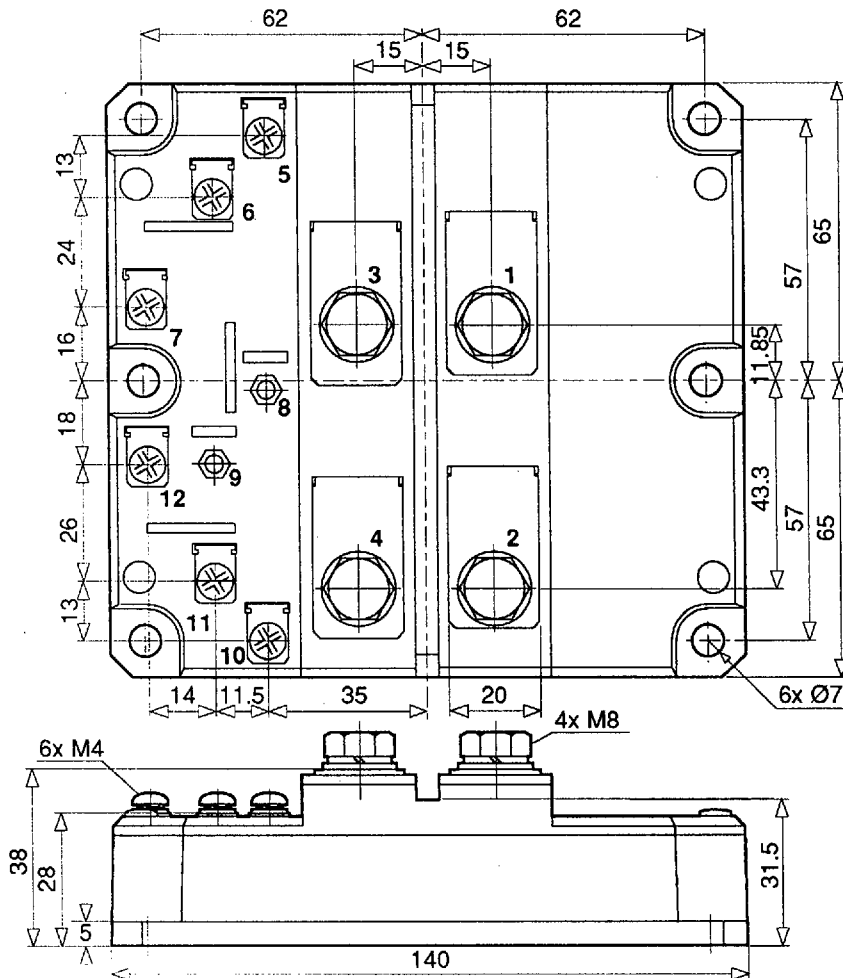
PACKAGE OUTLINE - L

Recommended fixings for mounting:	M6
Recommended mounting torque:	5Nm (44lbs.ins)
Recommended torque for electrical connections (M6):	5Nm (44lbs.ins)
Max. torque for electrical connections (M4):	2Nm (18lbs.ins)
Nominal weight:	265g



PACKAGE OUTLINE - M

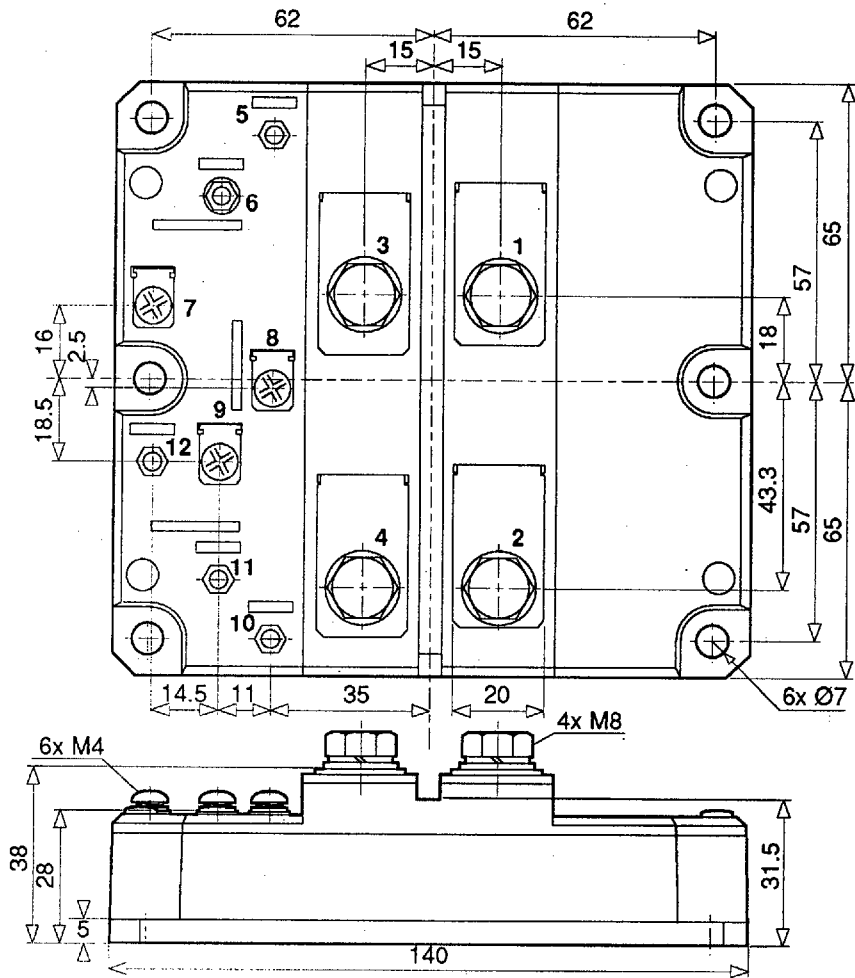
Recommended fixings for mounting:	M6
Recommended mounting torque:	5Nm (44lbs.ins)
Recommended torque for electrical connections (M6):	5Nm (44lbs.ins)
Max. torque for electrical connections:	8Nm (70lbs.ins)
Nominal weight:	265g



PACKAGE OUTLINE - D

Recommended fixings for mounting:	M6
Recommended mounting torque:	5Nm (44lbs.ins)
Recommended torque for electrical connections (M8):	8Nm (70lbs.ins)
Max. torque for electrical connections (M8):	10Nm (88lbs.ins)
Recommended torque for electrical connections (M4):	2Nm (18lbs.ins)

Nominal weight: 1500g



PACKAGE OUTLINE F

- Recommended fixings for mounting: M6
- Recommended mounting torque: 5Nm (44lbs.ins)
- Recommended torque for electrical connections (M8): 8Nm (70lbs.ins)
- Max. torque for electrical connections (M8): 10Nm (88lbs.ins)
- Recommended torque for electrical connections (M4): 2Nm (18lbs.ins)

Nominal weight: 1500g