

SPEC SHEET

MW500-1658F

2725 MHz to 2950 MHz

VOLTAGE CONTROLLED OSCILLATORS



Specifications

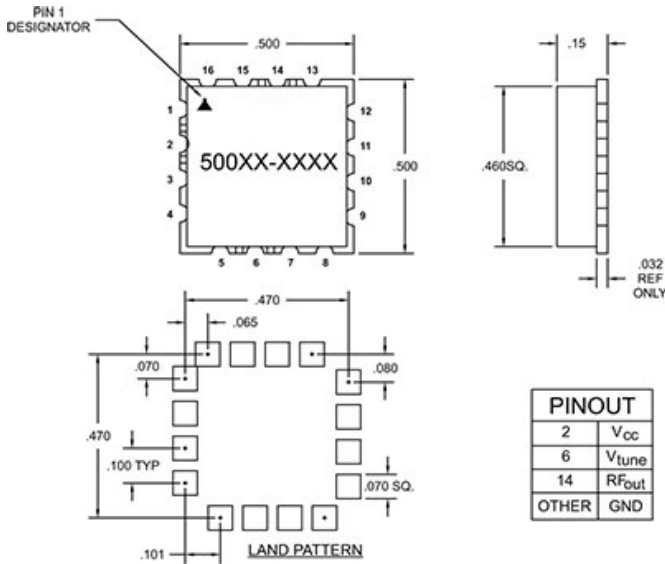
Frequency	2725 MHz to 2950 MHz
Tuning Voltage	1/10 V
Power Output	5 +/- 2.5 dBm
Phase Noise	10 kHz Offset -95 (typ) dBc/Hz 100 kHz Offset -117 (typ) dBc/Hz
Frequency Pushing	3 MHz/V
Frequency Pulling	15 MHz
Harmonic Suppression	-10 (MAX)

Operating Specifications

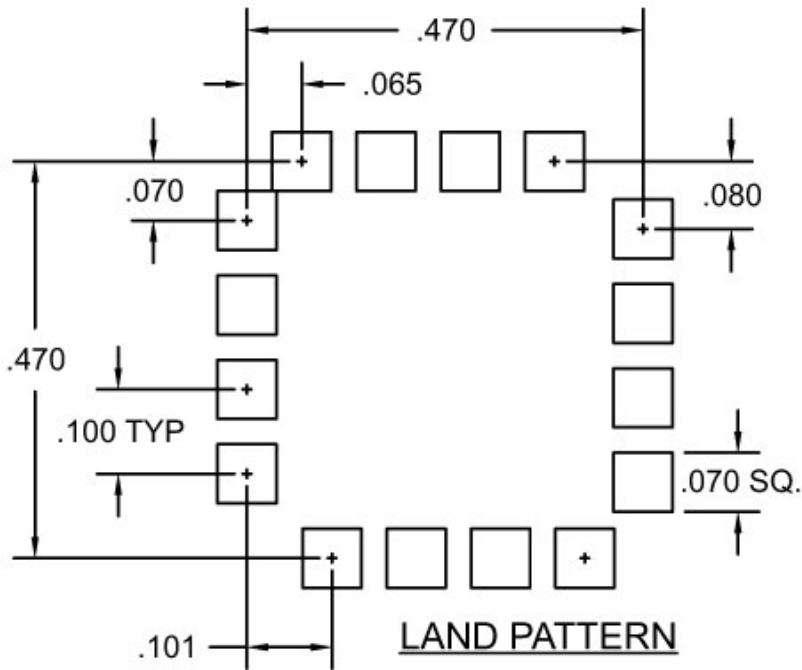
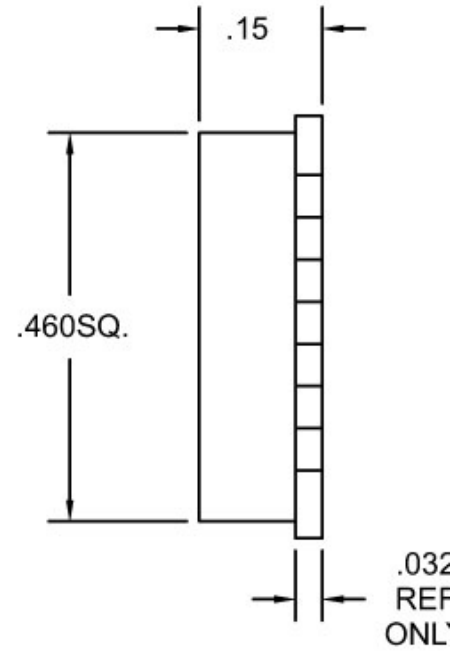
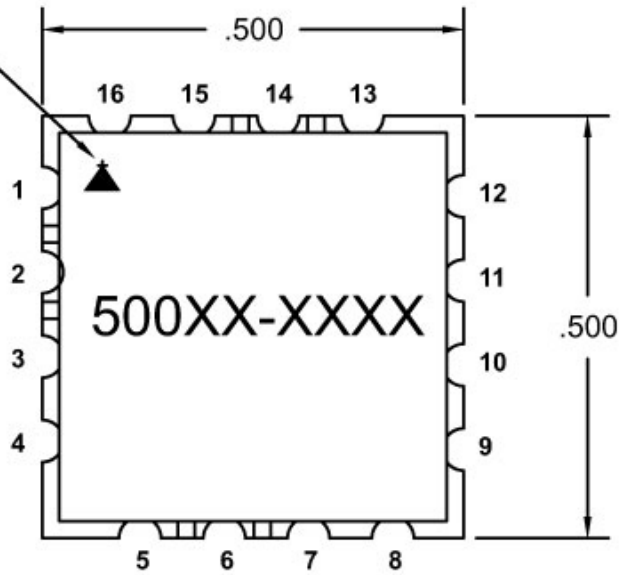
Supply Voltage	8 Vcc
Supply Current	25 mA
Load Impedance	50
Operating Temperature	-40 to 85 °C

Notes

This part is foam filled for vibration.



PIN 1
DESIGNATOR



PINOUT	
2	V_{cc}
6	V_{tune}
14	RF_{out}
OTHER	GND