

MATERIALS AND FINISHES

BODY, COUPLING NUT, REAR BUSHINGS, CLAMP: BRASS  
PLATED NICKEL

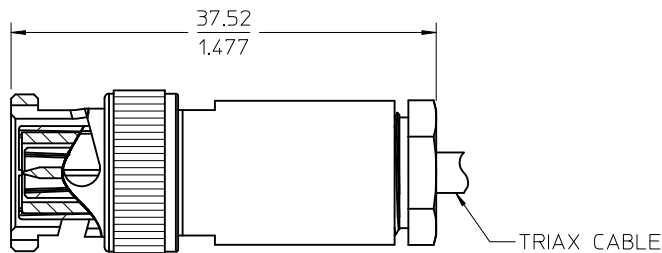
CENTER AND INTERMEDIATE CONTACT, FRONT BUSHING: BRASS  
PLATED GOLD

INSULATORS: TEFLON

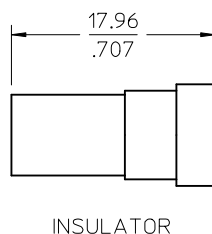
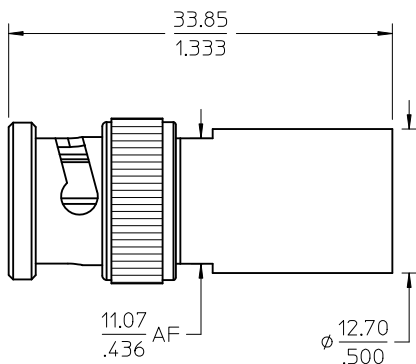
GASKET, O RING: SILICONE RUBBER

ELECTRICAL SPECIFICATION:

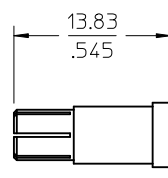
IMPEDANCE: NON-CONSTANT  
INSULATION RESISTANCE:  
>1E14 OHMS CENTER CONDUCTOR  
TO INTERMEDIATE CONDUCTOR  
>1E12 OHMS INTERMEDIATE  
CONDUCTOR TO OUTER CONDUCTOR  
(500V TEST VOLTAGE, 23°C AT 70% RH)  
MAXIMUM CURRENT 1 AMP  
CONTACT RESISTANCE <0.5 OHMS  
WORKING VOLTAGE 600 Vrms  
DWV 750 Vrms



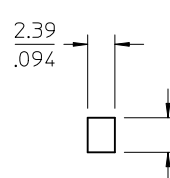
TRIAx PLUG  
INTERFACE



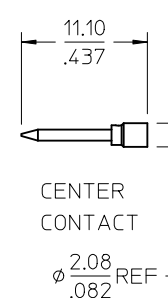
INSULATOR



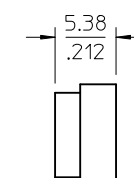
INTERMEDIATE  
CONTACT



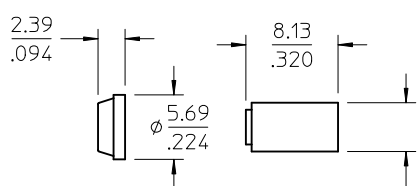
INSULATOR



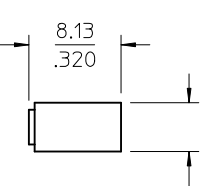
CENTER  
CONTACT



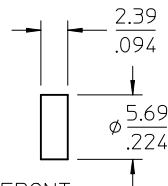
INSULATOR



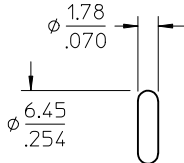
BUSHING



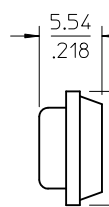
INSULATOR



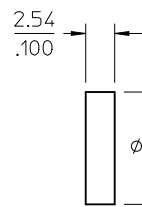
FRONT  
BUSHING



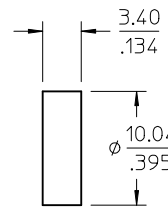
O RING



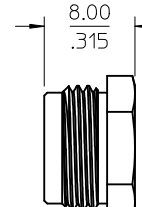
REAR  
BUSHING



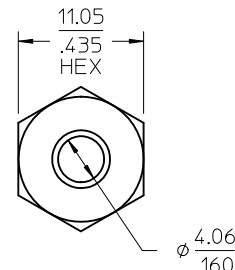
GASKET



REAR  
BUSHING



NUT



4.06  
.160

AS-89678-3900	CABLE ASSY INSTR
MIL-STD-348A, FIG. 201.1	INTERFACE
SPECIFICATION	DESCRIPTION

73415-1831	73415-1830, ONE PER BAG
73415-1830	BULK
PART NO.	PACKAGING

CHG: REDREW IN SD	EC NO: URF-2010-0745	2010/06/22	QUALITY SYMBOLS	GENERAL TOLERANCES (UNLESS SPECIFIED)	DIMENSION STYLE	SCALE	DESIGN UNITS	THIRD ANGLE PROJECTION
	DRWN:SSH AH	2010/06/22		mm	MM/IN	METRIC	☉	
CHKD: DRWN:SSH AH	2010/06/22		▽=0	4 PLACES ± --- ± ---	DRAWN BY	DATE	TITLE	TRIAx PLUG 2 SLOT 1102 CABLE EWR-2467 TRIAx-PC
APPR: JW IENER	2010/06/22		▽=0	3 PLACES ± --- ± ---	CHECKED BY	DATE		
REV	DESCRIPTION			2 PLACES ± --- ± ---	APPROVED BY	DATE		MOLEX INCORPORATED
A				1 PLACE ± --- ± ---	JW IENER	2010/06/22		
				ANGULAR ± 2 °	MATERIAL NO.	DOCUMENT NO.		SD-73415-183
				DRAFT WHERE APPLICABLE MUST REMAIN WITHIN DIMENSIONS	SIZE			SHEET NO. 1 OF 1