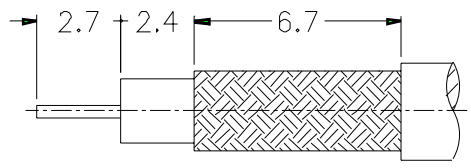
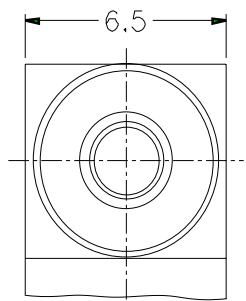


| REVISIONS |      |                              |
|-----------|------|------------------------------|
| ISS       | ZONE | DESCRIPTION\PER REQUEST\DATE |
|           |      |                              |

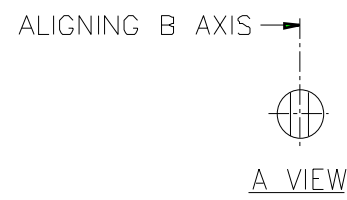
CABLES: - FILOTEX NO ETUDE 276097  
 - TBR/CAB-SP.01  
 - ST 212 (SIRTI TCE2HH2)  
 - PIRELLI SIP CT 1320



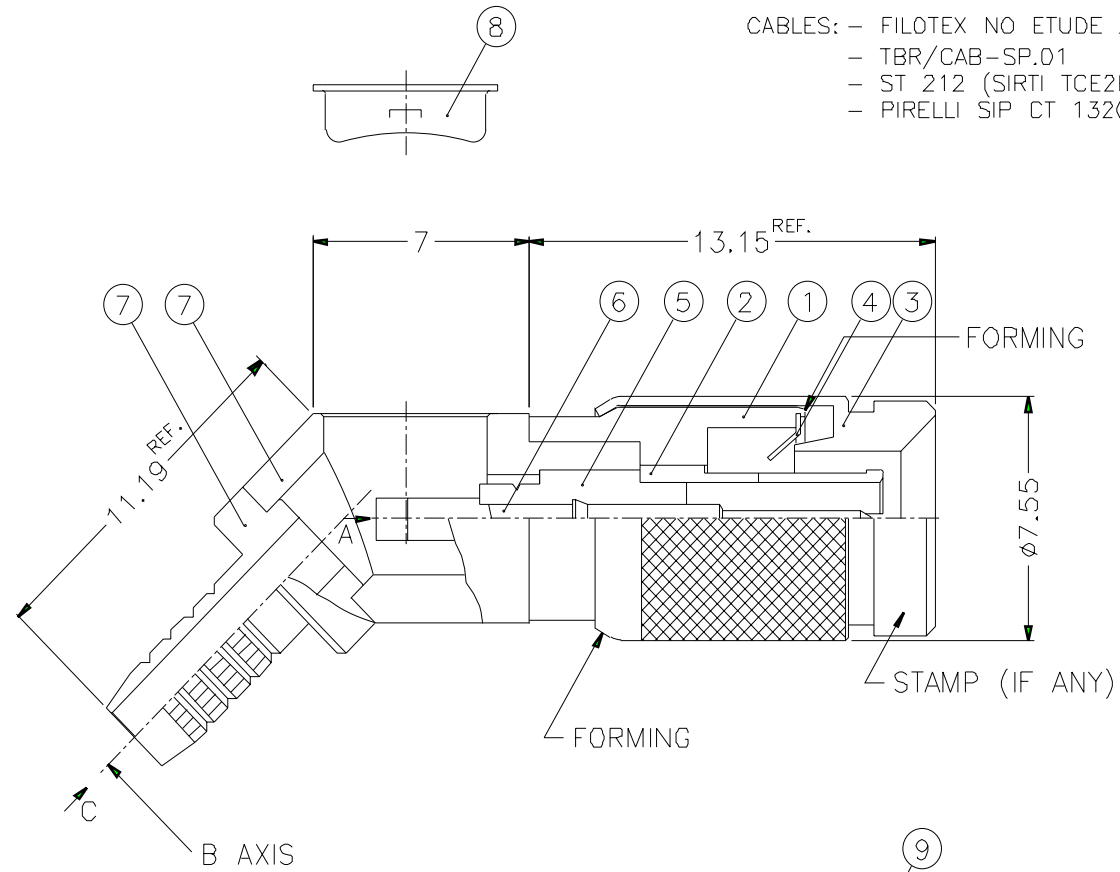
RECOMMENDED  
CABLE STRIPPING DIM'S



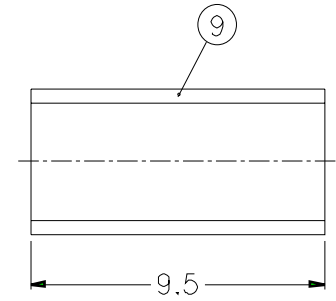
C VIEW



A VIEW



- FERRULE CRIMPING TOOLS P/N  
 227-944 (M22520/5-01)  
 227-1221-19B (M22520/5-19B) HEX: 3.84  
 - INNER CONTACT TO SOLDER



|     |                     |          |         |      |              |
|-----|---------------------|----------|---------|------|--------------|
| 9   | FERRULE             | COPPER   | NICKEL  | 1    | 4K-871-13    |
| 8   | COVER               | BRASS    | NICKEL  | 1    | 4G-731-01    |
| 7   | HOUSING WITH BARREL | BRASS    | NICKEL  | 1    |              |
| 6   | CONTACT PIN         | BRASS    | GOLD    | 1    | 4J-556-03-75 |
| 5   | INSULATOR           | PTFE     | NATURAL | 1    | 4G-727-04-75 |
| 4   | SPRING              | BEUC     | NATURAL | 1    | 123-PLUG-SPR |
| 3   | SHELL               | BRASS    | NICKEL  | 1    | SH10AAC01A   |
| 2   | OUT CONTACT         | BEUC     | GOLD    | 1    | 4G-980-01    |
| 1   | BODY                | BRASS    | NICKEL  | 1    | BD00AGD01A   |
| NO. | DESCRIPTION         | MATERIAL | FINISH  | Q'TY | DRAWING NO.  |

DIMENSIONS ARE IN MILLIMETERS  
 UNLESS OTHERWISE SPECIFIED  
 TOLERANCES  
 0.5-6 = ±0.2  
 6-30 = ±0.4  
 30-120 = ±0.6  
 120-315 = ±1  
 315-1000 = ±1.6  
 1000-2000 = ±2.4

|          |                            |           |
|----------|----------------------------|-----------|
| PART NO. | 1231110L2-E20              |           |
| APPROVED | DATE                       | 08-08-02* |
| CHECKED  | DATE                       | 08-08-02* |
| DRAWN    | DATE                       | 08-08-02* |
| FILE NO. | F:\ND\10\1110\ERC\2B\7F\MN |           |

|                    |                            |
|--------------------|----------------------------|
| <b>Amphenol RF</b> |                            |
| TITLE              | 1.0/2.3 R/A 45° CRIMP PLUG |
| DRAWING NO.        | 101110ERC28MN7F            |
| ITEM NO.           | 101110ERC28MN7F            |