

1 2 3 4 5 6 7 8

REVISIONS		
ISS	ZONE	DESCRIPTION\PER REQUEST\DATE

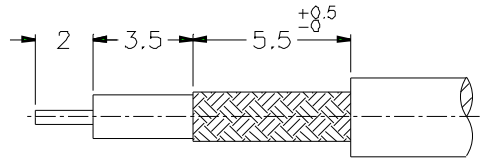
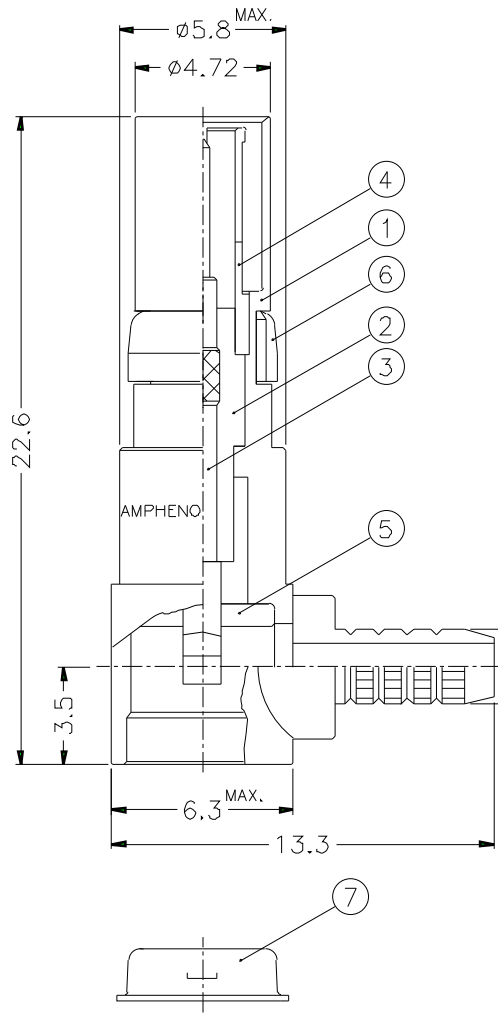
CABLES: RG 174/U
 RG 179 B/U
 KX 3 B
 KX 22 A
 L 910 22

- FERRULE CRIMPING TOOLS P/N
 227-944 (M22520/5.01)
 227-1221-03A (M22520/5.03) HEX: 3.25 L=8.25

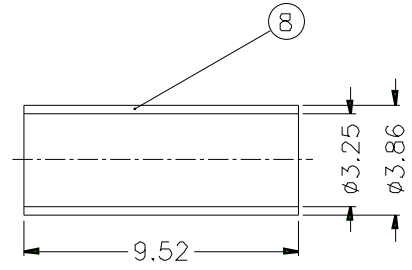
- CONNECTOR ADAPTED IN MOLDING PARTS OF
 DIN 41 612 TYPE M

- CONNECTOR ACCORDING TO DIN 41-626

- PACKAGING IN BAG WITH COMMERCIAL PART NUMBER
 AND DATE CODE



RECOMMENDED
 CABLE STRIPPING DIM'S



8	FERRULE	COPPER	NICKEL	1	
7	COVER	BRASS	NICKEL	1	
6	RETAINER RING	BECU	NICKEL	1	
5	INSULATOR	TEFLON	NATURAL	1	
4	OUT CONTACT	BECU	GOLD	1	
3	CONTACT PIN	BRASS	GOLD	1	
2	INSULATOR	TEFLON	NATURAL	1	
1	BODY WITH BARREL	BRASS	NICKEL	1	
NO.	DESCRIPTION	MATERIAL	FINISH	Q'TY	DRAWING NO.

DIMENSIONS ARE IN MILLIMETERS

PART NO.	102 513 06	
APPROVED	DATE	10-11-01'
CHECKED	DATE	10-11-01'
DRAWN	DATE	10-11-01'
FILE NO.		

Amphenol	
TITLE	1.0/2.3 R/A CRIMP PLUG
DRAWING NO.	
ITEM NO.	

1 2 3 4 5 6 7 8

F
E
D
C
B
A

F
E
D
C
B
A