

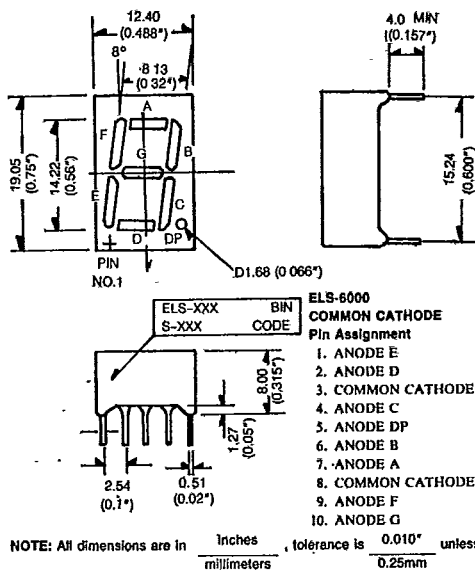
## ELS-6000 SERIES

Single Digit LED Display(0.56inch)

### MAIN FEATURES:

- \* INDUSTRIAL STANDARD SIZE.
- \* 0.56 INCH HIGH CHARACTER.
- \* EXCELLENT CHARACTER APPEARANCE.
- \* COMMON CATHODE OR COMMON ANODE.
- \* CATEGORIZED FOR LUMINOUS INTENSITY.

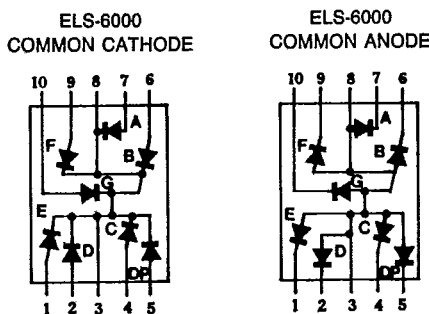
### Package Dimensions:



### DESCRIPTION:

The ELS-6000 series are large 14.22mm high seven segment displays designed for viewing distances up to 7 meters. These displays provide excellent readability in bright ambient light. Red ones get red segments and black surface, bright red ones get white segments and black surface; green ones have white segments and grey surface; hi-efficiency red ones have red segments and red surface while orange ones have white segments and grey surface.

### INTERNAL CIRCUIT DIAGRAM



### ABSOLUTE MAXIMUM RATINGS: (Ta = 25°C)

Reverse Voltage	: 5 Volt
Reverse Current (Vr = 5V)	: 10µA
Operating Temperature Range	: -40°C To 85°C
Storage Temperature Range	: -40°C To 100°C
Lead Soldering Temperature [1.6 mm (0.063 inch) From Body]	: 260°C For 5 Seconds

Parameter Description	Symbol	Unit
Spectral Line Half-Width	Δλ	nm
Power Dissipation	Pd	mW
Peak Forward Current (Duty 1/10, @ 1 KHz)	If (Peak)	mA
Recommended Operating Current	If (Rec)	mA
Average Luminous Intensity *1.2 (If = 10mA)	Iv	µcd
Luminous Intensity Matching Ratio	Iv-m	
Forward Voltage (If = 20mA)	Vf	V

### PART SELECTION AND APPLICATION INFORMATION (RATINGS AT 25°C AMBIENT)

New Model No.	Old Model No.	Chip		C.C. or C.A.	Peak Wave Length λP (nm)	Absolute Maximum Ratings				Electro-Optical Characteristics					Iv-m	Remark	
		Material	Emitted Color			Δλ	Pd	If	If (Peak)	Vf (V)			If (Rec)	Iv (µcd)			
										Min.	Typ.	Max.			Min.	Typ.	
ELS-6780R	S511RDB	GaAsP	Red	Common Cathode	655	40	110	40	200	1.5	1.7	2.0	10~20	200	500	2:1	**
ELS-6780P	S511HWB	GaP	Bright Red		697	90	45	15	50	1.7	2.1	2.8	5~10	300	700	2:1	**
ELS-6980HR	S511IDR	GaAsP/GaP	Hi-Eff Red		635	45	100	30	160	1.7	2.0	2.8	10~20	900	2200	2:1	**
ELS-6480G	S511GWA	GaP	Green		565	30	100	30	160	1.7	2.1	2.8	10~20	800	2000	2:1	*
ELS-6680E	S511EWA	GaAsP/GaP	Orange		635	45	100	30	160	1.7	2.0	2.8	10~20	800	2000	2:1	*
ELS-6760R	S512RDB	GaAsP	Red	Common Anode	655	40	110	40	200	1.5	1.7	2.0	10~20	200	500	2:1	**
ELS-6760P	S512HWB	GaP	Bright Red		697	90	45	15	50	1.7	2.1	2.8	5~10	300	700	2:1	*
ELS-6960HR	S512IDR	GaAsP/GaP	Hi-Eff Red		635	45	100	30	160	1.7	2.0	2.8	10~20	900	2200	2:1	*
ELS-6460G	S512GWA	GaP	Green		565	30	100	30	160	1.7	2.1	2.8	10~20	800	2000	2:1	*
ELS-6660E	S512EWA	GaAsP/GaP	Orange		635	45	100	30	160	1.7	2.0	2.8	10~20	800	2000	2:1	*

- NOTES: 1. The average luminous intensity is obtained by summing the luminous intensity of each segment and dividing by the total number of segments. The displays are categorized for luminous intensity with the intensity category designated by a letter located on the side of the package.  
 2. Luminous intensity is measured with a light sensor and filter combination that approximates the CIE (International Commission on Illumination) eye-response curve.  
 3. Clean only in water, isopropanol, ethanol, Freon TF (or equivalent).

Remark: \*\* The most popular types \* Common types The rest are special types