

DRAWING MADE IN AMERICAN PROJECTION

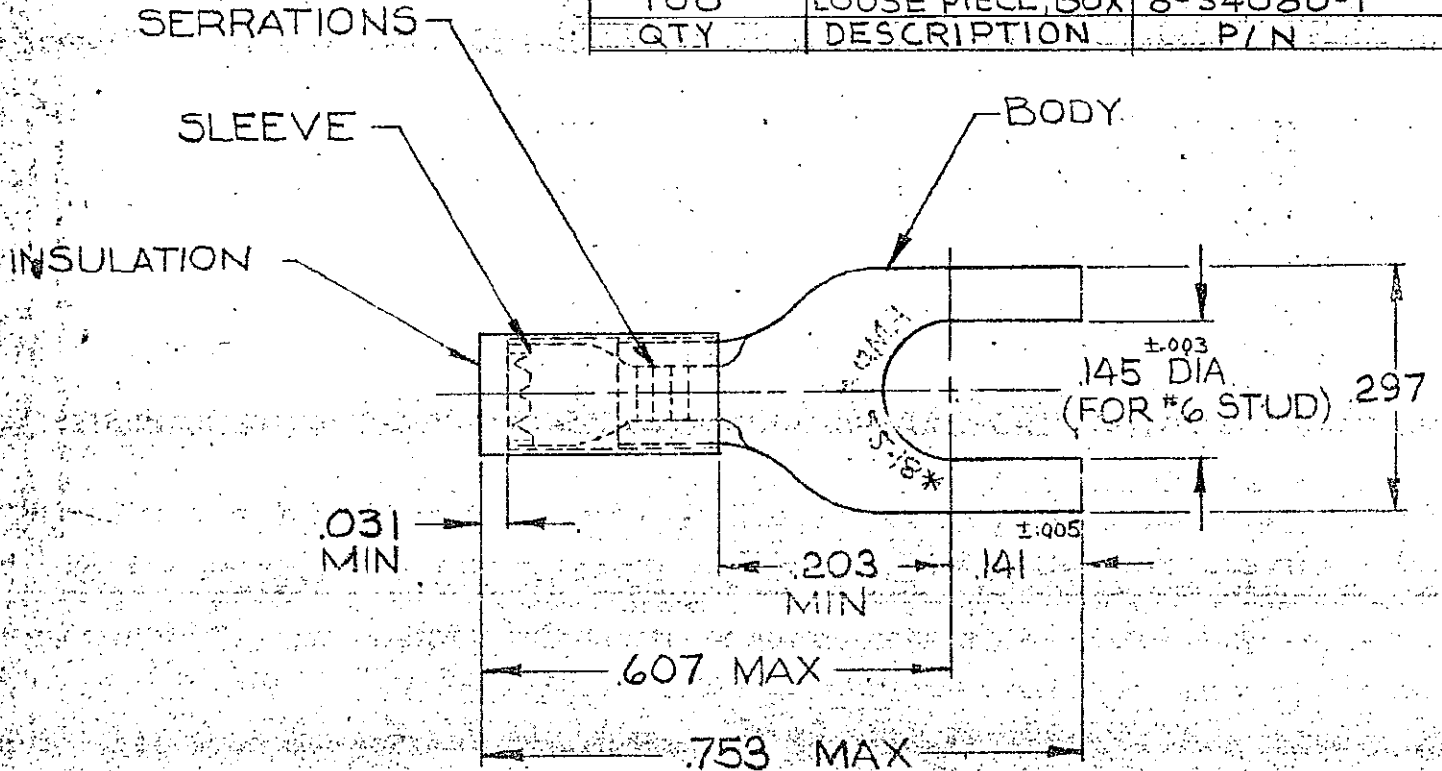
LOC PRINT DIST
G 14 C

© 1954 BY AMP INCORPORATED. ALL RIGHTS RESERVED. AMP PRODUCTS COVERED BY PATENTS AND/OR PATENTS PENDING.

REVISIONS

LTR	DESCRIPTION	DATE	APPROVED
G	REV-0G10-0094-98	2-3-99	MLE/JT
E	REV/G--0211-92	LO 11/92	ml
F	REV/OL20-0159-96	ME 12-12-96	BB

QTY	DESCRIPTION	P/N
100	LOOSE PIECE, BOX	8-34080-1

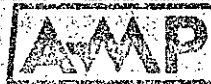


FOR .080 TO .125 WIRE INSULATION DIA
MARKING 22-18 FOR MILITARY
COMMERCIAL RANGE 22-16

QTY	DESCRIPTION	PART NO	MATERIAL & FINISH
1	34080 ON TAPE	2-34080-1	BODY: COPPER (ASTM B152) TIN PL (ASTM B545)
1	WIRE TERMINAL	34080	SLEEVE: COPPER (ASTM B152) TIN PL (ASTM B545) INSULATION: NYLON COLORED-RED

UNLESS OTHERWISE SPECIFIED DIMENSIONS ARE IN INCHES
TOLERANCES ON:
DECIMALS ±.000
ANGLES ± 5°

CONTRACT NO.	
DR.	Wayne millhins 12-5-69
CHK	[Signature] 12-22-69
APPD	[Signature] 12-29-69
REL	[Signature] 12-31-69
DSGN APPD	[Signature]
OTHER APPD	



AMP INCORPORATED
HARRISBURG, PENNSYLVANIA

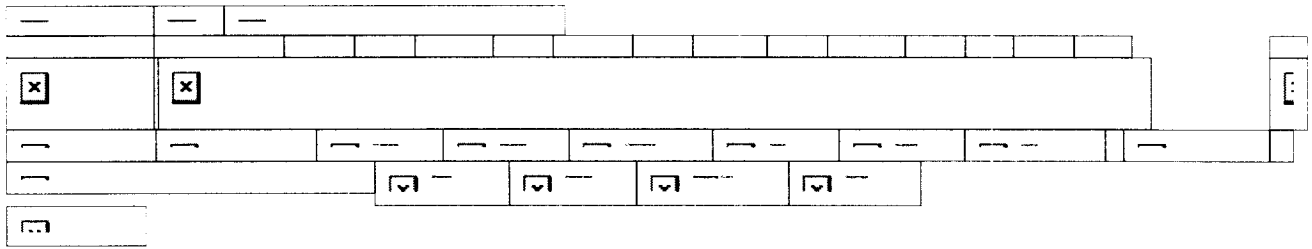
NAME WIRE TERMINAL
PIDG™ - SPADE
WIRE SIZE: 22-16

SEE TABLE

SIZE	CODE IDENT NO.	NUMBER
A	00779	34080

SCALE NTS

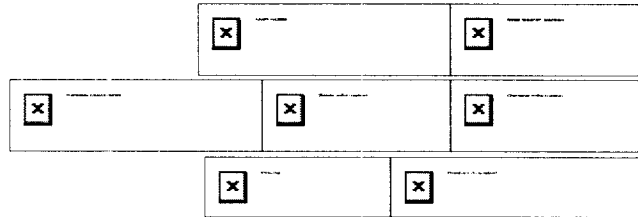
SHEET NO. 1 OF 1



- Part Number Search
- Alphabetical Search
- Product Type Search
- Product Family Search
- Picture Search
- Industry Product Search
- Competitor Cross Reference
- Document Number Search
- Help/Glossary

Terminals and Splices Ring and Spade Tongue Terminals

2-34080-1 -- 1 of 1 products Active



Please use the customer drawing for all design activity.

- **Customer Drawing: 34080, Rev. F**
Document Title: WIRE TERMINAL PIDG - SPADE
 194954.pdf (104K)

*Please use the customer drawing for all design activity.
The photographs and/or line drawings below are
representative images of a product for viewing purposes
only.*

Product Photo

Searchable Features:

Terminal Shape:	Spade Tongue
Body Style:	PIDG
Receptacle Style:	Straight
Barrel Type:	Closed Barrel
Wire/Cable Type:	Regular Wire
Wire Range (mm [AWG]):	0.26-1.65² [22-16]
Wire Range (CMA):	509-3,260
Insulation:	Yes
Insulation Support:	Insulation Support
Insulation Diameter (mm)	3.18 [.125] Max

Other Properties:

Voltage:	300V Max.
Tongue Material Thickness (mm [in]):	0.84 [.033] Max.
Color:	Red
Insulation Material:	Nylon
Comment:	Metal Ramped Nut, Zinc

[in]):	max.
Stud Size:	6 [M3.5]
Stud Diameter (mm [in]):	3.51 [.138]
Shape:	SPADE-020
Heavy Duty:	Standard
Packaging Method:	Tape Mounted
Material:	Copper
Finish:	Tin
Industry Application:	Standard

[Copyright and Privacy Statement Tyco Electronics Corporation](#)
Visit [Tyco International, Ltd.](#)

[\[back to top\]](#)

[Products](#) | [Industries](#) | [Commerce](#) | [About](#) | [Support](#) | [Home](#)