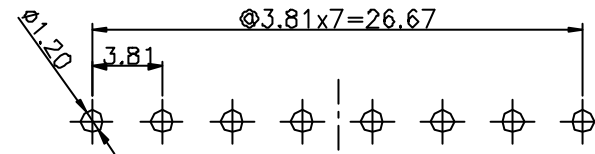
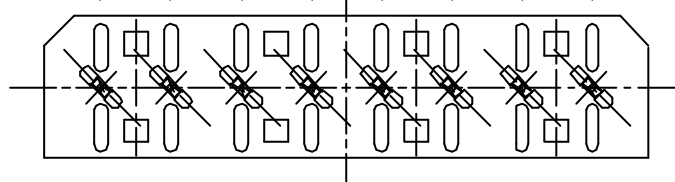
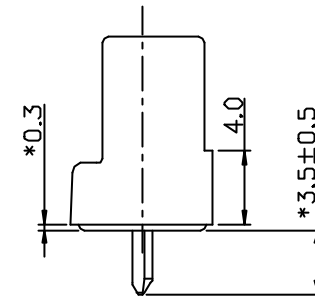
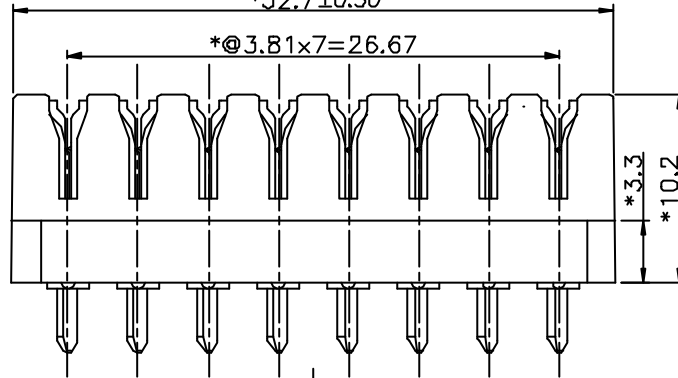
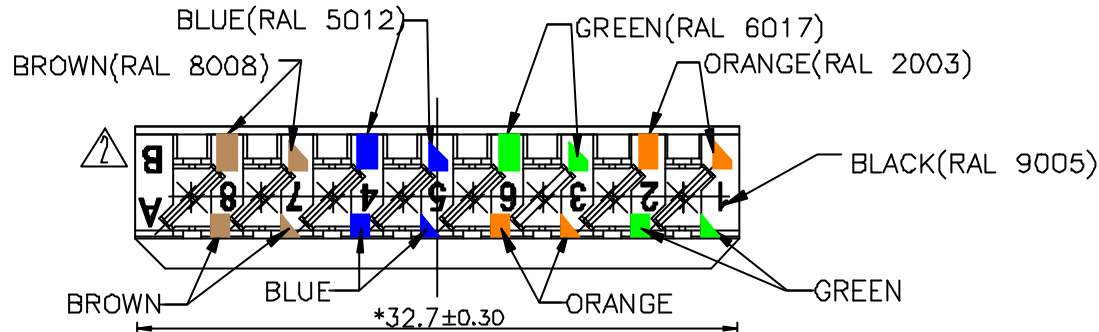


REVISION RECORD				
REV	ECO	DESCRIPTION	DRFT	CHKD
△		Design change	5/24/03	
△		Design change	ZY	03/24/03



PC Board Layout
Component Side Shown

- Housing : PC
- Contact : Phosphor Bronze with Tin plating
- Wire : cable sizes :
Solid copper wires up to 0.4mm - 0.8mm in dia.
Insulation :
PE or PVC insulated wire (100% PE/foam skin, filled/unfilled)
up to 1.4mm in diameter
- Contact resistance : 10 Milliohms Max.
- Voltage Rating : 250 VDC
- Operating Temperature : -20°C to +80°C and Humidity up to 95%
- Insulation Resistance : 500 VDC, voltage applied 5000 Megohms Min.
- Dielectric Strength : AC 2000 Vrms

PART NUMBER(FOR AA): 15814DH
PART NUMBER(FOR FRE). : E4808-9S0Y1A △

MIN (INCH) TOLERANCES EXCEPT AS NOTED		DFTO ZY CHKD ZLJ MFD	DATE 8/28/02 DATE 2003/05/06 DATE	FULL RISE ELECTRONIC CO., LTD	
MM .0 ±0.20 .00 ±0.15 .000 ±0.075	± ± ±	APPM SHY DATE 2003/08/08	TITLE IDC TERMINAL BLOCK 8P (BOTTOM CLOSURE)		
ANGLES ±	QTY :	FINISH :	DRAWING NO. GE483037 /PART NO. SEE NOTE	SIZE A3	REV 2
THIRD ANGLE PROJECTION	SCALE	DO NOT SCALE DRAWING	SHEET X OF Y		