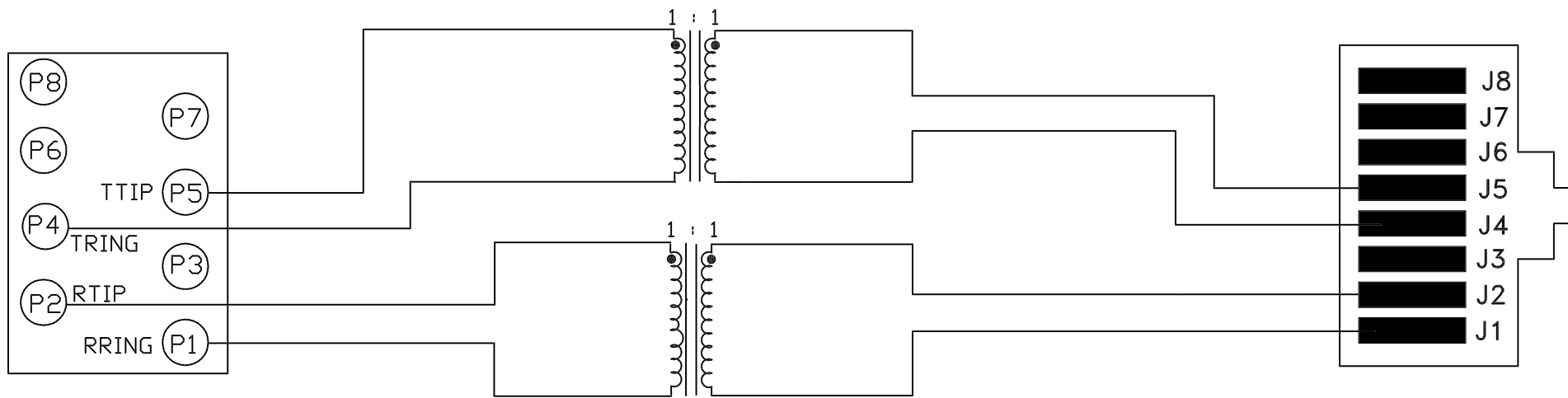


TOP VIEW



ELECTRICAL SPECIFICATIONS:

- | | |
|---|--|
| <p>1.0 TURNS RATIO (P2-P1) ; (J2-J1)
 (P5-P4) ; (J5-J4)</p> <p>2.0 INDUCTANCE (P2-P1) ; (P5-P4)</p> <p>3.0 LEAKAGE INDUCTANCE P2-P1 (WITH J2 AND J1 SHORT)
 P5-P4 (WITH J5 AND J4 SHORT)</p> <p>4.0 INTERWINDING CAPACITANCE (P2,P1) TO (J2,J1)
 (P5,P4) TO (J5,J4)</p> <p>5.0 HIPOT (P5-P4) TO (J5-J4)
 (P2-P1) TO (J2-J1)</p> <p>6.0 RETURN LOSS : (J1-J2 & J4-J5) 100 OHM REF.
 860KHz TO 1.72MHz
 1.72MHz TO 34.4MHz
 34.4MHz TO 51.6MHz</p> <p>NOTE ; 100 OHMS CONNECTED TO PINS P1-P2 & P5-P4.</p> <p>7.0 DC RESISTANCE (P5-P4) ; (P2-P1)</p> | <p>: 1 : 1 ± 3%</p> <p>: 1 : 1 ± 3%</p> <p>: 40uH MIN. @ 0.05V, 10KHz</p> <p>: 0.5uH MAX. @ 1MHz</p> <p>: 0.5uH MAX. @ 1MHz</p> <p>: 10pf MAX @ 1MHz</p> <p>: 10pf MAX. @ 1MHz</p> <p>: 1500VAC</p> <p>: 1500VAC</p> <p>: 12dB MIN</p> <p>: 18dB MIN</p> <p>: 14dB MIN</p> <p>: .3 ohms Max.</p> |
|---|--|

NOTES

1.0 PINS WITHOUT ELECTRICAL CONNECTION ARE OMITTED.

InNet Technologies Inc.

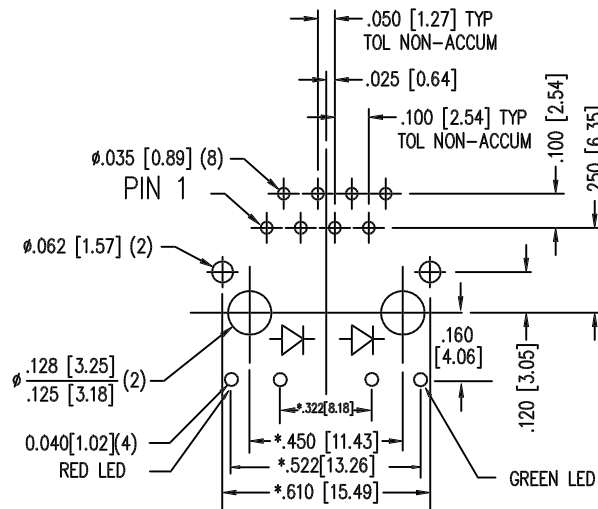
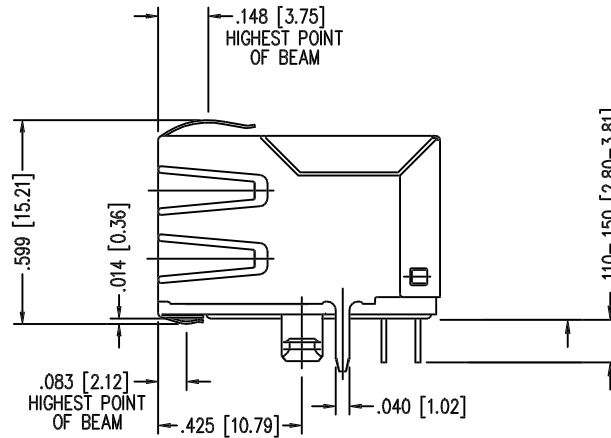
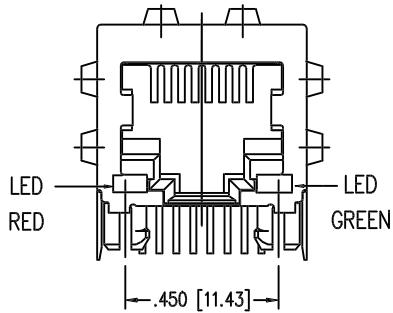
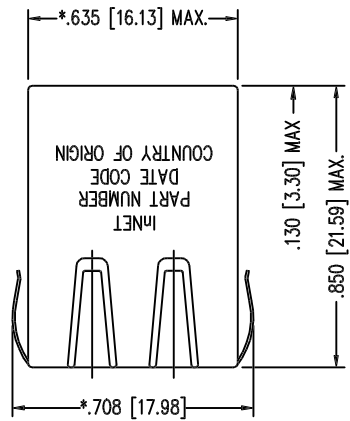
<http://www.innet-tech.com>

Stewart Connector Systems

<http://www.stewartconnector.com>

SHEET
2 OF 3

DRAWING NO. SI-40241 REV. X



P.C.B. RECOMMENDED HOLE LAYOUT
SEEN FROM COMPONENT SIDE
TOLERANCE ±.003 [0.08] UNLESS OTHERWISE SPECIFIED

NOTES:

- TOLERANCES COMPLY WITH F.C.C. DIMENSION REQUIREMENTS
- DIMENSIONS SHOWN WITH "*" TO BE CENTRAL ABOUT CENTER LINE
- DIMENSIONS SHOWN ARE SUBJECT TO CHANGE WITHOUT NOTICE.
- PIN NOT ELECTRICALLY CONNECTED MAYBE OMITTED. SEE ELECTRICAL DRAWING FOR OMITTED PINS.

AVAILABLE WITH:

- STANDARD 50 MICRO-INCH SELECTIVE GOLD PLATING

LED SPECIFICATIONS

	GREEN	RED
- COLOR:	GREEN	RED
- FORWARD VOLTAGE(20mA) :	2.5v (MAX)	2.5V (MAX)
- FORWARD VOLTAGE(20mA) :	2.1V (TYP)	2.0V (TYP)
- POWER DISSIPATION :	105mW	105mW
- WAVE LENGTH:	590nm	625nm
- LUMINOUS INTENSITY (10mA) :	2-8 MCD	3.2-20 MCD

InNet Technologies Inc.

<http://www.innet-tech.com>

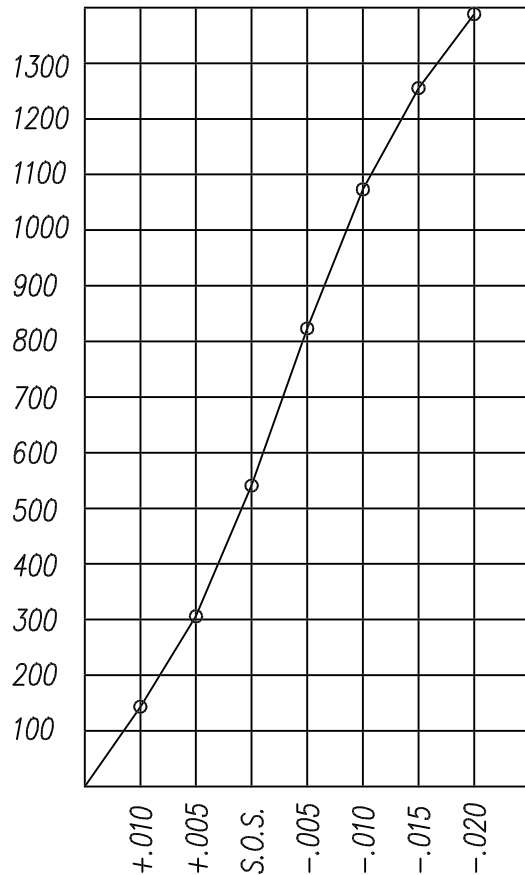
Stewart Connector Systems

<http://www.stewartconnector.com>

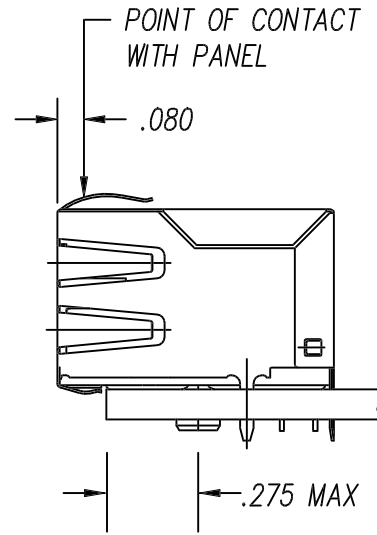
SHEET
2 of 3

DRAWING NO. SI-40241

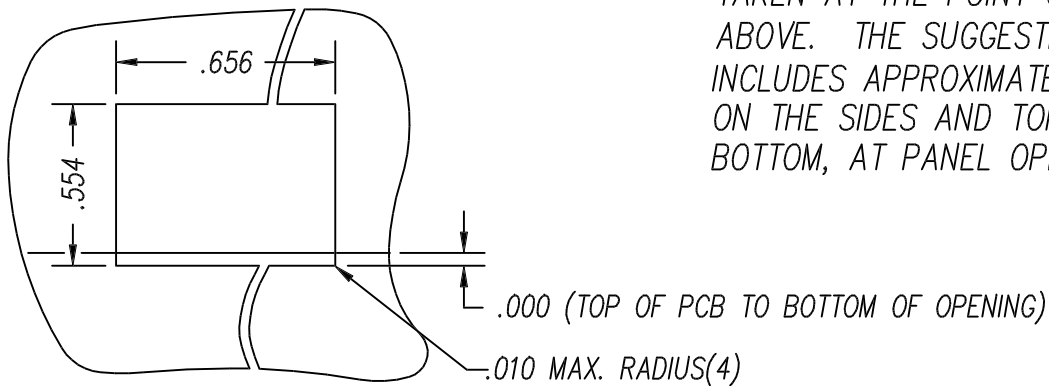
REV. X



PANEL GROUNDING BEAM DEFLECTION
S.O.S. = SUGGESTED OPENING SIZE



THE SUGGESTED PANEL OPENING IS INTENDED TO GIVE THE USER THE ABILITY TO HAVE REASONABLE JACK / PANEL CLEARANCES YET MAINTAIN RELIABLE GROUNDING CAPABILITY. THESE VARIABLES CAN BE ADJUSTED IN EITHER DIRECTION BUT MAY CARRY SOME CONSEQUENCES IN THE FORM OF LOWER MATING FORCES OR TIGHTER ASSEMBLY TOLERANCES. FORCE VALUES ON THE GRAPH ARE GENERAL AVERAGES TAKEN AT THE POINT OF CONTACT SHOWN ABOVE. THE SUGGESTED PANEL OPENING INCLUDES APPROXIMATELY .020 CLEARANCE ON THE SIDES AND TOP AND .013 ON THE BOTTOM, AT PANEL OPENING.



SUGGESTED PANEL OPENING

InNet Technologies Inc.
<http://www.innet-tech.com>
 Stewart Connector Systems
<http://www.stewartconnector.com>