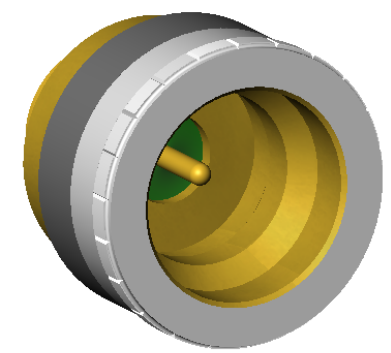
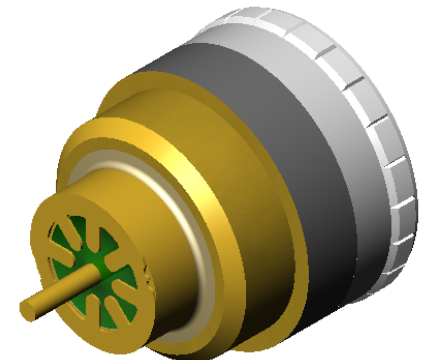
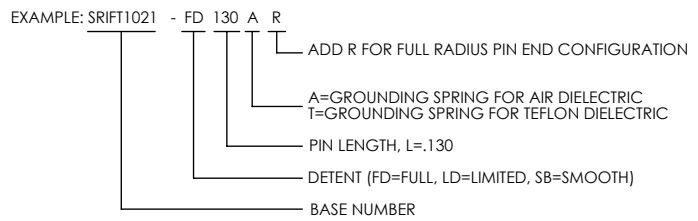


# ALUMINUM COMPATIBLE LASER WELDABLE 50 OHM FEEDTHROUGH SMP ADAPTABLE, .015 DIAMETER CENTER CONTACT, PRESS-IN

REVISIONS			
REV	DCN	REV DATE	RELEASE APPROVAL
-	INIT RLSE	2011-06-28	J. PETRI
A	DCN001209	2013-10-15	

- CONFIGURATION FOR INTERFACING TO SMP "BULLET" STYLE ADAPTER
- DESIGNED TO LASER WELD INTO AN ELECTRONIC CHASSIS WALL
- INDUSTRY STANDARD NICKEL-IRON-COBALT ALLOY CONTACT WITH CORNING 7070 EQUIVALENT GLASS
- INTEGRAL RF GROUNDING TAB FOR EXCELLENT PERFORMANCE OVER TEMPERATURE
- DROP-IN HIGHER PERFORMANCE REPLACEMENT FOR SRIFT1001 STYLE CONNECTORS.

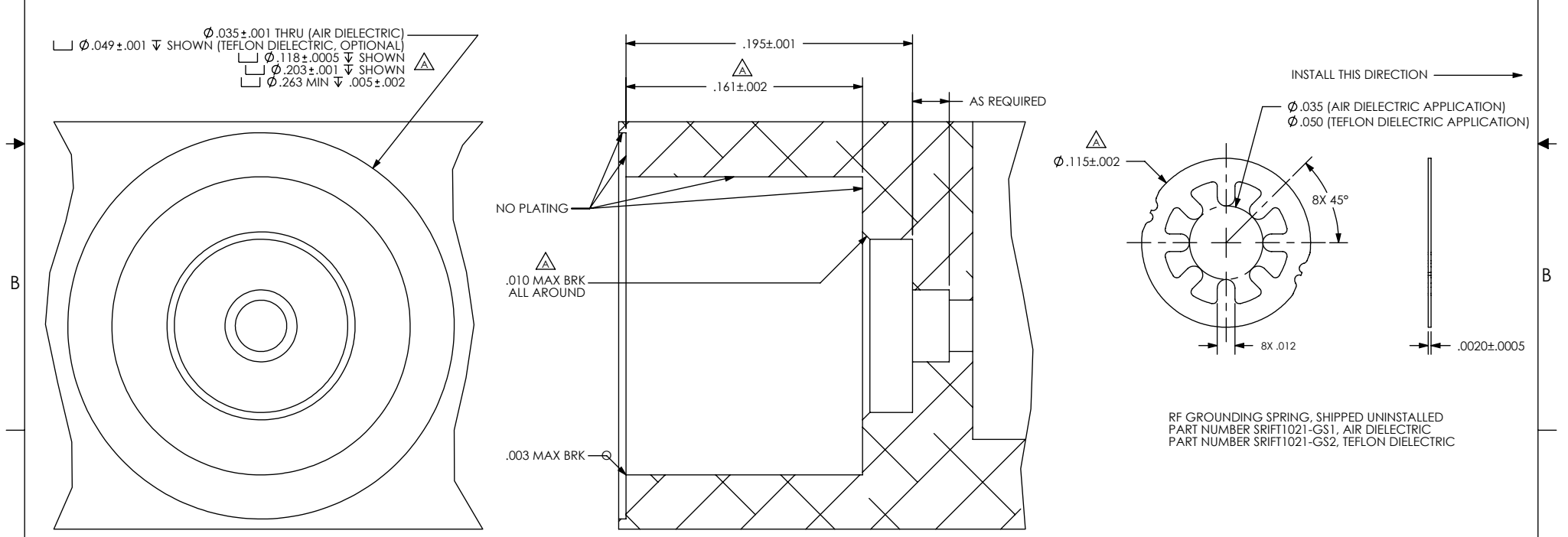
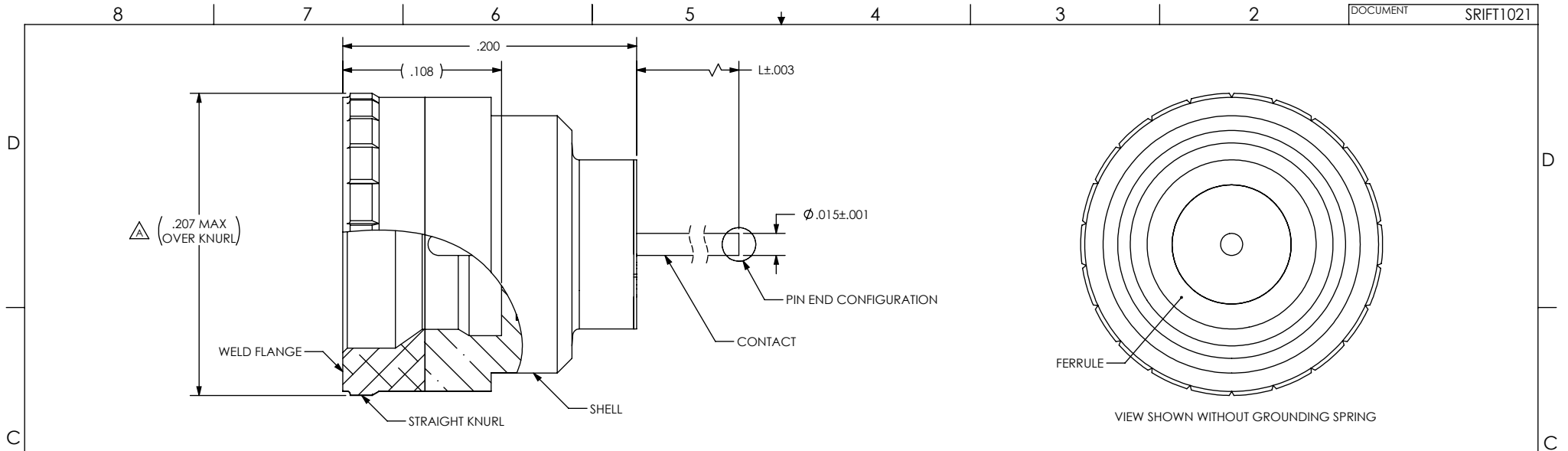
1. LEAK RATE: LESS THAN OR EQUAL TO 1X10E-9 CC/SEC He AT ONE ATMOSPHERE DIFFERENTIAL PRESSURE.
2. NOMINAL IMPEDANCE: 50 OHMS
3. INTERFACE IN ACCORDANCE WITH MIL-STD-348, SMP.
4. PERFORMANCE: VSWR (TYP) 1.4:1 TO 30 GHZ.
5. MATERIALS:  
 PIN: NICKEL-IRON-COBALT ALLOY IN ACCORDANCE WITH ASTM F15  
 DIELECTRIC: CORNING 7070 EQUIVALENT GLASS (MATCHED SEAL)  
 SHELL (WELD FLANGE): ALUMINUM ALLOY 4047 IN ACCORDANCE WITH AWS A5.8  
 RF GROUNDING SPRING: BERYLLIUM-COPPER ALLOY 172/173 IN ACCORDANCE WITH ASTM B 194 (NICKEL AND GOLD PLATED)
6. FINISH, CONTACT AND SHELL (EXCEPT WELD FLANGE):  
 NICKEL PLATE PER QQ-N-290, CLASS 2, .000100/.000250 THICK.  
 GOLD PLATE PER ASTM B488, TYPE III, CODE A, .000050/.000150 THICK.  $\Delta$
7. ORDERING INSTRUCTIONS:  
 SPECIFY BASE NUMBER FOLLOWED BY DASH NUMBERS INDICATING DETENT TYPE, PIN LENGTH, AND DIELECTRIC APPLICATION.



DIMENSIONING IAW ASME Y14.5M-1994  
 DIMENSIONS APPLY AFTER PROCESSES  
 DIMENSIONS IAW US CUSTOMARY UNITS  
 X±.1, .XX±.01, .XXX±.005,  $\angle \pm .5^\circ$   
 .010 MAX OUTSIDE R, .005 MAX INSIDE R  
 63 RMS SURFACE FINISH  
 THIRD ANGLE PROJECTION

DO NOT SCALE DRAWING

		(321) 254-4067	
www.srihermetics.com			
TITLE FEEDTHROUGH, SMP, AC LBW, PRESS-IN			
SIZE A	DOCUMENT SRIFT1021	REV A	
SCALE 8:1	CAGE CODE 3PJY7	SHEET 1 OF 2	

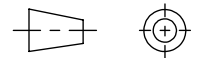


SUGGESTED HOLE DETAIL

RF GROUNDING SPRING, SHIPPED UNINSTALLED  
 PART NUMBER SRIFT1021-GS1, AIR DIELECTRIC  
 PART NUMBER SRIFT1021-GS2, TEFLON DIELECTRIC

UNLESS OTHERWISE SPECIFIED  
 DIMENSIONING IAW ASME Y14.5M-1994  
 DIMENSIONS APPLY AFTER PROCESSES  
 DIMENSIONS IAW US CUSTOMARY UNITS  
 .X±.1, .XX±.01, .XXX±.005, ∠±.5°  
 .010 MAX OUTSIDE R, .005 MAX INSIDE R  
 125 RMS SURFACE FINISH

THIRD ANGLE PROJECTION



(321) 254-4067  
 WWW.SRIHERMETICS.COM

TITLE			
FEEDTHROUGH, SMP, AC LBW, PRESS-IN			
SIZE	DOCUMENT	SRIFT1021	REV
A			A
SCALE	CAGE CODE	3PJY7	SHEET
10:1			2 OF 2