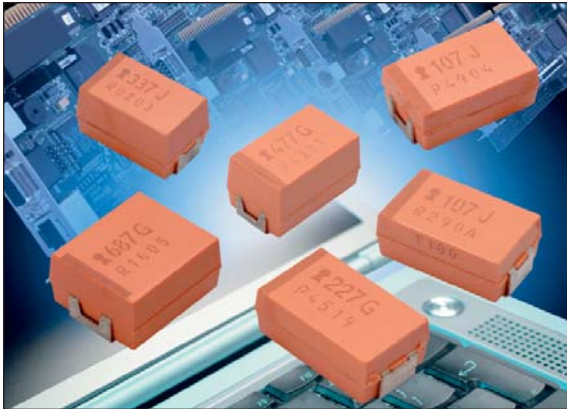


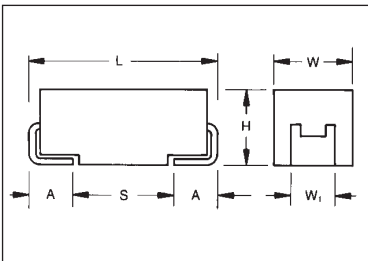
NBJ COTS+

Niobium Oxide Capacitor



NBJ, Niobium Oxide COTS+ Capacitors offer a non-burn solution for Military and Space applications. Niobium Oxide COTS+ Capacitors may be specified with failure rate grading to Weibull "B" or "C" and surge current tested in accordance with Mil-PRF-55365 options A or B. NBJ are also available with Sn/Pb terminations.

CASE DIMENSIONS: millimeters (inches)



Code	EIA Code	L±0.20 (0.008)	W+0.20 (0.008) -0.10 (0.004)	H+0.20 (0.008) -0.10 (0.004)	Termination W ₁ ±0.20 (0.008)	A+0.30 (0.012) -0.20 (0.008)	S Min.
A	3216	3.20 (0.126)	1.60 (0.063)	1.60 (0.063)	1.20 (0.047)	0.80 (0.031)	1.10 (0.043)
B	3528	3.50 (0.138)	2.80 (0.110)	1.90 (0.075)	2.20 (0.087)	0.80 (0.031)	1.40 (0.055)
C	6032	6.00 (0.236)	3.20 (0.126)	2.60 (0.102)	2.20 (0.087)	1.30 (0.051)	2.90 (0.114)
D	7343	7.30 (0.287)	4.30 (0.169)	2.90 (0.114)	2.40 (0.094)	1.30 (0.051)	4.40 (0.173)
E	7343	7.30 (0.287)	4.30 (0.169)	4.10 (0.162)	2.40 (0.094)	1.30 (0.051)	4.40 (0.173)
V	7361	7.30 (0.287)	6.10 (0.240)	3.45±0.30 (0.136±0.012)	3.10 (0.120)	1.40 (0.055)	4.40 (0.173)

HOW TO ORDER

NBJ	C	107	K	004	C	R	S	B	08	23
Style	Case Size	Capacitance Code	Capacitance Tolerance	Rated DC Voltage	ESR	Packaging	Qual	Reliability Grade	Terminations	Surge Current Option
		pF code: 1st two digits represent significant figures, 3rd digit represents number of zeros to follow	K=±10% M=±20%		C = Std.	B = Bulk R = 7" T/R S = 13" T/R W = Waffle	S = COTS+	B = 0.1% per 1000 hrs. C = 0.01% per 1000 hrs.	08 = Tin/Lead 07 = 100% Tin	00 = None 23 = 10 Cycles, +25°C 24 = 10 Cycles, -55°C & +85°C

CAPACITANCE RANGES (LETTER DENOTES CASE SIZE)

Capacitance	1.8V	2.5V	4.0V	6.0V	10V
4.7				A	A
6.8				A	A
10			A	A	A/B
15			A/B	B	B
22		A	A/B	B	B
33		A/B	B	B/C	
47	B	B	B/C	C	
68	B	C	C	C	
100	B/C	C	C	C/D	
150	C	C	C/D	D	
220	C	C	D	D/E	
330		D	D	E	
470		D/E	E	V	
680		E	V		
1000		V			

