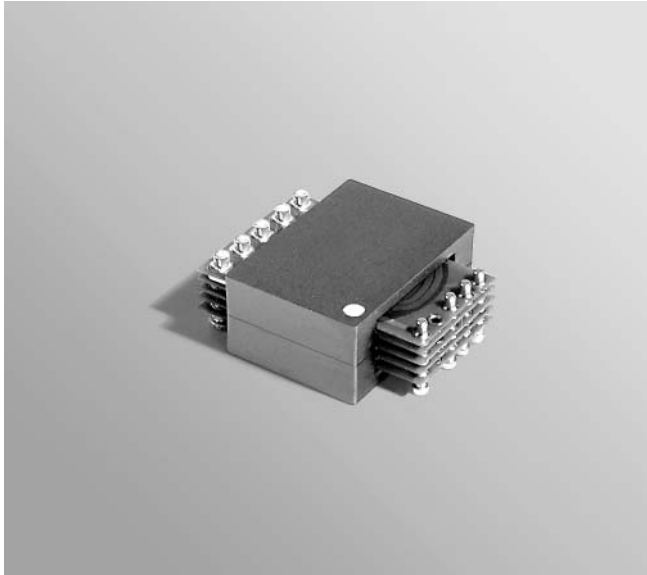


NEW!

Planar Transformer

For NSC LM5033 PWM Controller
for IBC Applications



The B0853-A was designed specifically for the National Semiconductor LM5033 high voltage PWM controller. This planar transformer can be used in push-pull, half-bridge and full-bridge topologies.

It is ideal for use in high-current power supply applications such as open loop intermediate bus converters (IBC) and closed loop voltage mode converters. It offers high efficiency in a low-profile package and features a split secondary, a separate auxiliary winding and 1500 Vdc primary to secondary isolation.

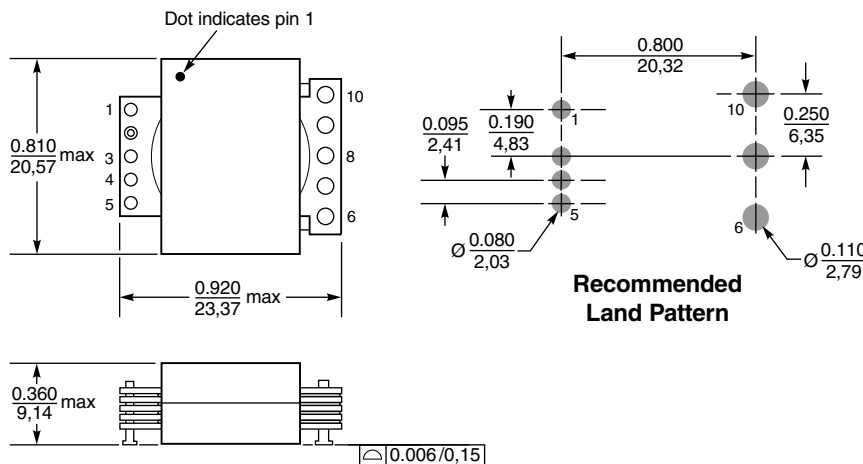
Coilcraft's **Planar Prototyping Kit C156** was used to design this transformer. No tooling or additional parts were required. To order the kit, contact Coilcraft or purchase on-line at <http://order.coilcraft.com>.

Free evaluation samples of B0853-A are available by contacting Coilcraft or by visiting www.coilcraft.com.

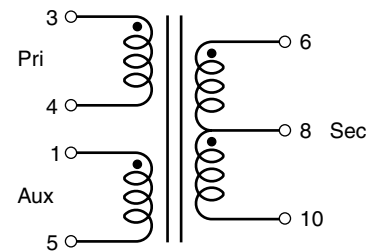
Part number	Output power (W)	Input voltage range (V)	Output voltage nom (V)	Output current (A peak)	Primary inductance ¹ min (µH)	Leakage inductance ² max (µH)	DCR max (mOhms)	Turns ratio ³ pri : sec : aux
B0853-A	200	40 – 60	10	20	46.8	0.10	Pri: 9.5 Sec: 3.5 Aux: 150.0	5 : 4 : 4

1. Inductance measured on an Agilent/HP 4284 between pins 3 and 4 at 250 kHz, 0.1 Vrms, 0 Adc.
2. Leakage inductance measured between pins 3 and 4 at 100 kHz, 0.1 Vrms, 0 Adc with pins 6 and 10 shorted.
3. Turns ratio is with the secondary windings connected in series.
4. Storage and ambient operating temperature range: -40°C to +85°C.
5. Electrical specifications at 25°C.

Dimensions



Schematic



Tape and reel: 200/13" reel 44 mm tape width

Coilcraft[®]

Specifications subject to change without notice. Document 403 Revised 07/29/04

1102 Silver Lake Road Cary, Illinois 60013 Phone 847/639-6400 Fax 847/639-1469
E-mail info@coilcraft.com Web <http://www.coilcraft.com>