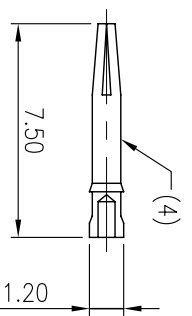
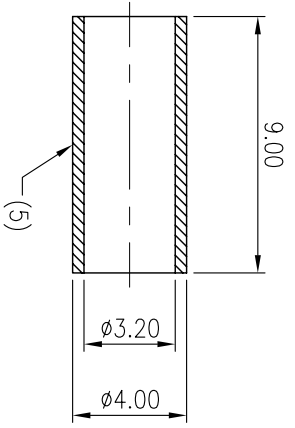
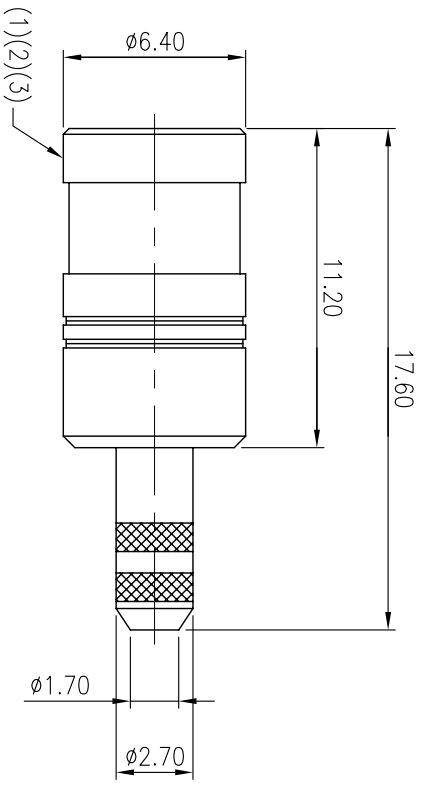


8 7 6 5 4 3 2 1
 VI.1 NOTE: THIS DEVICE IS ROHS COMPLIANT.

REVISIONS				
SYM	DESCRIPTION	DATE	APPROVED	SYM
Δ				Δ
Δ				Δ
**CUSTOMER DRAWING FOR REFERENCE ONLY, SAMPLES APPROVAL ARE REQUIRED!!				066



SPECIFICATIONS:
 ELECTRICAL DATA
 FREQUENCY RANGE: DC 6GHZ
 IMPEDANCE: 50Ω
 VSWR: < 1.45
 DIELECTRIC WITHSTANDING VOLTAGE: 750Vrms
 WORKING VOLTAGE: 170Vrms MAX.
 INSULATION RESISTANCE: 1000MΩ
 CENTER CONTACT RESISTANCE: 5.0mΩ
 OUT CONTACT RESISTANCE: 2.5mΩ
 MECHANICAL DATA
 COUPLING METHOD: SNAP-ON
 DURABILITY(MATING/UNMATING): 500 CYCLES
 ENGAGEMENT FORCE: 7.2lbs MAX.
 DISENGAGEMENT FORCE: 1.8 TO 7.2lbs

ORDER INFORMATION:
 SMB013-CMFGfX
 SMB: SMB CONNECTOR
 013: SERIES NO.
 C: CABLE TYPE
 MF: MALE HEAD, FEMALE PIN
 Gf: CONTACT PLATING, GOLD FLASH
 X: SHELL PLATING OPTION
 G: GOLD PLATED
 N: NICKEL PLATED

NO	DESCRIPTION	Q'TY	MATERIAL
5	FERRULE	1	BRASS, GOLD PLATED
4	PIN	1	BRASS, GOLD PLATED
3	BODY	1	BRASS, GOLD/NICKEL PLATED
2	INSULATOR	1	TEFLON
1	INNER BODY	1	BRASS, GOLD PLATED

TOLERANCES UNLESS OTHERWISE SPECIFIED			
SYMBOL	UNIT	SCALE	APPROVALS
Δ	mm	4/1	

SIGNATURES		DATE	MODEL
DRAWN	KEN	31/MAR/08	SMB PLUG
CHECKED	WENDY	31/MAR/08	
APPROVALS			SMB013-CMFGf_

MMT CORPORATION