

PTRV 4 /COL-WH - Marshalling panel



3001871

<https://www.phoenixcontact.com/us/products/3001871>

Please be informed that the data shown in this PDF document is generated from our Online Catalog. Please find the complete data in the user documentation. Our General Terms of Use for Downloads are valid.



Marshalling panel, nom. voltage: 250 V, nominal current: 10 A, connection method: Push-in connection, 1st, 2nd, 3rd and 4th level, Rated cross section: 1.5 mm², cross section: 0.14 mm² - 2.5 mm², mounting: NS 35/7,5, NS 35/15, color: gray

Your advantages

- Tool-free wiring in a confined space thanks to compact size
- High contact quality thanks to push-in technology as a replacement for Wire-Wrap®, TERMI-POINT®, etc.
- Individual color assignment of cable and terminal point to ensure error-free, safe operation
- Color configuration possible according to VDE 0812, VDE 0815, DIN 47100 or unlimited.
- The 2.3 mm test connection enables testing between the conductors with test pins commonly used in the industry

Commercial Data

Item number	3001871
Packing unit	1 pc
Minimum order quantity	1 pc
Note	Made to Order (non-returnable)
Sales Key	BE62
Product Key	BE6211
Catalog Page	Page 54 (C-1-2019)
GTIN	4055626038360
Weight per Piece (including packing)	18.095 g
Weight per Piece (excluding packing)	18.095 g
Customs tariff number	85369010
Country of origin	PL

PTRV 4 /COL-WH - Marshalling panel



3001871

<https://www.phoenixcontact.com/us/products/3001871>

Technical Data

Product properties

Product type	Marshalling terminal
Number of positions	2
Number of connections	16
Number of rows	4
Potentials	4

Insulation characteristics

Overvoltage category	III
----------------------	-----

Electrical properties

Rated surge voltage	6 kV
Maximum power dissipation for nominal condition	0.56 W

Connection data

Number of connections per level	4
Nominal cross section	1.5 mm ²

1st, 2nd, 3rd and 4th level

Stripping length	8 mm ... 10 mm
Conductor cross section rigid	0.14 mm ² ... 2.5 mm ²
Cross section AWG	26 ... 12 (converted acc. to IEC)
Conductor cross section flexible	0.14 mm ² ... 1.5 mm ²
Conductor cross section, flexible [AWG]	26 ... 14 (converted acc. to IEC)
Conductor cross-section flexible (ferrule without plastic sleeve)	0.14 mm ² ... 1.5 mm ²
Flexible conductor cross section (ferrule with plastic sleeve)	0.14 mm ² ... 1.5 mm ²
Nominal current	10 A
Maximum load current	10 A (with 1.5 mm ² conductor cross section)
Nominal voltage	250 V
Nominal cross section	1.5 mm ²

1st, 2nd, 3rd and 4th level Connection cross sections directly pluggable

Conductor cross section rigid	0.34 mm ² ... 2.5 mm ²
Conductor cross section, rigid [AWG]	20 ... 12 (converted acc. to IEC)
Conductor cross section flexible	0.34 mm ² ... 1.5 mm ²
Conductor cross section, flexible [AWG]	14 (converted acc. to IEC)
Conductor cross-section flexible (ferrule without plastic sleeve)	0.34 mm ² ... 1.5 mm ²
Flexible conductor cross section (ferrule with plastic sleeve)	0.34 mm ² ... 1.5 mm ²

Dimensions

Width	8.3 mm
Height NS 35/15	63 mm
Height NS 35/7,5	55.5 mm

PTRV 4 /COL-WH - Marshalling panel



3001871

<https://www.phoenixcontact.com/us/products/3001871>

Length	64 mm
--------	-------

Material specifications

Color	gray
Flammability rating according to UL 94	V0
Insulating material group	I
Insulating material	PA

Mechanical properties

Mechanical data

Open side panel	Yes
-----------------	-----

Environmental and real-life conditions

Ambient conditions

Ambient temperature (operation)	-60 °C ... 85 °C
Ambient temperature (storage/transport)	-25 °C ... 55 °C (for a short time, not exceeding 24 h, -60 °C to +70 °C)
Ambient temperature (assembly)	-5 °C ... 70 °C
Ambient temperature (actuation)	-5 °C ... 70 °C
Permissible humidity (storage/transport)	30 % ... 70 %

Mounting

Mounting type	NS 35/7,5
	NS 35/15

Drawings

Circuit diagram




PTRV 4 /COL-WH - Marshalling panel



3001871


<https://www.phoenixcontact.com/us/products/3001871>


Approvals


 CSA Approval ID: 13631				
	Nominal Voltage U_N	Nominal Current I_N	Cross Section AWG	Cross Section mm^2
Use group B	300 V	10 A	26 - 14	-
Use group D	300 V	10 A	26 - 14	-

 IECEE CB Scheme Approval ID: NL-58817				
	Nominal Voltage U_N	Nominal Current I_N	Cross Section AWG	Cross Section mm^2
	250 V	10 A	-	-

 EAC Approval ID: RU C-DE.BL08.B.00682				
---	--	--	--	--

 cULus Recognized Approval ID: E60425				
	Nominal Voltage U_N	Nominal Current I_N	Cross Section AWG	Cross Section mm^2
Use group D	300 V	10 A	26 - 14	-

 KEMA-KEUR Approval ID: 71-102890				
	Nominal Voltage U_N	Nominal Current I_N	Cross Section AWG	Cross Section mm^2
Only flexible conductors	250 V	10 A	-	0.14 - 1.5
Only rigid conductors	250 V	10 A	-	0.14 - 2.5

 EAC Approval ID: B.01687				
--	--	--	--	--

PTRV 4 /COL-WH - Marshalling panel



3001871

<https://www.phoenixcontact.com/us/products/3001871>

Classifications

ECLASS

ECLASS-11.0

27141120

ETIM

ETIM 8.0

EC000897

UNSPSC

UNSPSC 21.0

39121400

PTRV 4 /COL-WH - Marshalling panel



3001871

<https://www.phoenixcontact.com/us/products/3001871>

Environmental Product Compliance

China RoHS	Environmentally friendly use period: unlimited = EFUP-e
	No hazardous substances above threshold values

PTRV 4 /COL-WH - Marshalling panel



3001871

<https://www.phoenixcontact.com/us/products/3001871>

Accessories

DP-PTRV 4 - Spacer plate

3270163

<https://www.phoenixcontact.com/us/products/3270163>



Spacer plate, length: 63.6 mm, width: 8.3 mm, height: 54 mm, color: gray

CDC-PTRV - Retaining bracket

3270167

<https://www.phoenixcontact.com/us/products/3270167>



Retaining bracket, via four PTRV single modules, pitch: 8.3 mm, width: 35.6 mm, height: 71.5 mm, color: gray

PTRV 4 /COL-WH - Marshalling panel

3001871

<https://www.phoenixcontact.com/us/products/3001871>



PT-IL - Mounting material

3208090

<https://www.phoenixcontact.com/us/products/3208090>

Operating decal for the push-in Technology



SZF 0-0,4X2,5 - Screwdriver

1204504

<https://www.phoenixcontact.com/us/products/1204504>

Actuation tool, for ST terminal blocks, also suitable for use as a bladed screwdriver, size: 0.4 x 2.5 x 75 mm, 2-component grip, with non-slip grip



PTRV 4 /COL-WH - Marshalling panel



3001871

<https://www.phoenixcontact.com/us/products/3001871>

ST-BW 0 - Actuation tool

1200135

<https://www.phoenixcontact.com/us/products/1200135>

Actuation tool, for all 1.5 mm² spring cages from PT 1,5/S and FT 1,5/S

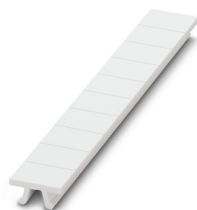


ZB 8,3:UNBEDRUCKT - Zack marker strip

0803444

<https://www.phoenixcontact.com/us/products/0803444>

Zack marker strip, Strip, white, unlabeled, can be labeled with: PLOTMARK, CMS-P1-PLOTTER, mounting type: snapped, for terminal block width: 8.3 mm, lettering field size: 10.5 x 8.3 mm



PTRV 4 /COL-WH - Marshalling panel



3001871

<https://www.phoenixcontact.com/us/products/3001871>

ZB 8,3,LGS:FORTL.ZAHLEN - Zack marker strip

0803480

<https://www.phoenixcontact.com/us/products/0803480>



Zack marker strip, Strip, white, labeled, can be labeled with: CMS-P1-PLOTTER, mounting type: snapped, for terminal block width: 8.3 mm, lettering field size: 10.5 x 8.3 mm

ZB 8,3,QR:FORTL.ZAHLEN - Zack marker strip

0803479

<https://www.phoenixcontact.com/us/products/0803479>



Zack marker strip, Strip, white, labeled, can be labeled with: CMS-P1-PLOTTER, mounting type: snapped, for terminal block width: 8.3 mm, lettering field size: 10.5 x 8.3 mm

PTRV 4 /COL-WH - Marshalling panel

3001871

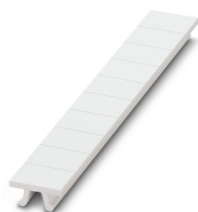
<https://www.phoenixcontact.com/us/products/3001871>



ZB 8,3 CUS - Zack marker strip

8191573

<https://www.phoenixcontact.com/us/products/8191573>

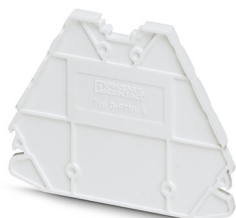


Zack marker strip, Strip, white, labeled according to customer specifications, mounting type: snap into tall marker groove, for terminal block width: 8.3 mm, lettering field size: 10.5 x 8.3 mm

D-PTRV 4 WH - End cover

3270151

<https://www.phoenixcontact.com/us/products/3270151>



End cover, length: 63.6 mm, width: 3.8 mm, height: 48.9 mm, color: white

PTRV 4 /COL-WH - Marshalling panel



3001871

<https://www.phoenixcontact.com/us/products/3001871>

D-PTRV 4 WH 1-4 - End cover

3270152

<https://www.phoenixcontact.com/us/products/3270152>

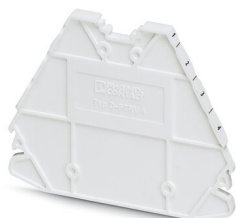


End cover, length: 63.6 mm, width: 2.2 mm, height: 48.9 mm, color: white

D-PTRV 4 WH 1-4 LGS - End cover

3270234

<https://www.phoenixcontact.com/us/products/3270234>



End cover, length: 63.6 mm, width: 2.2 mm, height: 48.9 mm, color: white

PTRV 4 /COL-WH - Marshalling panel



3001871

<https://www.phoenixcontact.com/us/products/3001871>

D-PTRV 4 WH 4-1 - End cover

3270236

<https://www.phoenixcontact.com/us/products/3270236>



End cover, length: 63.6 mm, width: 2.2 mm, height: 48.9 mm, color: white

D-PTRV 4 WH 4-1 LGS - End cover

3270238

<https://www.phoenixcontact.com/us/products/3270238>



End cover, length: 63.6 mm, width: 2.2 mm, height: 48.9 mm, color: white

PTRV 4 /COL-WH - Marshalling panel



3001871

<https://www.phoenixcontact.com/us/products/3001871>

D-PTRV 4 WH A-D - End cover

3270153

<https://www.phoenixcontact.com/us/products/3270153>



End cover, length: 63.6 mm, width: 2.2 mm, height: 48.9 mm, color: white

D-PTRV 4 WH A-D LGS - End cover

3270235

<https://www.phoenixcontact.com/us/products/3270235>



End cover, length: 63.6 mm, width: 2.2 mm, height: 48.9 mm, color: white

PTRV 4 /COL-WH - Marshalling panel



3001871

<https://www.phoenixcontact.com/us/products/3001871>

D-PTRV 4 WH D-A - End cover

3270237

<https://www.phoenixcontact.com/us/products/3270237>



End cover, length: 63.6 mm, width: 2.2 mm, height: 48.9 mm, color: white

D-PTRV 4 WH D-A LGS - End cover

3270239

<https://www.phoenixcontact.com/us/products/3270239>



End cover, length: 63.6 mm, width: 2.2 mm, height: 48.9 mm, color: white

PTRV 4 /COL-WH - Marshalling panel

3001871

<https://www.phoenixcontact.com/us/products/3001871>



NS 35/ 7,5 PERF 2000MM - DIN rail perforated

0801733

<https://www.phoenixcontact.com/us/products/0801733>



DIN rail perforated, acc. to EN 60715, material: Steel, galvanized, passivated with a thick layer, Standard profile, color: silver, Pack of 25 (50 m)

NS 35/ 7,5 UNPERF 2000MM - DIN rail, unperforated

0801681

<https://www.phoenixcontact.com/us/products/0801681>



DIN rail, unperforated, acc. to EN 60715, material: Steel, galvanized, passivated with a thick layer, Standard profile, color: silver, Pack of 25 (50 m)

PTRV 4 /COL-WH - Marshalling panel

3001871

<https://www.phoenixcontact.com/us/products/3001871>



NS 35/ 7,5 WH PERF 2000MM - DIN rail perforated

1204119

<https://www.phoenixcontact.com/us/products/1204119>



DIN rail perforated, acc. to EN 60715, material: Steel, Galvanized, white passivated, Standard profile, color: silver, Pack of 25 (50 m)

NS 35/ 7,5 WH UNPERF 2000MM-VPE 10 - DIN rail, unperforated

1204122

<https://www.phoenixcontact.com/us/products/1204122>



DIN rail, unperforated, acc. to EN 60715, material: Steel, Galvanized, white passivated, Standard profile, color: silver, Pack of 10 (20 m)

PTRV 4 /COL-WH - Marshalling panel

3001871

<https://www.phoenixcontact.com/us/products/3001871>



NS 35/ 7,5 AL UNPERF 2000MM - DIN rail, unperforated

0801704

<https://www.phoenixcontact.com/us/products/0801704>



DIN rail, unperforated, acc. to EN 60715, material: Aluminum, uncoated, Standard profile, color: silver, Pack of 25 (50 m)

NS 35/ 7,5 ZN PERF 2000MM - DIN rail perforated

1206421

<https://www.phoenixcontact.com/us/products/1206421>



DIN rail perforated, acc. to EN 60715, material: Steel, galvanized, Standard profile, color: silver, Pack of 25 (50 m)

PTRV 4 /COL-WH - Marshalling panel

3001871

<https://www.phoenixcontact.com/us/products/3001871>



NS 35/ 7,5 ZN UNPERF 2000MM - DIN rail, unperforated

1206434

<https://www.phoenixcontact.com/us/products/1206434>



DIN rail, unperforated, acc. to EN 60715, material: Steel, galvanized, Standard profile, color: silver, Pack of 25 (50 m)

NS 35/ 7,5 CU UNPERF 2000MM-VPE 10 - DIN rail, unperforated

0801762

<https://www.phoenixcontact.com/us/products/0801762>



DIN rail, unperforated, acc. to EN 60715, material: Copper, uncoated, Standard profile, color: copper-colored, Pack of 10 (20 m)

PTRV 4 /COL-WH - Marshalling panel

3001871

<https://www.phoenixcontact.com/us/products/3001871>



NS 35/ 7,5 CAP - End cap

1206560

<https://www.phoenixcontact.com/us/products/1206560>

DIN rail end piece, for DIN rail NS 35/7.5



CLIPFIX 35 - End clamp

3022218

<https://www.phoenixcontact.com/us/products/3022218>

Quick mounting end clamp for NS 35/7,5 DIN rail or NS 35/15 DIN rail, with marking option, width: 9.5 mm, color: gray



PTRV 4 /COL-WH - Marshalling panel

3001871

<https://www.phoenixcontact.com/us/products/3001871>



CLIPFIX 35-5 - End clamp

3022276

<https://www.phoenixcontact.com/us/products/3022276>

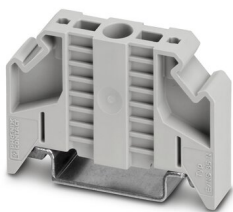


Quick mounting end clamp for NS 35/7,5 DIN rail or NS 35/15 DIN rail, with marking option, with parking option for FBS...5, FBS...6, KSS 5, KSS 6, width: 5.15 mm, color: gray

E/NS 35 N - End clamp

0800886

<https://www.phoenixcontact.com/us/products/0800886>



End clamp, width: 9.5 mm, color: gray

PTRV 4 /COL-WH - Marshalling panel



3001871

<https://www.phoenixcontact.com/us/products/3001871>

E/UK - End clamp

1201442

<https://www.phoenixcontact.com/us/products/1201442>

End clamp, material: PA, color: gray, Mounting on a DIN rail NS 32 or NS 35



E/UK 1 - End clamp

1201413

<https://www.phoenixcontact.com/us/products/1201413>

End clamps, for supporting the ends of double-level and three-level terminal blocks, width: 10 mm, color: gray



Phoenix Contact 2023 © - all rights reserved
<https://www.phoenixcontact.com>

Phoenix Contact USA
586 Fulling Mill Road
Middletown, PA 17057, United States
(+717) 944-1300
info@phoenixcon.com