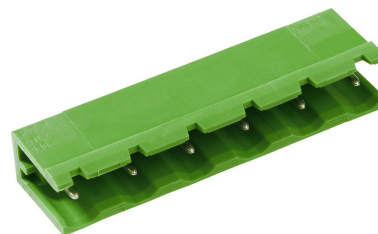




STLZ960/..-7.62-H-GREEN



Technical Data

Wire Sizes	Insulating Material
Solid min -	Material PA 6.6
solid max -	Flammability Class UL 94 V-0
Stranded (flexible) -	Temperatures
min -	Operating Temperature -30 °C - 105 °C
Stranded (flexible) -	Wave Soldering Process
max -	Soldering Temperature, recommended 265 °C
Stranded with Ferrule -	Peak Soldering Time, recommended 3-4 s
min -	Reflow Process
Stranded with Ferrule -	Soldering Temperature, recommended -
max -	Peak Soldering Time, recommended -
Dimensions	
Stripped Length	
PCB Hole Diameter 1.4 mm	
Materials	
Contact Pin Copper Alloy	

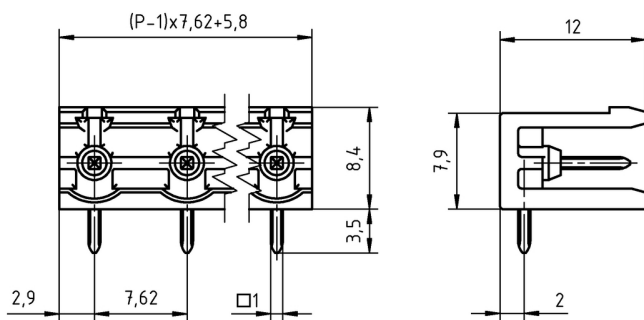
Colours

GREEN	RAL6018	
LIGHT GREEN	similar RAL 6018	

Colours according to RAL, there may be variations on colour due to production conditions.
Special colours on request.

Counterparts (Spacing 7.62 mm)


Pin Strip/Terminal Blocks
AKZ960



Order Data (Spacing mm)

Poles	Width (mm)	Article Designation	Article Number	PU
2	13.42	STLZ960/2-7.62-H-GREEN	50960025031E	100
3	21.04	STLZ960/3-7.62-H-GREEN	50960035031E	100
4	28.66	STLZ960/4-7.62-H-GREEN	50960045031E	100
5	36.28	STLZ960/5-7.62-H-GREEN	50960055031E	100
6	43.90	STLZ960/6-7.62-H-GREEN	50960065031D	50
7	51.52	STLZ960/7-7.62-H-GREEN	50960075031D	50
8	59.14	STLZ960/8-7.62-H-GREEN	50960085031D	50
9	66.76	STLZ960/9-7.62-H-GREEN	50960095031D	50
10	74.38	STLZ960/10-7.62-H-GREEN	50960105031D	50
11	82.00	STLZ960/11-7.62-H-GREEN	50960115031D	50
12	89.62	STLZ960/12-7.62-H-GREEN	50960125031D	50
13	97.24	STLZ960/13-7.62-H-GREEN	50960135031D	50
14	104.86	STLZ960/14-7.62-H-GREEN	50960145031D	50
15	112.48	STLZ960/15-7.62-H-GREEN	50960155031D	50
16	120.10	STLZ960/16-7.62-H-GREEN	50960165031D	50

Accessories

Figure	Designation	Article Number
	Coding star CS2-5.0/5.08-RED	50000000024



Dividing element SE-STL950-GREEN	50950000002
----------------------------------	-------------

Ratings



Usegroup	B	C	D	
Rated Voltage	300 V	150 V	300 V	400 V
Rated Current	15 A	15 A	10 A	12 A
Overtoltage Category				III
Test Voltage	1.6 kV	1.6 kV	1.6 kV	6.0 kV
Pollution Degree				3