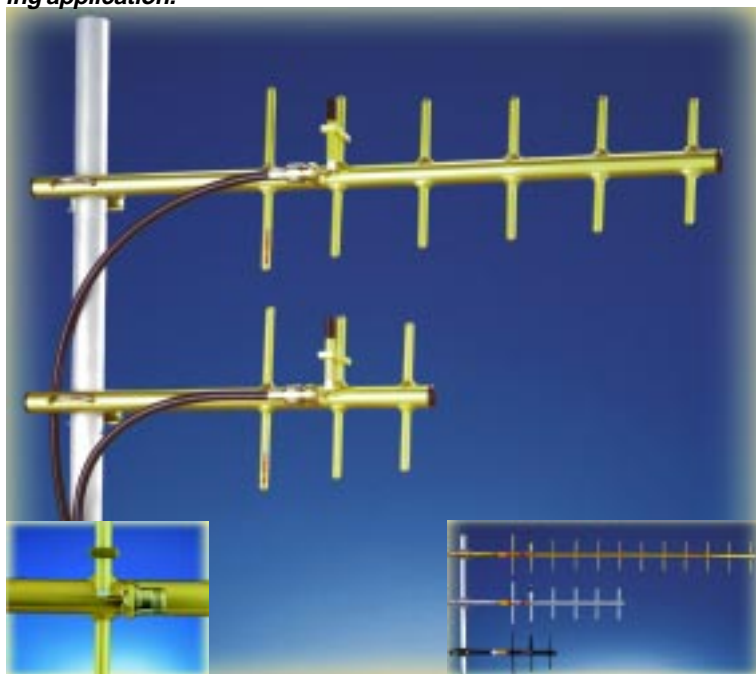


DIRECTIONAL YAGI MODELS - Superior Quality and Performance!

Be sure to take a close look! This is undoubtedly the finest designed and fully featured gamma match Yagi in the industry. The fully welded **ANTENEX**® Yagi antenna features full 360-degree welds around each element to boom joint and they are fully gold anodized for corrosion resistance. Our engineering staff has optimized this product for forward gain by computer analysis and then field-tested for conformance to the analysis.

Don't forget, each Yagi is hand tuned on an HP® network analyzer for best power match and lowest VSWR. This is your assurance of the best possible performance every time. Each yagi also ships complete with a high quality mounting kit that includes a heavy duty bracket and stainless steel hardware at no extra charge! Whether your installation calls for the super high durability of a fully welded Yagi or the lower cost, yet very high durability of a silver series Yagi, **ANTENEX**® promises to be the correct choice for your demanding application.



Inside: 6 Element Yagi, 3 Element Yagi. Left: Plated Brass "N" Connector. Right: Welded Gold Yagi, Silver Yagi, Welded Black Yagi

Technical Data - Product Features & Information

- **VSWR:** <1.5:1
- **Maximum Power:** 500 watts - VHF
300 watts - UHF & 800/900 MHz
- **Impedance:** 50 ohms
- **Mounting:** VHF up to 2" mast. UHF and 800/900 MHz up to 1-5/8" mast.
- **Tuning:** All Yagi's are pre-tuned on a HP® Network Analyzer to the lowest frequency for that model.
- **Elements Material:** 3/8" diameter solid 6061-T6 aluminum
- **Boom Material:** Heat treated 6061-T6 aluminum tube
- **Boom Diameter:** UHF, 800/900 MHz - 7/8"
VHF - 3 dB 7/8", 5 dB 1 1/4"
- **Finish:** Protective gold or black anodized finish. Allow longer lead time for black finish models. Silver Series feature a bright finish.
- **Shipping:** All models are UPS shippable. Welded VHF may require truck freight.
- **Assembly:** VHF models require light assembly. All other models come fully assembled.
- **Mounting:** Stainless steel, brackets included.
- **Termination Type:** N Female. SO239 available upon request (Y883PL uses a SO239 Connector)
- **Lightning Protection:** DC ground
- **Length:**

VHF	3 Element - 41-1/2"	5 Element - 72"
UHF	3 Element - 20-3/16"	5 Element - 37"
	6 Element - 44"	12 Element - 72"
800/900	3 Element - 16-3/4"	6 Element - 27-3/4"
	12 Element - 49"	

Ordering Guide - Clear, Easy & Sensible!

Y4505 = Welded Yagi in gold, 450-470 MHz, 5 Elements.

Y	Antenna Style	Y = Welded and Gold Anodized Yagi YB = Welded and Black Anodized Yagi YS = Silver Series Yagi Black finish is not available on the Silver Series.
	450	Frequency Frequency component of part number in bold below: 88-108 136-150 150-174 220-250 250-285 340-360 360-380 380-406 406-430 430-450 450-470 470-490 490-512 806-896 896-970 1850-1970 2400-2500
5	Elements	3 = 3 Elements 5 = 5 Elements 6 = 6 Elements 12 = 12 Elements 15 = 15 Elements

Special Factory Tuning Available For only \$10.00.
Mounting brackets included at no extra charge.

Model	Frequency	Elements	Front-Back	
			Gain	Ratio
FULLY WELDED NON-ANODIZED VHF MODELS				
YXXX3W	User Defined	3	7.1 dBd	17 dB
YXXX5W	User Defined	5	9.2 dBd	20 dB
<i>Note: Please specify frequency when ordering non-anodized models. Available in VHF frequencies only.</i>				

GOLD ANODIZED VHF MODELS				
Y883PL	88-108 MHz	3	7.1 dBd	17 dB
Y1363	136-150 MHz	3	7.1 dBd	17 dB
Y1365	136-150 MHz	5	9.2 dBd	20 dB
Y1503	150-174 MHz	3	7.1 dBd	17 dB
Y1505	150-174 MHz	5	9.2 dBd	20 dB
Y2203	220-250 MHz	3	7.1 dBd	17 dB
Y2205	220-250 MHz	5	9.2 dBd	20 dB
Y2503	250-285 MHz	3	7.1 dBd	17 dB
Y2505	250-285 MHz	5	9.2 dBd	20 dB
<i>Note: VHF Yagi antennas have bolted elements and require light assembly to allow us to ship UPS.</i>				

GOLD ANODIZED FULLY WELDED UHF MODELS				
Y3403	340-360 MHz	3	7.1 dBd	17 dB
Y3405	340-360 MHz	5	9.2 dBd	20 dB
Y3406	340-360 MHz	6	10.2 dBd	20 dB
Y3603	360-380 MHz	3	7.1 dBd	17 dB
Y3605	360-380 MHz	5	9.2 dBd	20 dB
Y3606	360-380 MHz	6	10.2 dBd	20 dB
Y3803	380-406 MHz	3	7.1 dBd	17 dB
Y3805	380-406 MHz	5	9.2 dBd	20 dB
Y3806	380-406 MHz	6	10.2 dBd	20 dB
Y4063	406-430 MHz	3	7.1 dBd	17 dB
Y4065	406-430 MHz	5	9.2 dBd	20 dB
Y4066	406-430 MHz	6	10.2 dBd	20 dB
Y40612	406-430 MHz	12	11 dBd	20 dB
Y4303	430-450 MHz	3	7.1 dBd	17 dB
Y4305	430-450 MHz	5	9.2 dBd	20 dB
Y4306	430-450 MHz	6	10.2 dBd	20 dB
Y43012	430-450 MHz	12	11 dBd	20 dB
Y4503	450-470 MHz	3	7.1 dBd	17 dB
Y4505	450-470 MHz	5	9.2 dBd	20 dB
Y4506	450-470 MHz	6	10.2 dBd	20 dB
Y45012	450-470 MHz	12	11 dBd	20 dB
Y4703	470-490 MHz	3	7.1 dBd	17 dB
Y4705	470-490 MHz	5	9.2 dBd	20 dB
Y4706	470-490 MHz	6	10.2 dBd	20 dB
Y47012	470-490 MHz	12	11 dBd	20 dB
Y4903	490-512 MHz	3	7.1 dBd	17 dB
Y4905	490-512 MHz	5	9.2 dBd	20 dB
Y4906	490-512 MHz	6	10.2 dBd	20 dB
Y49012	490-512 MHz	12	11 dBd	20 dB

GOLD ANODIZED FULLY WELDED 800/900 MHz MODELS				
Y8063	806-896 MHz	3	6 dBd	15 dB
Y8066	806-896 MHz	6	9 dBd	16 dB
Y80612	806-896 MHz	12	11 dBd	20 dB
Y8963	896-970 MHz	3	6 dBd	15 dB
Y8966	896-970 MHz	6	9 dBd	16 dB
Y89612	896-970 MHz	12	11 dBd	20 dB
<i>Note: Welded, black anodized Yagi antennas are the same price as gold models. Allow extra delivery time for black models.</i>				

BLACK SILVER FUSION 1.8 AND 2.4 GHz MODELS				
YB185015	1850-1970 MHz	15	12.5 dBd	20 dB
YB240015	2400-2500 MHz	15	12.5 dBd	20 dB

Front-to-Back

Model	Frequency	Elements	Gain	Ratio
-------	-----------	----------	------	-------

SILVER SERIES VHF MODELS

YS1363	136-150 MHz	3	7.1 dBd	17 dB
YS1365	136-150 MHz	5	9.2 dBd	20 dB
YS1503	150-174 MHz	3	7.1 dBd	17 dB
YS1505	150-174 MHz	5	9.2 dBd	20 dB
YS2203	220-250 MHz	3	7.1 dBd	17 dB
YS2205	220-250 MHz	5	9.2 dBd	20 dB
YS2503	250-285 MHz	3	7.1 dBd	17 dB
YS2505	250-285 MHz	5	9.2 dBd	20 dB

Note: VHF Yagi antennas have bolted elements and require light assembly to maintain UPS shippability.

SILVER SERIES UHF MODELS

YS3403	340-360 MHz	3	7.1 dBd	17 dB
YS3405	340-360 MHz	5	9.2 dBd	20 dB
YS3406	340-360 MHz	6	10.2 dBd	20 dB
YS3603	360-380 MHz	3	7.1 dBd	17 dB
YS3605	360-380 MHz	5	9.2 dBd	20 dB
YS3606	360-380 MHz	6	10.2 dBd	20 dB
YS3803	380-406 MHz	3	7.1 dBd	17 dB
YS3805	380-406 MHz	5	9.2 dBd	20 dB
YS3806	380-406 MHz	6	10.2 dBd	20 dB
YS4063	406-430 MHz	3	7.1 dBd	17 dB
YS4065	406-430 MHz	5	9.2 dBd	20 dB
YS4066	406-430 MHz	6	10.2 dBd	20 dB
YS40612	406-430 MHz	12	11 dBd	20 dB
YS4303	430-450 MHz	3	7.1 dBd	17 dB
YS4305	430-450 MHz	5	9.2 dBd	20 dB
YS4306	430-450 MHz	6	10.2 dBd	20 dB
YS43012	430-450 MHz	12	11 dBd	20 dB
YS4503	450-470 MHz	3	7.1 dBd	17 dB
YS4505	450-470 MHz	5	9.2 dBd	20 dB
YS4506	450-470 MHz	6	10.2 dBd	20 dB
YS45012	450-470 MHz	12	11 dBd	20 dB
YS4703	470-490 MHz	3	7.1 dBd	17 dB
YS4705	470-490 MHz	5	9.2 dBd	20 dB
YS4706	470-490 MHz	6	10.2 dBd	20 dB
YS47012	470-490 MHz	12	11 dBd	11.5 dB
YS4903	490-512 MHz	3	7.1 dBd	17 dB
YS4905	490-512 MHz	5	9.2 dBd	20 dB
YS4906	490-512 MHz	6	10.2 dBd	20 dB
YS49012	490-512 MHz	12	11 dBd	12.5 dB

SILVER SERIES 800/900 MHz MODELS

YS8063	806-896 MHz	3	6 dBd	15 dB
YS8066	806-896 MHz	6	9 dBd	16 dB
YS80612	806-896 MHz	12	11 dBd	20 dB
YS8963	896-970 MHz	3	6 dBd	15 dB
YS8966	896-970 MHz	6	9 dBd	16 dB
YS89612	896-970 MHz	12	11 dBd	20 dB

Note: The Silver Series Yagi antennas have the same great optimized designs and plated brass connectors as our welded gold anodized models.

Model Description

REPLACEMENT MOUNTING KITS

YM78	Yagi Mounting Kit for 7/8 Boom
YM125	HD Yagi Mounting Kit 7/8" to 4 1/2"
YM78VH	7/8 Boom Mounting Kit Vertical/Horizontal

ANTENNA MASTS

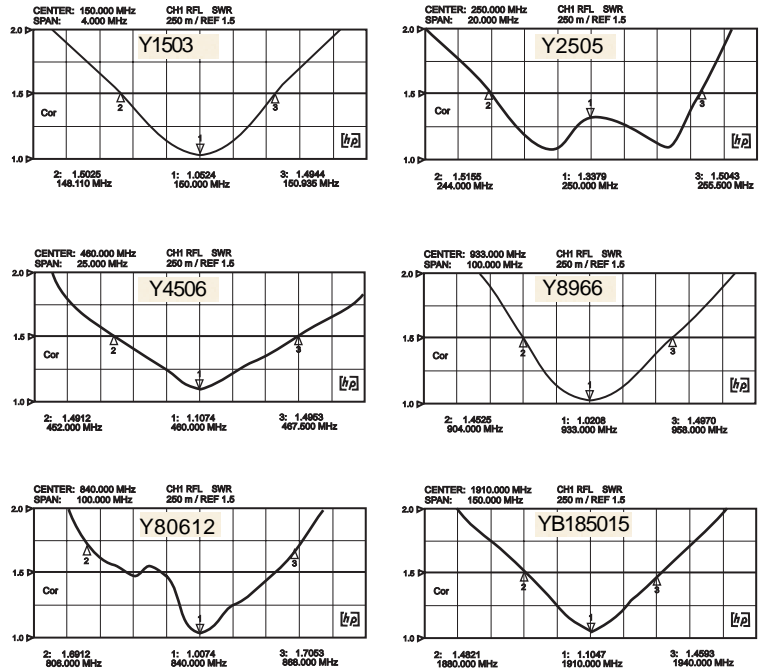
YMST4	4"x1-1/4" OD x .065" wall alum. mast
YMST8	8"x1-1/4" OD x .065" wall alum. mast
YMST18	18"x1-1/4" OD x .065" wall alum. mast(2p)

ACCESSORIES

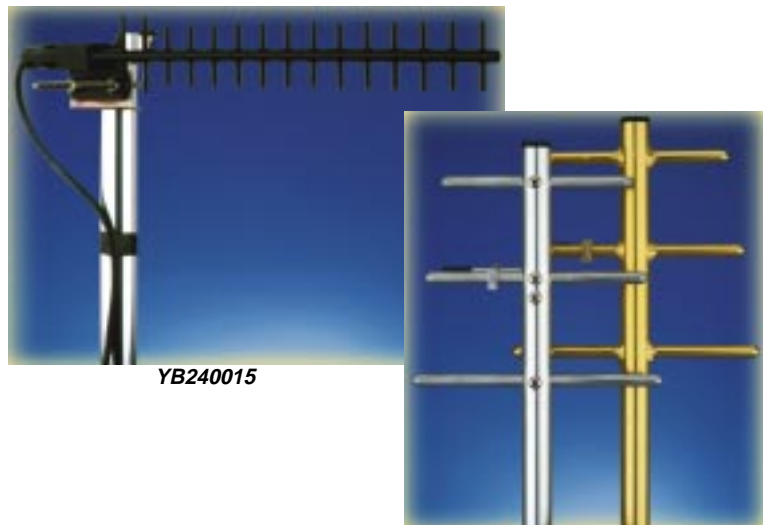
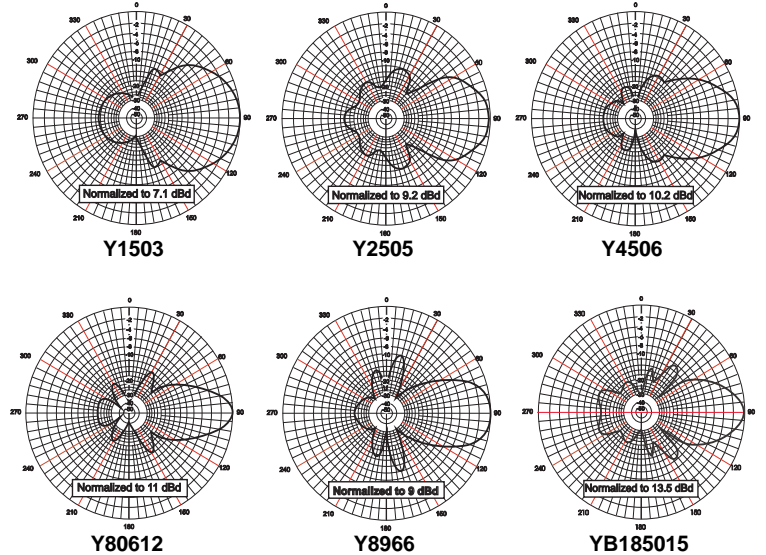
CCT213	Crimp tool for LMR400, 9913, RG213,214
PT4005NN	Pigtail, LMR400, 5' N male to N male
PT40010NN	Pigtail, LMR400, 10' N male to N male
PT40050NN	Pigtail, LMR400, 50' N male to N male
PT40075NN	Pigtail, LMR400, 75' N male to N male
PT400100NN	Pigtail, LMR400, 100' N male to N male
R400100	100' spool High Performance LMR400
R400500	500' spool High Performance LMR400
SEALTUBE2	1" dia. x 2' long shrink tube for connector

Note: Special coax and shrink tube lengths are also available! Please call for a quote.

VSWR



Vertical Field Patterns



Your choice - Bolted or Welded