

# Build-Out Optical Attenuators, LC

LC, 20 dB

CORNING

Corning universal build-out optical attenuators are used to interconnect single-mode connectors with or without attenuation. The LC attenuator styles are available in 0-16, 18 and 20 dB levels. Each build-out attenuator requires the use of a build-out block (sold separately) that replaces the standard adapter. The unique design of these attenuators allows for easy change-out of attenuation values with no tools required and the 0 dB offering is very useful for connections where no additional attenuation is required.

## Features and Benefits

### Dual-wavelength design

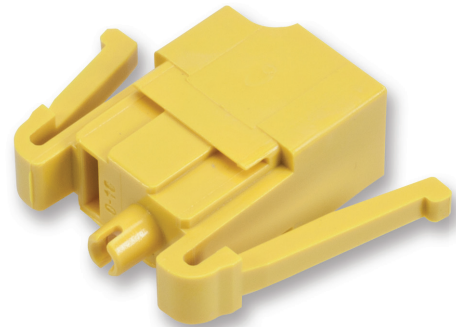
Operable at 1310 and 1550 nm

### Easy change-out of attenuation values

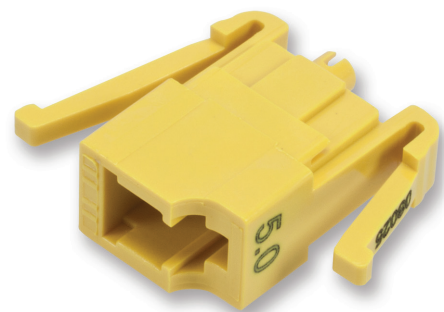
No tools required

### Single-mode precision sleeve

Provides precise alignment



Part Number: ATN-A10-BO-20



Part Number: ATN-A10-BO-20

# Build-Out Optical Attenuators, LC

LC, 20 dB

CORNING

## Specifications

### General Specifications

Attenuator Type	Build-Out
Compatibility	LC
Packaging	Single Pack
Product Type	Attenuators

### Temperature Range

Operation	-40 °C to 65 °C (-40 °F to 149 °F)
-----------	------------------------------------

### Design - Connector

Housing Material	Composite
Housing Colour	yellow

### Optical Specifications - Connector

Attenuation	20 dB
Attenuation Tolerance	± 3 dB
Reflectance	≤ -40 dB

### Chemical characteristics

RoHS	Free of hazardous substances according to RoHS 2002/95/EG
------	---

## Ordering Information

Part Number	ATN-A10-BO-20
Product Description	LC Build-Out Optical Attenuator

# Build-Out Optical Attenuators, LC

LC, 20 dB

The CORNING logo is displayed in white, uppercase letters within a solid blue square.

## Shipping Information

Units per Delivery	1/1
Package Contents	Attenuator, LC



**Corning Optical Communications GmbH & Co. KG · Leipziger Strasse 121 · 10117 Berlin, GERMANY**  
**00 800 2676 4641 · FAX: +49 30 5303 2335 · [www.corning.com/opcomm/emea](http://www.corning.com/opcomm/emea)**

A complete listing of the trademarks of Corning Optical Communications is available at [www.corning.com/opcomm/emea/trademarks](http://www.corning.com/opcomm/emea/trademarks). Corning Optical Communications is ISO 9001 and ISO 14001 certified. © 2014 Corning Optical Communications. All rights reserved.