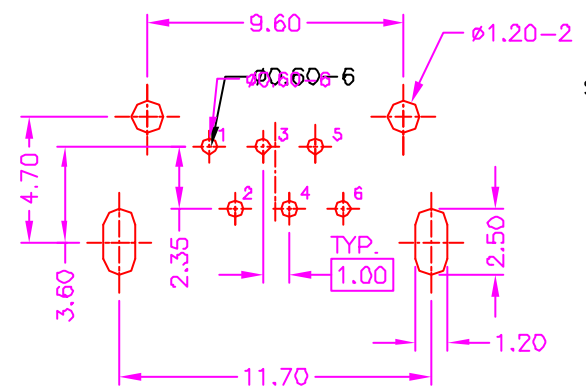
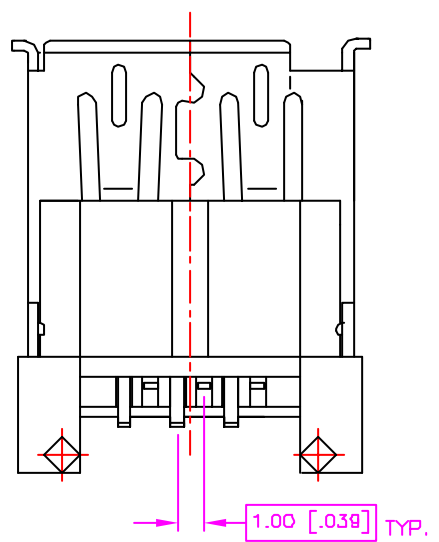
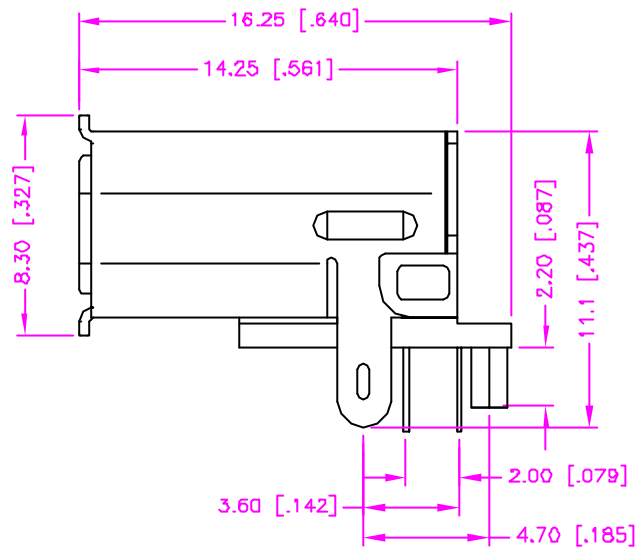
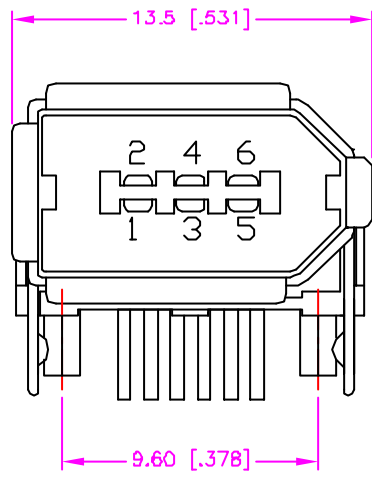


REV.	DESCRIPTION	DATE
A	RELEASE	Jan. 13, 2004
B		
C		



RECOMMEND P.C.B. LAYOUT
TOP VIEW

MATERIALS

- HOUSING : POLYESTER (UL 94V-0), BLACK.
- TERMINAL : COPPER ALLOY. (t=0.25mm)
- SHELL : COPPER ALLOY, NICKEL PLATING. (t=0.40mm)

SPECIFICATION

- CURRENT RATING : 1 AMP. MAX.
- DIELECTRIC WITHSTANDING VOLTAGE : 500V AC R.M.S. FOR ONE MINUTE.
- INSULATION RESISTANCE : 1000M OHMS MIN. AT 500V DC.
- CONTACT RESISTANCE : 30m OHMS MAX.
- OPERATING TEMPERATURE : -25°C TO +85°C.
- DURABILITY : 1500 CYCLES.

ORDER INFORMATION :

21 - 01 05 - 6 - * T

SERIES CODE | TYPE 05 | NUMBER OF POSITIONS | TIN PLATING ON SOLDER TAIL

CONTACT PLATING OPTIONS

- 1 : GOLD FLASH
- 2 : .000010" GOLD
- 3 : .000015" GOLD
- 5 : .000030" GOLD

TOLERANCE .0=±0.30 [.012] .00=±0.20 [.008] .000=±.XXX .0000=±. ANG.=±3°	DRAWER <i>SUE</i> CHECK <i>Katharina</i> APP'D <i>LJON</i> PRODUCT SPEC. —	 ASTRON TECHNOLOGY CORP. NAME IEEE 1394 CONNECTOR P.C.B. MOUNT, RIGHT ANGLE METAL SHIELD, FEMALE
UNITS : mm [inch]	DRAW NO. C621-0105	
SCALE NONE	SIZE A4	SHEET 1 OF 1
	REV. A	10004