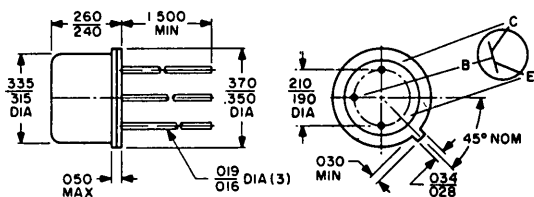


# rf power transistors

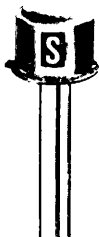
114

## SILICON NPN/RF

TYPE NUMBERS	CASE SIZE	RATED BREAKDOWN VOLTAGES			POWER OUT				C <sub>OB</sub> (pf)	f <sub>T</sub> (MHz) Min.
		V <sub>CB</sub>	V <sub>CE</sub>	V <sub>EB</sub>	@ V <sub>CE</sub>	@ f <sub>o</sub> (MHz)	@ P <sub>IE</sub> (W)	P <sub>O</sub> (W)		
2N2876	TO-60	80	60	4.0	28	50	2.0	10.0	20	200
2N3375	TO-60	65	40	4.0	28	400	1.0	3.0	12.0	500 Typ
2N3553	TO-5	65	40	4.0	28	175	.25	2.5	12.0	350
2N3632	TO-60	65	40	4.0	28	175	3.5	13.5	25.0	250
2N3733	TO-60	65	40	4.0	28	400	4.0	10.0	25.0	250
2N3866	TO-5	55	30	3.5	28	400	0.1	1.0	3.0	500
2N3924	TO-5	36	18	4.0	13.6	175	1.0	4.0	20.0	250
2N3926	TO-60	36	18	4.0	13.6	175	2.0	7.0	20.0	250
2N3927	TO-60	36	18	4.0	13.6	175	4.0	12.0	45.0	200
2N4012	TO-60	65	40	4.0	13.6	1000	1.0	2.5	10.0	350
2N4040	MT-72j	60	40	4.0	28	400	3.0	8.0	15.0	400
2N4041	MT-72j	60	40	4.0	28	400	1.0	3.3	8.0	400
2N4127	MT-72j	60	40	4.0	25	175	2.5	13.5	25.0	300
2N4128	MT-72j	60	40	4.0	25	175	6.0	24.0	45.0	200
2N4427	TO-5	40	20	2.0	12	175	0.1	1.0	4.0	500
2N4428	TO-5	55	35	3.5	28	500	.075	.75	3.5	700
2N4429	MT-72j	55	35	3.5	28	1000	.25	1.0	3.5	700
2N4430	MT-66	55	40	3.5	28	1000	.7	2.5	5.0	600
2N4431	MT-66	55	40	3.5	28	1000	1.15	5.0	10.0	600
2N4440	TO-60	65	40	4.0	28	400	1.7	5.0	12.0	500 Typ
2N4933	TO-60	70	35	4.0	24	70	3.5	20.0	85.0	200
2N5016	TO-60	65	30	4.0	28	400	5.0	15.0	25.0	500
2N5070	TO-60	65	30	4.0	28	30	.625	12.5	85	100
2N5071	TO-60	65	30	4.0	24	70	3.0	24.0	85	100
2N5090	TO-60	55	30	3.5	28	400	0.2	1.2	3.5	500
2N5102	TO-60	55	30	3.5	28	400	0.2	1.2	3.5	500
2N5108	TO-5	55	30	3.0	28	1000	.316	1.0	3.0	1200
2N5109	TO-5	40	20	3.0	28	1000	.32	1.0	3.5	1200
2N5421	TO-5	36	18	4.0	13.5	175	.125	1.0	5.0	300
2N5423	TO-60	36	18	4.0	13.5	175	1.25	5.0	25.0	300
2N5424	TO-60	36	18	4.0	13.5	175	4.1	13.0	45.0	250
2N5591	MT-	36	18	4.0	13.6	175	9.5	25.0	120.0	200
2N5641	MT-716	65	35	4.0	28	175	1.0	7.0	15.0	300
2N5642	MT-72e	65	35	4.0	28	175	2.8	20.0	35.0	250
2N5643	MT-72e	65	35	4.0	28	175	8.0	40.0	65.0	200



TO-5



TO-60

See Pg. 112 for outline drawing

# rf power transistors

116

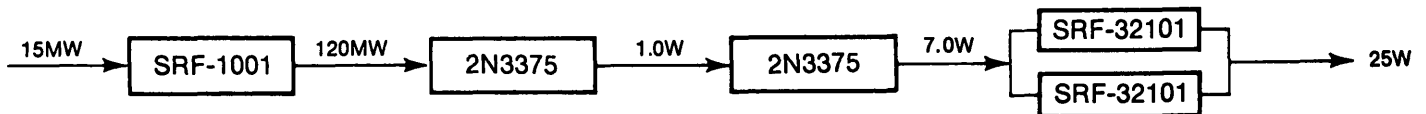
## SOLITRON RF AMPLIFIER KITS

Solitron R. F. Kits are available with matched devices offering the maximum in fabrication flexibility. Kits for both 12.5 and 28 volt systems are available. Solitron manufactures R. F. transistor kits for operation at frequencies up to 400 MHz. Kit components are available in all popular R. F. packages.

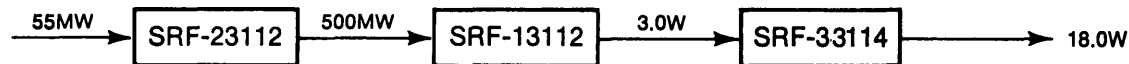
### 100 TO 175 MHz 28 VOLT SUPPLY



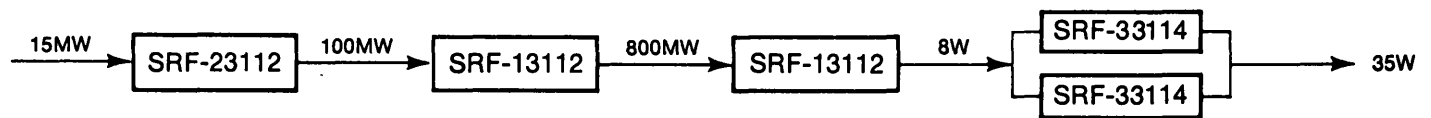
SRK-2001



SRK-2002

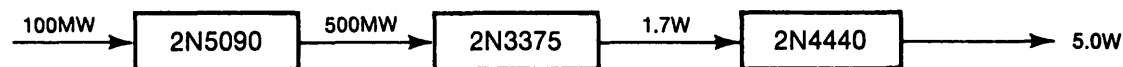


SRK-2005

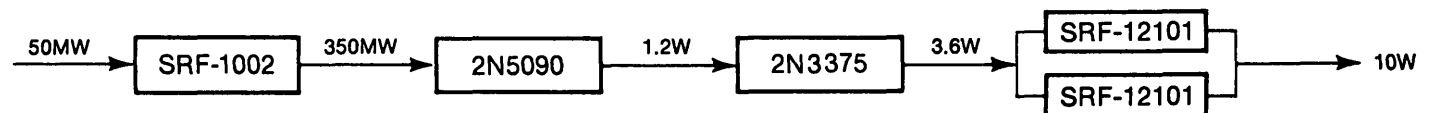


SRK-2006

### 400 MHz - 28V SUPPLY



SRK-2003



SRK-2004