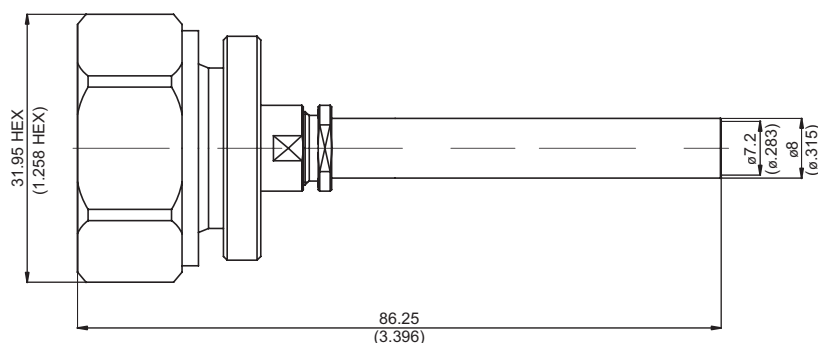


7/16-3300-0250

7/16 Plug Solder

50Ω



Parts	Material	Plating(Micro-inch)
Nut	Brass	Tin-Zinc-Copper-Alloy 100 Over Copper 50
Ferrule	Brass	Gold 5 Over Nickel 50 Over Copper 50
Contact Pin	Phosphor Bronze	Silver 150 Over Copper 50
Gasket	Silicon	
Retainer Ring	Brass	Tin-Zinc-Copper-Alloy 100 Over Copper 50
Insulator	Teflon	
Body	Brass	Tin-Zinc-Copper-Alloy 100 Over Copper 50
Coupling Nut	Brass	Tin-Zinc-Copper-Alloy 100 Over Copper 50

Weight: 110 g

Suitable Cables: Semi-rigid.250

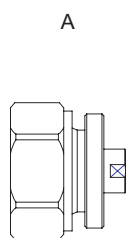
This part number complies with RoHS.

Notice: JYEBAO reserves the right to make modifications deemed appropriate.

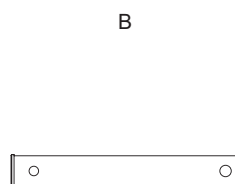
CABLE ASSEMBLY INSTRUCTION

7/16-3300-0250

JYE BAO CO., LTD.



BODY



FERRULE



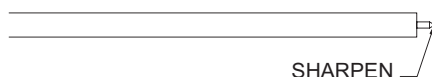
NUT

DIAGRAM

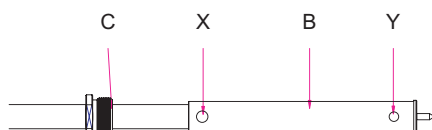
ASSEMBLY INSTRUCTION



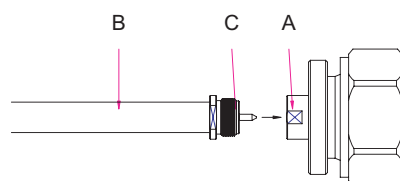
Step 1: STRIP AS SHOWN .



Step 2: SHARPEN CENTER CONDUCTOR TIP.



Step 5: SLIDE NUT " C " AND FERRULE " B " OVER CABLE AND SOLDER IN " X " AND " Y " .



Step 4: FINALLY SCREW " C " ON THE CONNECTOR BODY " A ".

This part number complies with RoHS.

Notice: JYEBAO reserves the right to make modifications deemed appropriate.