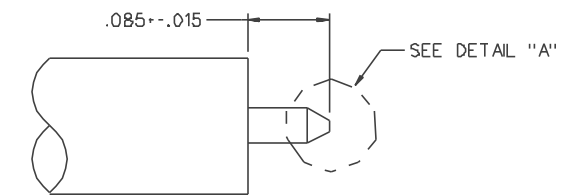
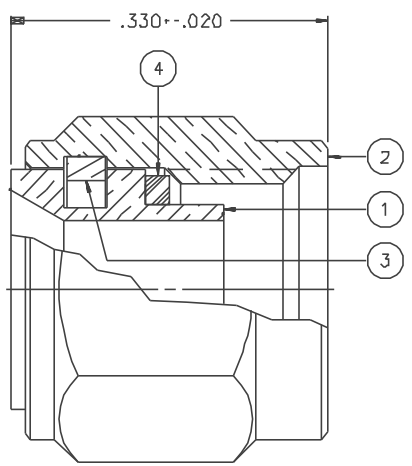


PART NUMBER	ITEM ① BODY	ITEM ② COUPLING NUT	ITEM ③ SPRING	ITEM ④ GASKET
142-0694-031	BRASS GOLD PL .00001 MIN OVER NICKEL PL .00005 MIN OVER COPPER PL .00005 MIN	BRASS GOLD PL .00001 MIN OVER NICKEL PL .00005 MIN OVER COPPER PL .00005 MIN	BERYLLIUM COPPER	NONE
142-0694-033	BRASS GOLD PL .00001 MIN OVER NICKEL PL .00005 MIN OVER COPPER PL .00005 MIN	BRASS GOLD PL .00001 MIN OVER NICKEL PL .00005 MIN OVER COPPER PL .00005 MIN	BERYLLIUM COPPER	SILICONE RUBBER
142-0694-036	BRASS NICKEL PL .0001 MIN OVER COPPER PL .00005 MIN	BRASS NICKEL PL .0001 MIN OVER COPPER PL .00005 MIN	BERYLLIUM COPPER	NONE

DRAWING NO. C - 142-0694-031/040			
0 REVISIONS			
ENGINEERING RELEASE			
01	11-22-88	EJR	12-1-88 ECO 23722
CHANGED: 335 VRMS WAS 500 VRMS, 250 VOLTS WAS 375 VOLTS, 670 VRMS WAS 1000 VRMS, 100 CYCLES WAS 500 CYCLES, -60 DB WAS -90 DB ADDED: 15.5 TO 18 GHz, EXCEPT 115° C HIGH TEMP. DELETED: .221+-.010			
02	02-26-91	DBB	2-28-91 ECO 24977
ADDED: P/N 142-0694-033, ITEM 4			
* REVISION NUMBER FOLLOWED BY AN ALPHA *			
* CHARACTER INDICATES DRAWING CLARIFICATION *			
* DATE ON PART NUMBER ADDITION ONLY *			
20	10-26-99	RH	ECN 46781

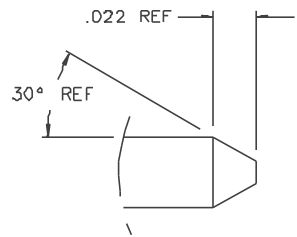


CABLE STRIP DIMENSIONS



NOTES:

- SPECIFICATIONS:
 - IMPEDANCE: 50 OHMS
 - FREQUENCY RANGE: 0-18.0 GHZ
 - VSWR: 1.035-.05F MAX (F IN GHZ)
 - WORKING VOLTAGE: 335 VRMS MAX AT SEA LEVEL
 - DIELECTRIC WITHSTANDING VOLTAGE: NOT APPLICABLE
 - INSULATION RESISTANCE: NOT APPLICABLE
 - CONTACT RESISTANCE:
 - CENTER CONTACT - INITIAL NOT APPLICABLE, AFTER ENVIRONMENTAL NOT APPLICABLE
 - OUTER CONDUCTOR - INITIAL 2.0 MILLIOHM MAX, AFTER ENVIRONMENTAL NOT APPLICABLE
 - BODY TO CABLE - 0.5 MILLIOHM MAX
 - CORONA LEVEL: 250 VOLTS MIN AT 70,000 FEET
 - INSERTION LOSS: .03 ✓ F MAX (F IN GHZ) AT 15.5 TO 18GHZ
 - RF LEAKAGE: -60 DB MIN AT 2 TO 3 GHZ
 - RF HIGH POTENTIAL WITHSTANDING VOLTAGE: 670 VRMS MIN AT 5 TO 7.5 MHZ



DETAIL "A"
20:1

CUSTOMER DRAWING

THIS DRAWING TO BE INTERPRETED PER ANSIZ 14.5M - 1982

"μSTATION"

COMPANY CONFIDENTIAL

- MECHANICAL:
- ENGAGE/DISENGAGE TORQUE: 2 INCH-POUNDS MAX
 - MATING TORQUE: 7-10 INCH-POUNDS
 - COUPLING PROOF TORQUE: 15 INCH-POUNDS MIN
 - COUPLING NUT RETENTION: 6D LBS MIN
 - CONTACT RETENTION: NOT APPLICABLE
 - CABLE ACCEPTABILITY: RG 402 DIA .141 SEMIRIGID
 - CABLE HEX CRIMP SIZE: NOT APPLICABLE
 - CABLE RETENTION: 6D LBS MIN AXIAL FORCE
 - DURABILITY: 100 CYCLES MIN

- ENVIRONMENTAL:
- (MEETS OR EXCEEDS THE APPLICABLE PARAGRAPH OF MIL-C-39012)
 - THERMAL SHOCK: MIL-STD-202, METHOD 107, CONDITION B, EXCEPT 115 C HIGH TEMP.
 - OPERATING TEMPERATURE: -65 DEG C TO 165 DEG C
 - CORROSION: MIL-STD-202, METHOD 101, CONDITION B
 - SHOCK: MIL-STD-202, METHOD 213, CONDITION I
 - VIBRATION: MIL-STD-202, METHOD 204, CONDITION D
 - MOISTURE RESISTANCE: MIL-STD-202, METHOD 106

TOLERANCE UNLESS OTHERWISE SPECIFIED	DRAWN BY EJ	DATE 9-14-88	299 Johnson Ave. P.O. Box 1732 Waseca, MN 56093-0832	
DECIMALS .XX	CHECKED BY	DATE	TITLE PLUG ASSEMBLY STRAIGHT CABLED SMA, RG 402	
.XXX	APPROVED BY TAK	DATE 11-28-88	CODE NO.	DRAWING NO. C - 142-0694-031/040
MATL	APPROVED BY RJB	DATE 11-28-88	SCALE 10:1	U/M INCH SHEET 2 OF 2
FINISH	RELEASE DATE	12-1-88		