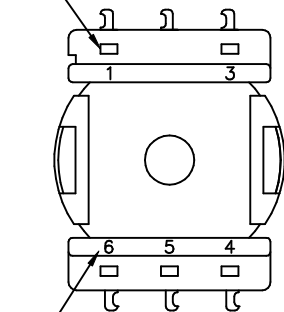
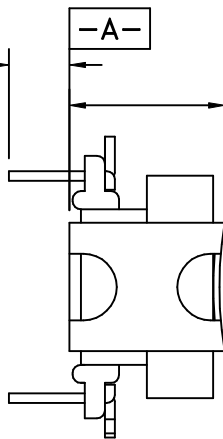


PART MUST INSERT FULLY TO SURFACE A IN RECOMMENDED GRID  
 .023 x .042(5)  
 [.58 x 1.07]



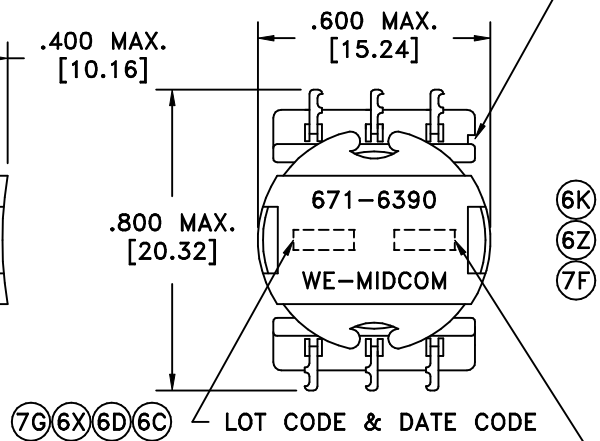
TERM. NO.'s FOR REF. ONLY

.110 MIN.  
 [2.79]



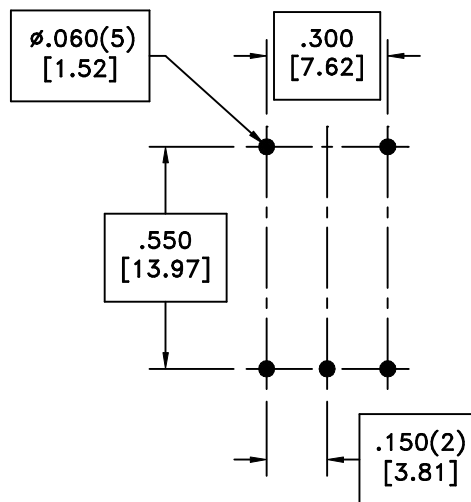
.400 MAX.  
 [10.16]

NOTCH LOCATES TERM. #1

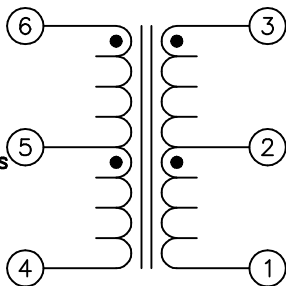


(7J)

SOLDER SUFFIX	CUSTOMER TERMINAL	RoHS	LEAD(Pb)-FREE
	Sn63%, Pb37%	No	No
LF3	Sn100%	Yes	Yes



(7F) RECOMMENDED P.C. PATTERN, COMPONENT SIDE



PRI 135 Ohms SEC RL = 100 Ohms

(7F) ELECTRICAL SPECIFICATIONS @ 25°C unless otherwise noted:

- (7A) IMPEDENCE: Designed to reflect 135 ±10% ohms on PRI with 100 ohms on SEC @1kHz.
- LONGITUDINAL BALANCE: 60dB min., 200 - 1000Hz; 40dB min. at 15kHz, Per FCC Part 68.
- D.C. RESISTANCE (@20°C): PRI, 16.0 - 19.5 ohms. SEC, 16.0 - 19.5 ohms.
- FREQUENCY RESPONSE: ±1.0dB, 100Hz - 112kHz, ±0.5dB typ.
- INSERTION LOSS: 1.25 ±0.25dB, 10kHz.
- DIELECTRIC RATING: 1000VAC, 1 minute tested by applying 1250VAC for 1 second between PRI-SEC. Meets or exceeds requirements of: CAN/CSA-C22.2 No.225 (M90); DOC's CS-03 (Issue 7); UL's UL1459, 2nd Ed. (1992); and FCC's Part 68 (58 FR 44907, Aug. 25, 1993).
- (6F)(6K)(6T)(6U)(6V) D.C. IN PRI: Balanced current only.
- (6P) INDUCTANCE: 200mH min., 1kHz, 1.0VAC, 1-3, Ls.
- LEAKAGE INDUCTANCE: 22 - 43uH, 0.5VAC, 10kHz, 1-3(tie 4+6), Ls.
- RETURN LOSS: 15dB typ., 100Hz - 100kHz (vs. 135 ohm); 32dB typ., 1kHz.
- URNS RATIO: (6-4):(3-1) = 1:1, ±1%.
- (7E) INTERWINDING CAPACITANCE: 66pF nom., 10kHz, 0.1VAC, 3-6, Cs.

DETAILS SUBJECT TO CHANGE

AGENCY NUMBER	
UL	E205930
CSA	LR61218

Unless otherwise specified:  
 Tolerances:  
 Angles: ±1°  
 Fractions: ±1/64  
 Decimals: ±.005[.13]

This drawing is dual dimensioned.  
 Dimensions in brackets are in millimeters.

DRAWING TITLE  
**TRANSFORMER**  
 DDS  
 eiSos p/n:  
 REVISIONS: SEE SHEET 1

**WE Midcom**  
 www.midcom-inc.com

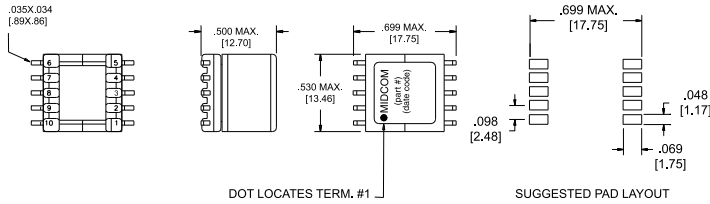
DRAWING NO. **671-6390/-LF3** (7J) REV. 7J 8/06

SCALE --- SHEET 2 OF 5

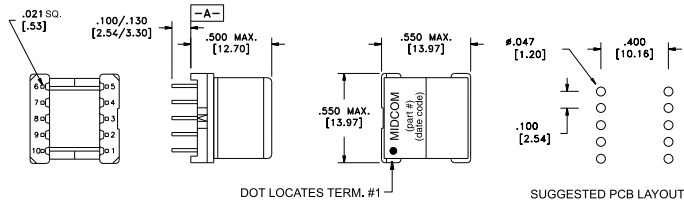
DWG.# 671-6390/-LF3

# Level One DDS recommendations

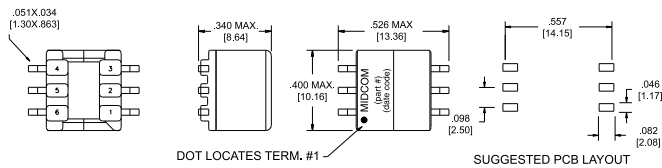
## EP13 - SMD



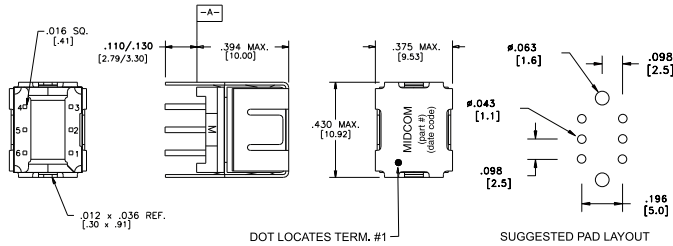
## EP13 - TH



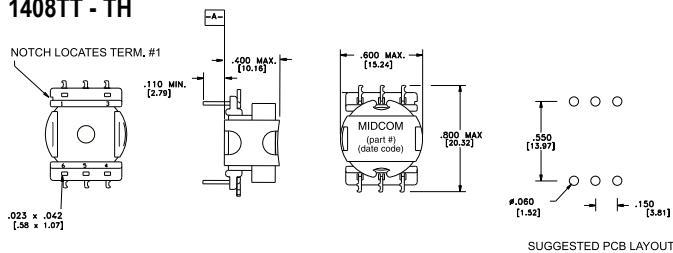
## EP7 - SMD



## EP7 - TH



## 1408TT - TH



## Features

- Compatible with Level One chip sets
- Good total harmonic distortion characteristics
- Optimized design for size and performance
- Customization available
- Volume production and automated lines
- For IC manufacturer approval status, contact Midcom
- 135 ohm line

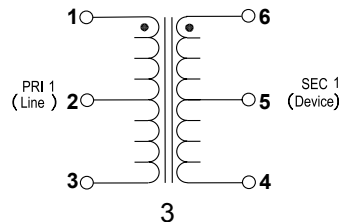
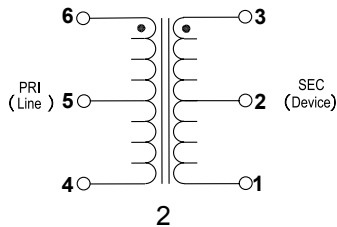
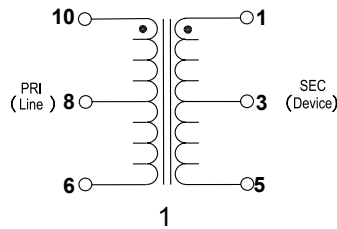
(Schematics on following page)

## Level One DDS recommendations (Continued)

Part Number	IC Number	Safety Agency	Mechanicals	Schematic
671-7937R	LXT400/456	UL1950	EP13-SMD	1
671-7936	LXT400/456	UL1950	EP13-TH	1
671-6390	LXT400/456	UL1459	1408TT-TH	2
671-7940R	LXT441	UL1950	EP13-SMD	1
671-7941	LXT441	UL1950	EP13-TH	1
671-7876R	LXT441	UL1459	EP7- SMD	3
671-7789	LXT441	UL1459	EP7-TH	3

### Features

- Compatible with Level One chip sets
- Good total harmonic distortion characteristics
- Optimized design for size and performance
- Customization available
- Volume production and automated lines
- For IC manufacturer approval status, contact Midcom
- 135 ohm line



Details subject to change. Contact your Midcom sales representative for additional information. Dimensions: in/mm. All tolerances are  $\pm .010/0,25$  and electrical specifications are @ 25°C unless otherwise specified.

11/14/05