

product: DELPHI PN 13733481
 material: CUFE2P
 surface: SN
 material thickness: 0,25 mm
 cross section [mm²]: 0,13

strip length: 4,30 mm
 cable type: FLMRY-A
 insulation Ø [mm]: 0,95 - 1,05
 seal:

**Uncontrolled
Copy**
For Information only!

conductor dimension					crimp dimension [mm]					
cable type	cross sect. [mm ²]	struct. n x d [mm]	insul. diam. [mm]	tear-out force [N]	core		insulation			
					height ± 0,03	width ± 0,10	height ± 0,10	width ± 0,10	height ± tol.	width ± tol.
FLMRY-A	0,13	7 x 0,15	1,00	50	0,90	1,15	1,40	1,40		

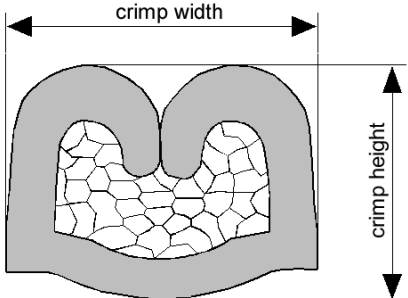
core:
 C-1.10-3.5-6-A
 DPN 10915395

insulation:
 IS-1.40-2.5-6-A
 DPN 10915466

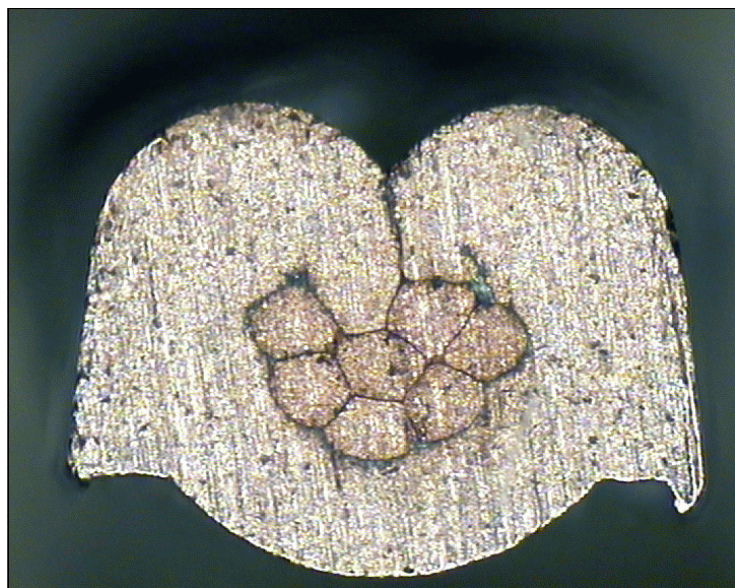
anvil:

two piece anvil:
 AC-1.10-3.75-A
 DPN 10915396
 AI-1.40-2.6-0.2-A
 DPN 10915465

The tear-out force is 50 N only for FLMRY-A 0,13 mm².



DELPHI PN 13733481



cable:
 $0,13 \text{ mm}^2 = 7 \times 0,15 \text{ mm}$

crimp height:
0,90 mm

crimp width:
1,15 mm