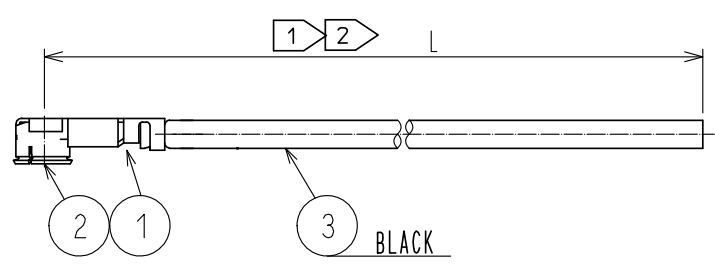


Oct.1.2019 Copyright 2019 HIROSE ELECTRIC CO., LTD. All Rights Reserved.
 In case of consideration for using Automotive equipment / device which demand high reliability, kindly contact our sales window correspondents.

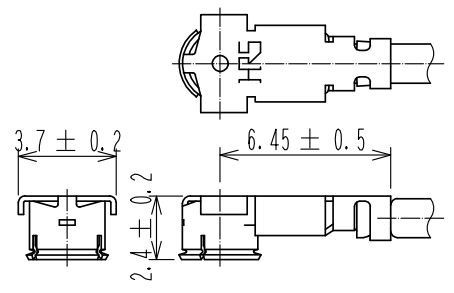


NOTE 1 We indicate the length of the harness on the last of product name. 'L' part.
2 Tolerance for 【L】

L (mm)	STANDARD TOLERANCE
35 ≤ L ≤ 200	± 4 mm
200 < L ≤ 500	± 8 mm
500 < L ≤ 1000	± 12 mm
1000 < L	± 1.5% mm

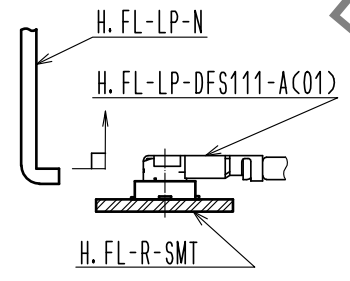
3. Specifications are subject to change without notice.

【 DIMENSIONS OF CONNECTOR 】



【 PRECAUTIONS FOR HANDLING 】

- ◆ Connector insertion and extraction
 - a. Connector shall be extracted vertically by specialised extraction JIG.
 Part No. : H.FL-LP-N (CL Code: CL331-0551-7)
 Never hold the cable when extracting the cable because it damages the connector.
 - b. Insert the connector as perpendicularly to the mating surface as possible by aligning the mating axes of both connectors. Do not excessively slant the connectors when inserting.



2	H. FL-LP CONTACT	CL331-0511-2		
1	H. FL-LP-DFS111-A(C01)	CL331-0507-5-01	3	1.5Dia. coaxial cable
NO.	PART NO.	CODE NO.	NO.	PART NO.

UNITS mm 	SCALE FREE 	COUNT 	DESCRIPTION OF REVISIONS		DESIGNED	CHECKED	DATE
			APPROVED : NK. NINOMIYA 16.11.08	DRAWING NO. EDC-373622-00-00			
HIROSE ELECTRIC CO., LTD.	CHECKED : NK. NINOMIYA 16.11.08	PART NO. H. FL-LP(CA)-FHSB-A-L 1					
	DESIGNED : KS. TAKAHASHI 16.11.08	CODE NO. CL321-5111-4-00					
	DRAWN : KS. TAKAHASHI 16.11.08						