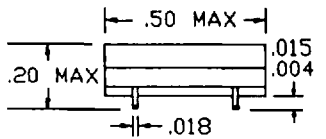
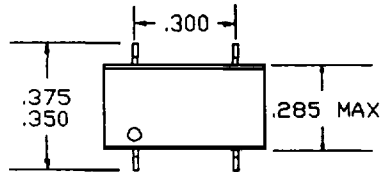


# bel / defining a degree of excellence

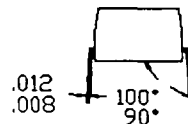
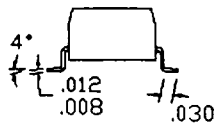
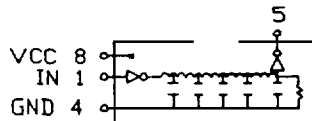
## FAST

## LOGIC DELAY MODULES 1 TAP LEADING EDGE CONTROL

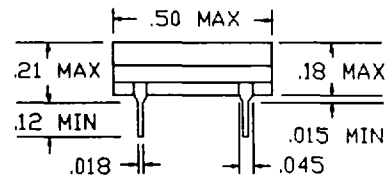
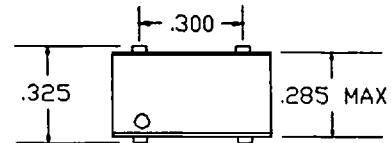
### S493 SERIES



COPLANARITY ± .002



### A493 SERIES



SMD PART NUMBER	THRU-HOLE PART NUMBER	TOTAL DELAY	RISE TIME
S493-0004-06	A493-0004-06	4 NS	3 NS
S493-0005-06	A493-0005-06	5 NS	3 NS
S493-0006-06	A493-0006-06	6 NS	3 NS
S493-0007-06	A493-0007-06	7 NS	3 NS
S493-0008-06	A493-0008-06	8 NS	3 NS
S493-0009-06	A493-0009-06	9 NS	3 NS
S493-0010-06	A493-0010-06	10 NS	3 NS
S493-0012-06	A493-0012-06	12 NS	3 NS
S493-0015-06	A493-0015-06	15 NS	3 NS
S493-0020-06	A493-0020-06	20 NS	3 NS
S493-0025-06	A493-0025-06	25 NS	3 NS
S493-0030-06	A493-0030-06	30 NS	3 NS
S493-0035-06	A493-0035-06	35 NS	3 NS
S493-0040-06	A493-0040-06	40 NS	3 NS
S493-0045-06	A493-0045-06	45 NS	3 NS
S493-0050-06	A493-0050-06	50 NS	3 NS
S493-0075-06	A493-0075-06	75 NS	3 NS
S493-0100-06	A493-0100-06	100 NS	3 NS

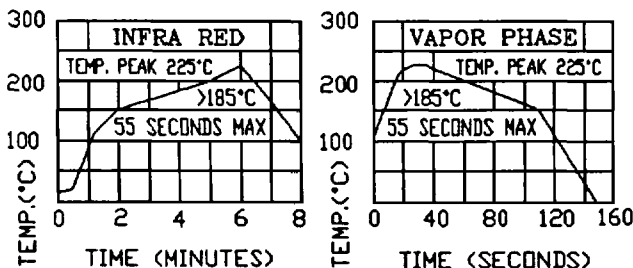
DELAYS MEASURED AT 1.5 V LEVELS ON LEADING EDGE WITH NO LOADS ON TAPS  
RISE & FALL TIMES MEASURED FROM 0.75 V TO 2.4 V

OTHER DELAYS AND TOLERANCES UPON REQUEST

#### TOLERANCES

DELAY TOLERANCES - ± 1 NS OR ± 3%  
WHICHEVER IS GREATER  
RISE/FALL TIMES - MAXIMUM

#### SMD SOLDERING TEMPERATURE PROFILES



#### TEST CONDITIONS

Ein	PULSE VOLTAGE	3.2 VOLTS
Trin	RISE TIME	3.0 NS (10%-90%)
PW	PULSE WIDTH	1.2 x TOTAL DELAY
PP	PULSE PERIOD	4 x PULSE WIDTH
Iccl	SUPPLY CURRENT	35 mA TYPICAL
Vcc	SUPPLY VOLTAGE	5.0 VOLTS
Ta	AMBIENT TEMPERATURE	25°C

#### ELECTRICAL CHARACTERISTICS

	MIN	MAX	UNIT
Vcc	4.75	5.25	V
Vih	2.0		V
Vil		0.8	V
Iik		-18	mA
Ioh		-1	mA
Iol		20	mA
Voh	2.7		V
Vol		0.5	V
Vik		-1.2	V
Iih		20	uA
Iil		-0.6	mA
Ios	-60	-150	mA
Icch		25	mA
Iccl		40	mA
Ta	0°	+70°	C
PW	40%		OF TOTAL DELAY
d	50%		MAXIMUM DUTY CYCLE
Tc	100*(25000/TOTAL DELAY)		PPM/C

#### DRIVE CAPABILITIES

Nh	LOGIC 1 FANOUT	10 TTL LOADS MAX
Nl	LOGIC 0 FANOUT	10 TTL LOADS MAX

#### NOTES:

- \* TRANSFER MOLDED FOR BETTER RELIABILITY
- \* COMPATIBLE WITH TTL AND DTL CIRCUITS
- \* TERMINALS: ELECTRO-TIN PLATE PHOSPHOR BRONZE
- \* PERFORMANCE WARRANTY IS LIMITED TO SPECIFIED PARAMETERS LISTED

|| SMD ONLY ||

- \* TAPE & REEL AVAILABLE - 24mm WIDE x 12mm PITCH 500 PIECES/13' REEL
- \* DESIGNED FOR VAPOR PHASE OR IR SOLDERING WITH TEMPERATURES BELOW 230°C FOR UP TO 90 SECONDS
- \* SPECIFICATIONS SUBJECT TO CHANGE WITHOUT NOTICE

CAT 29 R0-1/30/95

BEL FUSE INC. /198 VAN VORST ST./JERSEY CITY, NJ 07302/PH (201) 432-0463/FAX (201) 432-9542

\*BELFS020\*