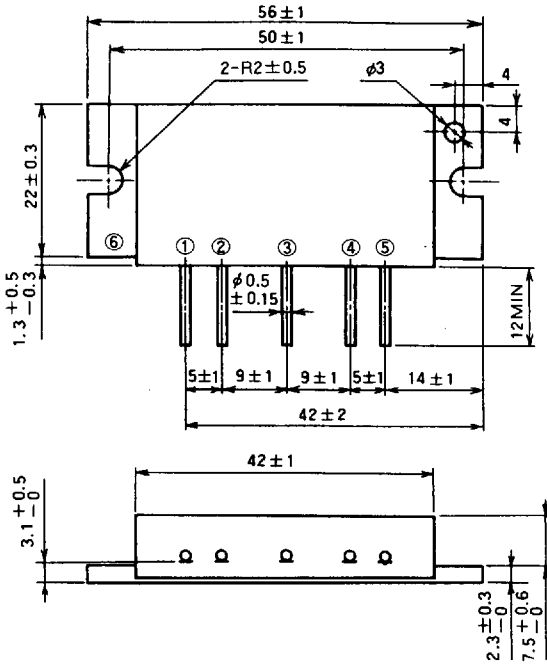


M68716

889-915MHz, 12.5V, 8W, FM MOBILE RADIO

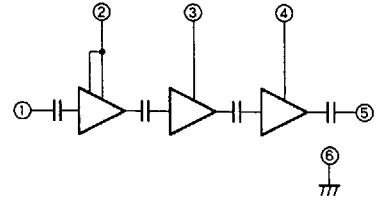
OUTLINE DRAWING

Dimensions in mm



H16

BLOCK DIAGRAM



PIN :

- ① Pin : RF INPUT
- ② Vcc1 : 1st. DC SUPPLY
- ③ Vcc2 : 2nd. DC SUPPLY
- ④ Vcc3 : 3rd. DC SUPPLY
- ⑤ Po : RF OUTPUT
- ⑥ GND : FIN

ABSOLUTE MAXIMUM RATINGS (Tc = 25°C unless otherwise noted)

Symbol	Parameter	Conditions	Ratings	Unit
Vcc	Supply voltage		17	V
Icc	Total current		4	A
P _{in(max)}	Input power	f=889 to 915MHz, Vcc1 ≤ 12.5V, Z _G =Z _L =50Ω	80	mW
P _{o(max)}	Output power	Z _G = Z _L = 50Ω	12	W
T _{c(OP)}	Operation case temperature	Z _G = Z _L = 50Ω	-30 to 110	°C
T _{stg}	Storage temperature		-40 to 110	°C

Note. Above parameters are guaranteed independently.

ELECTRICAL CHARACTERISTICS (Tc = 25°C unless otherwise noted)

Symbol	Parameter	Test conditions	Limits		Unit
			Min	Max	
f	Frequency range	Vcc1 = Vcc2 = Vcc3 = 12.5V P _{in} = 50mW Z _G = Z _L = 50Ω	889	915	MHz
P _o	Output power		8		W
η _T	Total efficiency		35		%
2fo	2nd. harmonic				dBc
ρ _{in}	Input VSWR			2.8	-
-	Load VSWR tolerance	Vcc2 = Vcc3 = 15.2V, P _{in} = 50mW, P _o = 8W (Vcc1 : controlled) Load VSWR=20:1 (All phase), 2sec. Z _G = 50Ω	No degradation or destroy		-

Note. Above parameters, ratings, limits and conditions are subject to change.