

**THIS PRODUCT MANUFACTURED WITH LEAD-FREE PROCESSING**

**DESIGNED & DIMENSIONED IN MILLIMETERS [INCHES]**

DO NOT SCALE FROM THIS PRINT

**292XX-J-C-XX-ST-CXX**

SERIES  
 292PB: 292 PLATED BRASS  
 292PS: 292 PASSIVATED STAINLESS STEEL

GENDER  
 -J: JACK

TYPE  
 -C: CABLE

TERMINATION  
 \* -C23: CCA-023-X CABLE  
 \* -C47: CCA-047-X CABLE  
 \* -CA7: CCA-405-X CABLE  
 \* -CA9: CCA-402-X CABLE  
 \* -CS3: MWC-2350-01 CABLE  
 \* -CS5: MWC-2550-01 CABLE (SEE TABLE 2)

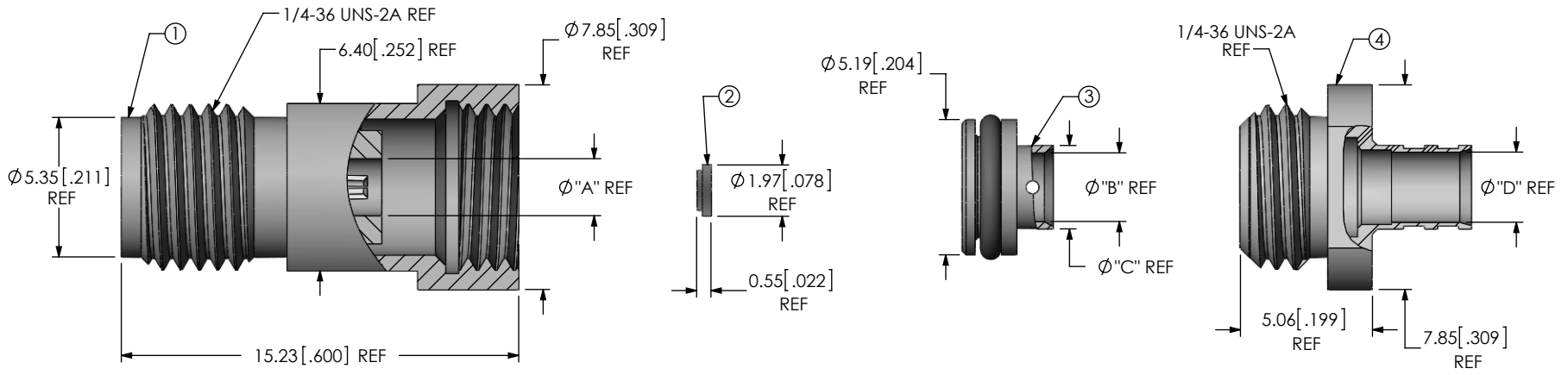
ORIENTATION  
 -ST: STRAIGHT

PLATING SPECIFICATION  
 -HH: 30µ" GOLD CENTER CONTACT, 30µ" GOLD OUTER CONTACT, 3µ" GOLD CABLE BODY  
 -HG: 30µ" GOLD CENTER CONTACT, 10µ" GOLD OUTER CONTACT, 3µ" GOLD CABLE BODY (-HH, -HG AVAILABLE ONLY WITH 292PB)  
 -HP: 30µ" GOLD CENTER CONTACT, PASSIVATED OUTER CONTACT, 3µ" GOLD CABLE BODY (-HP: AVAILABLE ONLY WITH 292PS) (SEE TABLE 1)

\*= NOT TOOLED

**TABLE 1**

ITEM	COMPONENT	-HH	-HG	-HP
1	SUB ASSEMBLY (SEE TABLE 2)	SUB-292PB-J-C-HH-ST-CXX	SUB-292PB-J-C-HG-ST-CXX	SUB-292PS-J-C-HP-ST-CXX
2	INSULATOR (SEE TABLE 2)	292-ST-INS-CS3		
3	SUB CABLE BODY (SEE TABLE 2)	SUB-292-C-F-ST-CXX-CBDY	SUB-292-C-F-ST-CXX-CBDY	SUB-292-C-F-ST-CXX-CBDY
4	BODY (SEE TABLE 2)	292PB-C-N-ST-CXX-BDY	292PB-C-N-ST-CXX-BDY	292PS-C-P-ST-CXX-BDY



**TABLE 2**

TERMINATION	"A"	"B"	"C"	"D"	SUB-292XX-J-C-XX-ST-CXX	SUB-292-C-X-ST-CXX-CBDY	292XX-C-X-ST-CXX-BDY	292-ST-INS-CS3
* -C23	1.60 [0.063]	0.70 [0.028]	2.00 [0.079]	2.20 [0.087]	SUB-292XX-J-C-XX-ST-C23	SUB-292-C-X-ST-C23-CBDY	292XX-C-X-ST-C47-BDY	292-ST-INS-CS3
* -C47	1.60 [0.063]	1.30 [0.051]	2.00 [0.079]	2.20 [0.087]	SUB-292XX-J-C-XX-ST-C47	SUB-292-C-X-ST-C47-CBDY	292XX-C-X-ST-C47-BDY	292-ST-INS-CS3
* -CA7	2.17 [0.085]	2.30 [0.091]	3.10 [0.122]	3.30 [0.130]	SUB-292XX-J-C-XX-ST-CA7	SUB-292-C-X-ST-CA7-CBDY	292XX-C-X-ST-CA7-BDY	292-ST-INS-CS3
* -CA9	2.925 [0.1152]	3.78 [0.149]	4.25 [0.167]	3.68 [0.145]	SUB-292XX-J-C-XX-ST-CA9	SUB-292-C-X-ST-CA9-CBDY	292XX-C-X-ST-CA9-BDY	N/A
-CS3	2.188 [0.0861]	2.63 [0.104]	3.20 [0.126]	2.69 [0.106]	SUB-292XX-J-C-XX-ST-CS3	SUB-292-C-X-ST-CS3-CBDY	292XX-C-X-ST-CA7-BDY	292-ST-INS-CS3
* -CS5	2.17 [0.085]	2.00 [0.079]	3.10 [0.122]	3.30 [0.130]	SUB-292XX-J-C-XX-ST-CS5	SUB-292-C-X-ST-CS5-CBDY	292XX-C-X-ST-CA7-BDY	292-ST-INS-CS3

- NOTES:
- ① REPRESENTS A CRITICAL DIMENSION.
  - PRODUCT TO BE PACKAGED PER PACKING STANDARD CO-HD-WI-3040-M. TRAY: TY-SMA001-1 COVER: TY-SMA001-2 100 PARTS PER TRAY (1 PART PER POCKET).
  - SUB CABLE BODY (ITEM 3) AND INSULATOR (ITEM 2) TO BE PACKAGED SEPARATELY.
  - BODY (ITEM 4) TO BE INSTALLED ON SUB ASSEMBLY (ITEM 1), LOCKED BY HAND (2-3 IN-LBS RECOMMENDED).

UNLESS OTHERWISE SPECIFIED, DIMENSIONS ARE IN MILLIMETERS. TOLERANCES ARE:  
 DECIMALS ANGLES  
 X.X: ±0.3 [01] 5°  
 X.XX: ±0.13 [005]  
 X.XXX: ±0.051 [0020]

**PROPRIETARY NOTE**  
 THIS DOCUMENT CONTAINS INFORMATION CONFIDENTIAL AND PROPRIETARY TO SAMTEC, INC. AND SHALL NOT BE REPRODUCED OR TRANSFERRED TO OTHER DOCUMENTS OR DISCLOSED TO OTHERS OR USED FOR ANY PURPOSE OTHER THAN THAT WHICH IT WAS OBTAINED WITHOUT THE EXPRESSED WRITTEN CONSENT OF SAMTEC, INC.

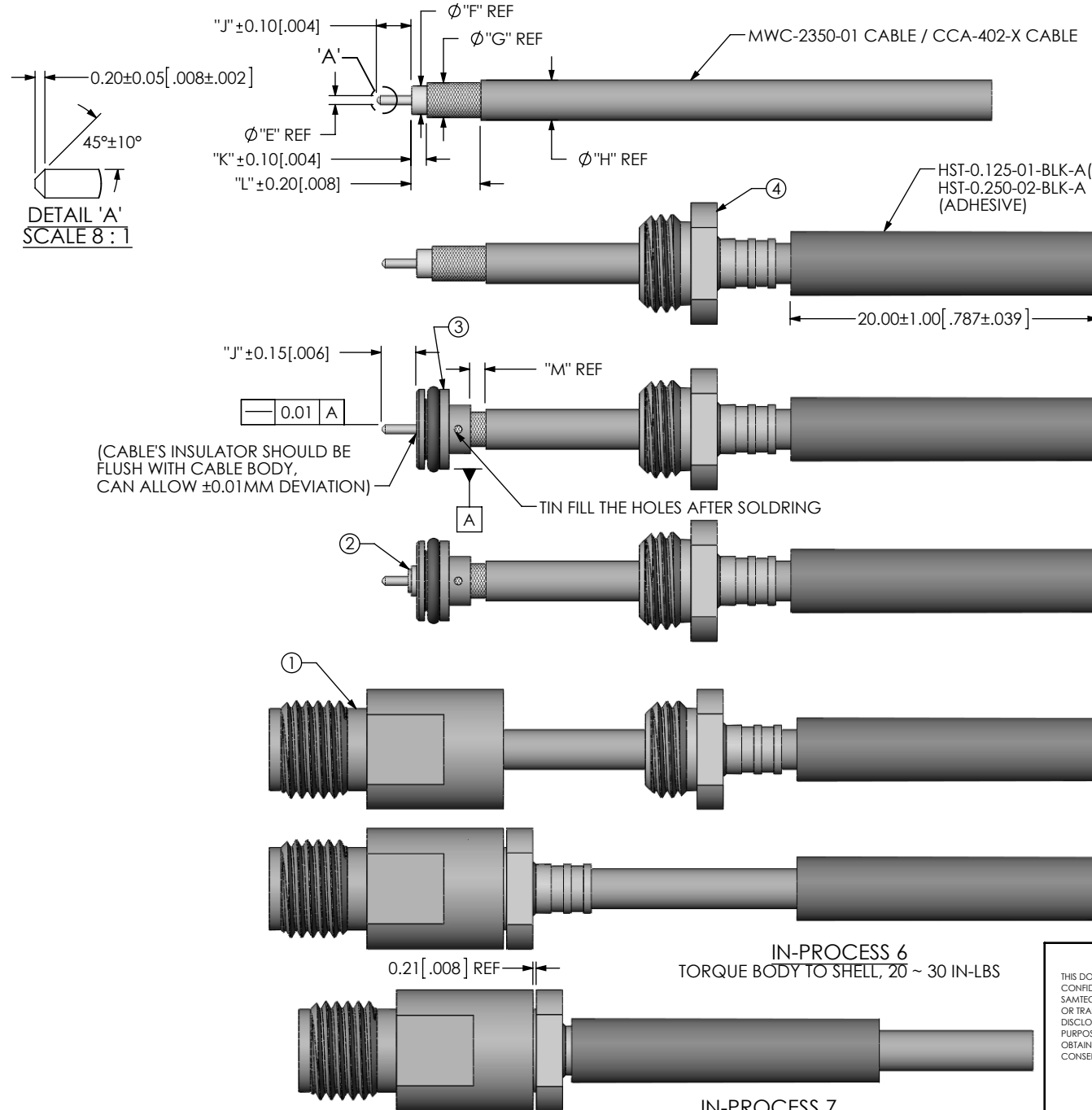


520 PARK EAST BLVD., NEW ALBANY, IN 47150  
 PHONE: 812-944-6733 FAX: 812-948-5047  
 e-Mail: info@SAMTEC.com code 55322

MATERIAL: DO NOT SCALE DRAWING SHEET SCALE: 4:1  
 SHELL, INSERT, CABLE BODY: BRASS OR STAINLESS STEEL  
 SOCKET & REAR SOCKET: BeCu  
 INSULATOR: PCTFE OR ULTEM-1000  
 INNER PIN: BRASS

DRAWING: 292 ST JACK FOR C23, C47, CA7, CA9, CS3, CS5 CABLE  
 DWG. NO. **292XX-J-C-XX-ST-CXX**  
 BY: ALVIN W 09/14/2012 SHEET 1 OF 2

TABLE 3								
STYLE	"E"	"F"	"G"	"H"	"J"	"K"	"L"	"M"
-CS3	0.58 [0.023]	1.85 [0.073]	2.25 [0.089]	2.59 [0.102]	2.25 [0.089]	1.00 [0.039]	4.50 [0.177]	1.00 [0.039]
-CA9	0.92 [0.036]	2.98 [0.117]	3.58 [0.141]	N/A	1.80 [0.071]	2.05 [0.081]	N/A	N/A



IN PROCESS 1  
STRIPPING AND CHAMFER  
(NO TINNED)

IN PROCESS 2  
ADD CABLE BODY & HEAT SHRINK

IN PROCESS 3  
ADD SUB CABLE BODY  
SOLDER CABLE TO CABLE BODY

IN PROCESS 4  
ADD INSULATOR  
(THIS STEP IS NOT USED FOR -CA9 OPTION)

IN-PROCESS 5  
ADD SUB ASSEMBLY

IN-PROCESS 6  
TORQUE BODY TO SHELL, 20 ~ 30 IN-LBS

IN-PROCESS 7  
APPLY HEAT TO SHRINK TUBING

PROPRIETARY NOTE  
THIS DOCUMENT CONTAINS INFORMATION  
CONFIDENTIAL AND PROPRIETARY TO  
SAMTEC, INC. AND SHALL NOT BE REPRODUCED  
OR TRANSFERRED TO OTHER DOCUMENTS OR  
DISCLOSED TO OTHERS OR USED FOR ANY  
PURPOSE OTHER THAN THAT WHICH IT WAS  
OBTAINED WITHOUT THE EXPRESSED WRITTEN  
CONSENT OF SAMTEC, INC.

DO NOT SCALE DRAWING

SHEET SCALE: 5:2



520 PARK EAST BLVD, NEW ALBANY, IN 47150  
PHONE: 812-944-6733 FAX: 812-948-5047  
e-Mail: info@SAMTEC.com code 55322

DESCRIPTION:  
292 ST JACK FOR C23, C47, CA7, CA9, CS3, CS5 CABLE

DWG. NO.  
**292XX-J-C-XX-ST-CXX**

BY: ALVIN W 09/14/2012 SHEET 2 OF 2