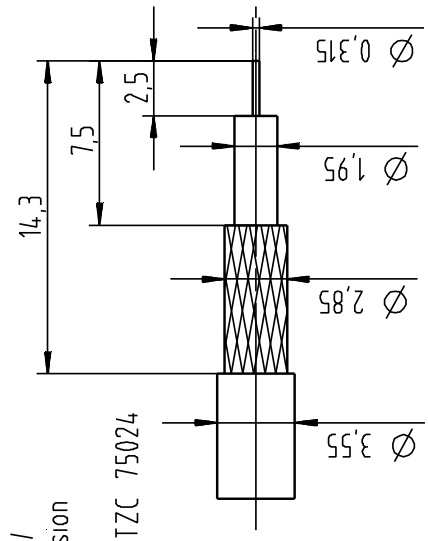
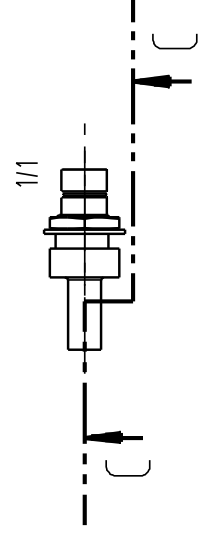
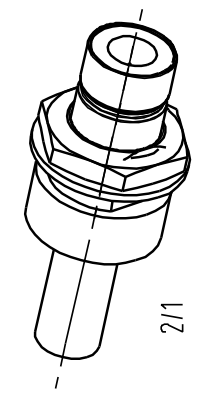


Kabelzuschnitt /
Stripping dimension



Kabel / cable: TZA 75024



fixed at galv		recommended		work piece edges: DIN ISO 13715		mark piece edges: DIN ISO 13715		Version V6.1	
yes	no	yes	no	critical dimensions to be checked at acceptance		critical dimensions to be checked at acceptance		design dimensions	part volume
		nr.: Schuetting		ISO 2768		ISO 2768		V :	A :
pieces:		IMS CONNECTOR SYSTEMS		general tolerance		general tolerance		scale:	part surface
				mH		mH		5:1	mm ²
				date		date		Assembly instruction: M-200	
				02.05.05		02.05.05		Stripping dimension:	
				checked		checked		75 Ohm SMZ	
				Norm		Norm		SMZ-Kabelstecker	
				04.5445		04.5445		SMZ-Cable mount plug	
design	J	ZG neu erstellt	08.12.06	Mayer				3951.11.1412.23'	
design	I	75 Ohm SMZ hinzu	27.07.06	Mayer				Rev. J	
design	H	0F-Nr.6 in	24.07.06	Mayer					
design	Q	Anpass. an Z370	13.07.06	Mayer					
design	F	Mutter und Scheibe	04.07.06	Mayer					
nr.	rev.	alteration	date	name					