

product: DELPHI PN 13733480
 material: CUNISI
 surface: F.SN3
 material thickness: 0,25 mm
 cross section [mm²]: 0,13

strip length: 3,60 mm
 cable type: FLMU142Y
 insulation \varnothing [mm]: 0,81 - 0,95
 seal:

**Uncontrolled
Copy**
For Information only!

conductor dimension					crimp dimension [mm]						
cable type	cross sect. [mm ²]	struct. n x d [mm]	insul. diam. [mm]	tear-out force [N]	core		insulation				
					height \pm 0,03	width \pm 0,10	height \pm 0,10	width \pm 0,10	height \pm tol.	width \pm tol.	
FLMU142Y	0,13	7 x 0,15	0,88	50	0,80	1,30	1,35	1,50			

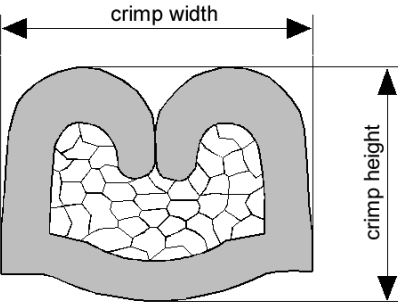
core:
 C-1.25-2.5-8-A
 DPN 10915291

insulation:
 IS-1.60-2.5-8
 DPN 10784535

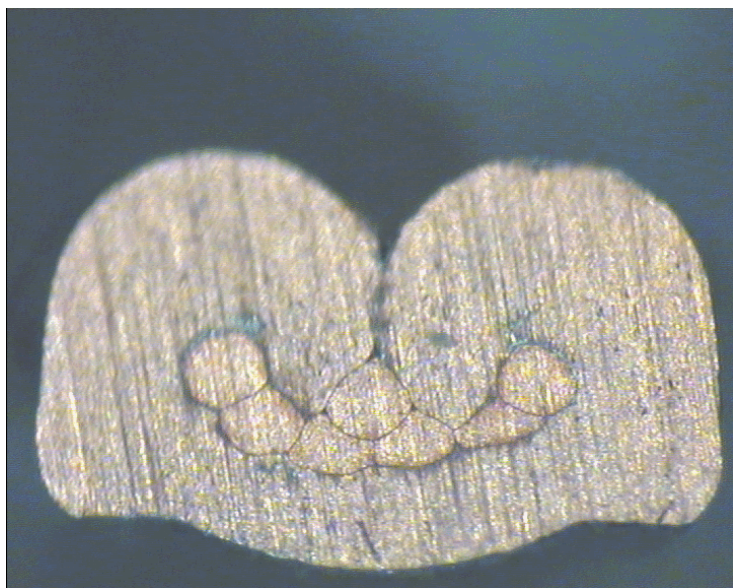
anvil:

two piece anvil:
 AC-1.25-2.75
 DPN 10806607
 AI-1.60-3.8-0.2
 DPN 10915292

The tear-out force is 50 N only for FLMU142Y 0,13 mm².



DELPHI PN 13733480



cable:
 $0,13 \text{ mm}^2 = 7 \times 0,15 \text{ mm}$

crimp height:
0,80 mm

crimp width:
1,30 mm