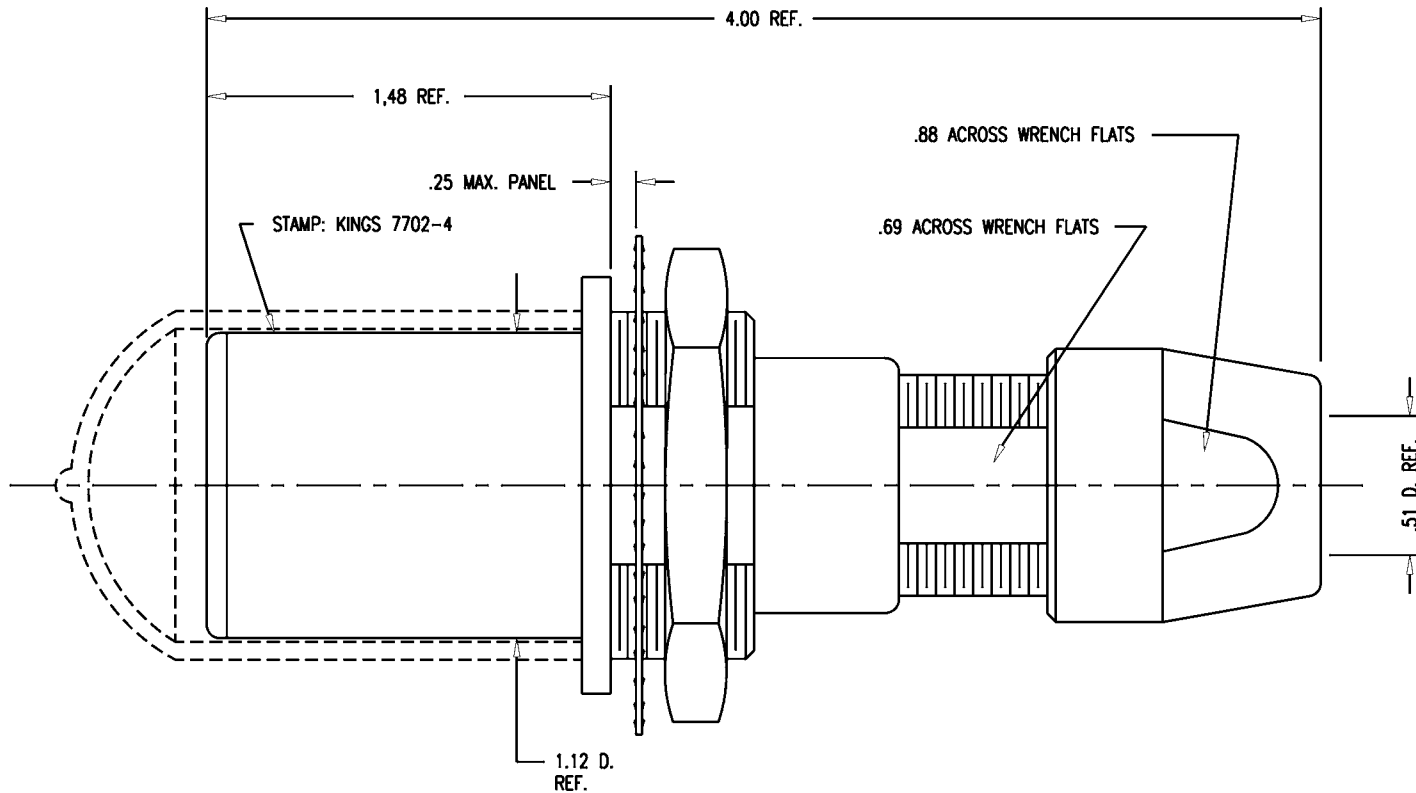


DASH NO.	M CODE	MADE FROM
----------	--------	-----------

GSD

7702-4

REVISIONS	
ISSUE	CHANGES
0	ER 35430 KH 04/10/95
1	CN 37238 D KH 02/03/97



NOTES:

1. FOR USE WITH 700 CABLE GROUP.
2. FOR CABLING INSTRUCTIONS SEE KAI-8010.
3. FOR CABLE TRIMMING USE KTJ-300 AND KTD-300.
4. FOR CRIMPING USE DIE SIZE 2040.

5. MATERIALS:

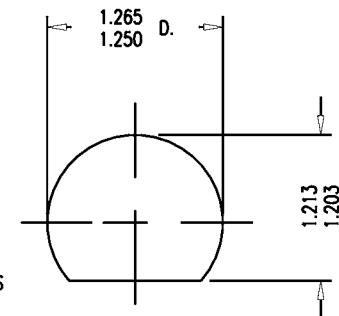
- INSULATORS-TEFLON, ASTM-D-4894
- LOCKWASHER-SPRING STEEL, PER ASTM A682
- GASKETS-SILICONE RUBBER, ZZ-R-765
- CAP-VINYL
- K-GRIP SLEEVE-COMMERCIAL BRONZE, ASTM-B-135
- CENTER CONTACT } BER. COP., ASTM-B-196
- OUTER CONTACT SPRING }
- INSERT
- ALL OTHER METAL PARTS-BRASS, ASTM-B16

6. FINISHES:

- CENTER CONTACT } GOLD PLATE PER MIL-G-45204
- OUTER CONTACT SPRING }
- LOCKWASHER }
- NUTS } KINGS TARNISH RESISTANT NICKEL FINISH (TR-5)
- COLLET }
- BODIES }
- ALL OTHER METAL PARTS-SILVER PLATE PER QQ-S-365

7. ELECTRICAL CHARACTERISTICS:

- NOMINAL IMPEDANCE: 75 OHMS
- FREQUENCY RANGE: DC-500 MHZ
- VOLTAGE BREAKDOWN: CENTER CONDUCTOR/INNER GROUND: 1500 VRMS
- INNER GROUND/OUTER GROUND: 500 VRMS



GSD

MOUNTING HOLE

KAM5521

SCALE 2:1

APPROX SURFACE AREA

USED ON

REF: KP-8022-704-400

JK, BKHD, TRI-LOC,
SERIAL DIGITAL

DRAWN KH DATE 04/10/95

DESIGN DW DATE 04/11/95

APPR. DATE

KINGS
ELECTRONICS CO., INC.
TUCKAHOE, NEW YORK 10707

7702-4