



SUCOceed™ PASSIVE SYSTEM COMPONENTS

BIAS TEES

Typically in combination with a Power Supply Unit (PSU), Bias Tees can be used for remote powering of RF repeaters, tower-mounted amplifiers or other bi-directional amplifiers in a wide frequency band.



Features

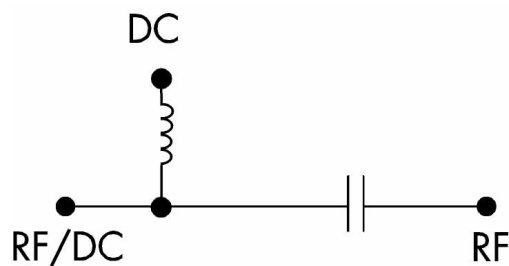
- For single- and multi-band applications
- 100 W average RF power handling
- Low RF insertion loss
- Optional N or DIN 7/16 RF connectors
- BNC connector for DC input
- Connectors silverplate finished to QQ-S-365, CL 1A for maximum electrical continuity
- High reliability

Specifications

Frequency range	MHz	800 - 2200	1700 - 2500
RF power handling: average peak	W kW		100 1.0
Insertion loss	dB		< 0.15
VSWR	dB		< 1.35:1
DC voltage	V		< 50
DC current	A		< 3
Impedance (nominal)	Ω		50
Temperature	$^{\circ}\text{C}$		-40 to +85
Connectors RF RF/DC DC			N or DIN 7/16 male N or DIN 7/16 female BNC female
Dimensions (W x H X D)	mm/inch	103 x 73 x 18 / 4,06 x 2.87 x 0.71	

Ordering Information

Article No.	Type No.	Description
22664702	9561.52.0058	Bias Tee, 1700 to 2500 MHz, N / BNC
22664703	9561.52.0059	Bias Tee, 1700 to 2500 MHz, 7/16 / BNC
22664704	9561.52.0060	Bias Tee, 800 to 2200 MHz, N / BNC
22664705	9561.52.0061	Bias Tee, 800 to 2200 MHz, 7/16 / BNC



Schematic drawing



HUBER+SUHNER MRS GmbH
 31162 Bad Salzdetfurth/Germany
 Phone +49 (0) 50 63 907 100
 Fax +49 (0) 50 63 907 101
 E-Mail info.mrs@hubersuhner.com
 Web www.hubersuhner.com

Waiver

While the information contained in this catalog has been carefully compiled to the best of our present knowledge, it is not intended as representation or warranty of any kind on our part regarding the fitness of the products concerned for any particular use or purpose and neither shall any statement contained herein be construed as a recommendation to infringe any industrial property rights or as a license to use any such rights. The fitness of each product for any particular purpose must be checked beforehand with our specialists.