

Circuit breaker 0.25 A A-release 0.18...0.25 A, N-release 5.2 A, for transformer protection, screw connection, standard switching capacity



Product brand name	SIRIUS
Product designation	Circuit breaker
Design of the product	for transformer protection
Product type designation	3RV6

General technical data	
Size of the circuit-breaker	S00
Power loss [W] total typical	5 W
Insulation voltage with degree of pollution 3 rated value	690 V
Protection class IP	
<ul style="list-style-type: none"> <li>on the front</li> <li>of the terminal</li> </ul>	IP20 IP20
Shock resistance	
<ul style="list-style-type: none"> <li>acc. to IEC 60068-2-27</li> </ul>	25 g / 11 ms

Ambient conditions	
Installation altitude at height above sea level	
<ul style="list-style-type: none"> <li>maximum</li> </ul>	2 000 m
Ambient temperature	
<ul style="list-style-type: none"> <li>during operation</li> </ul>	-20 ... +60 °C

• during transport	-50 ... +80 °C
Relative humidity during operation	10 ... 95 %
<b>Main circuit</b>	
<b>Number of poles for main current circuit</b>	3
<b>Adjustable pick-up value current of the current-dependent overload release</b>	0.18 ... 0.25 A
<b>Operating voltage</b>	
• rated value	690 V
• at AC-3 rated value maximum	690 V
<b>Operating frequency rated value</b>	50 ... 60 Hz
<b>Operating current rated value</b>	0.25 A
<b>Operating current</b>	
• at AC-3	
— at 400 V rated value	0.25 A
<b>Operating frequency</b>	
• at AC-3 maximum	15 1/h
<b>Protective and monitoring functions</b>	
<b>Trip class</b>	CLASS 10
<b>Design of the overload release</b>	thermal
<b>Operational short-circuit current breaking capacity (Ics) at AC</b>	
• at 400 V rated value	100 kA
<b>Maximum short-circuit current breaking capacity (Icu)</b>	
• at AC at 400 V rated value	100 kA
<b>Response value current</b>	
• of instantaneous short-circuit trip unit	5.2 A
<b>Short-circuit protection</b>	
<b>Product function Short circuit protection</b>	Yes
<b>Design of the short-circuit trip</b>	magnetic
<b>Installation/ mounting/ dimensions</b>	
<b>Mounting position</b>	any
<b>Mounting type</b>	screw and snap-on mounting onto 35 mm standard mounting rail according to DIN EN 60715
<b>Height</b>	97 mm
<b>Width</b>	45 mm
<b>Depth</b>	96 mm
<b>Required spacing</b>	
• for grounded parts	
— forwards	0 mm
— Backwards	0 mm
— upwards	50 mm

- at the side
- downwards

30 mm  
50 mm

## Connections/ Terminals

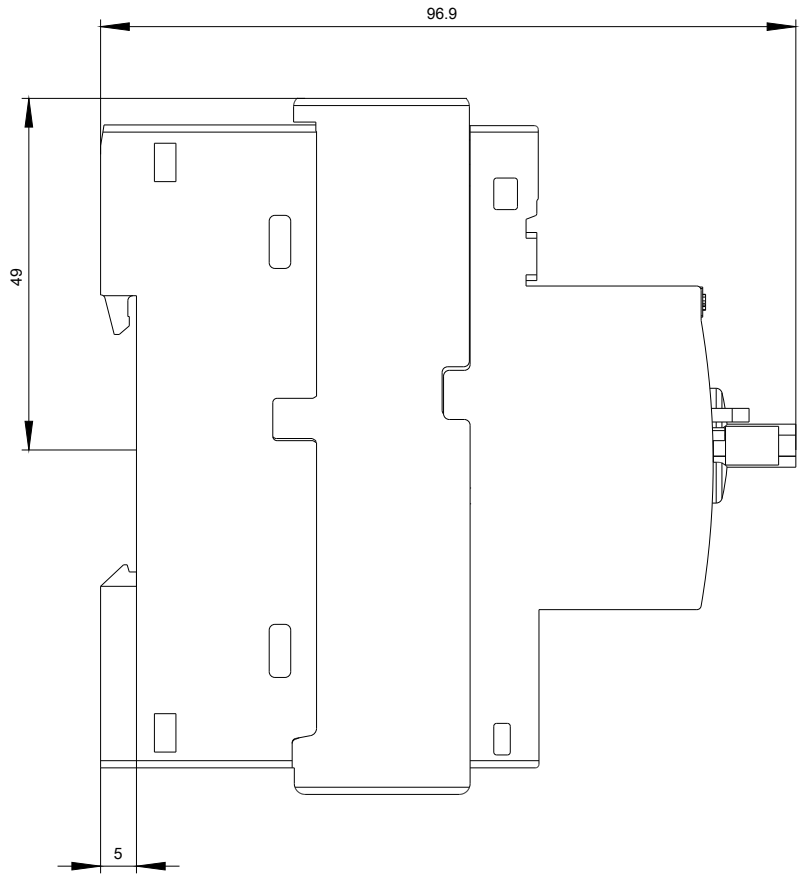
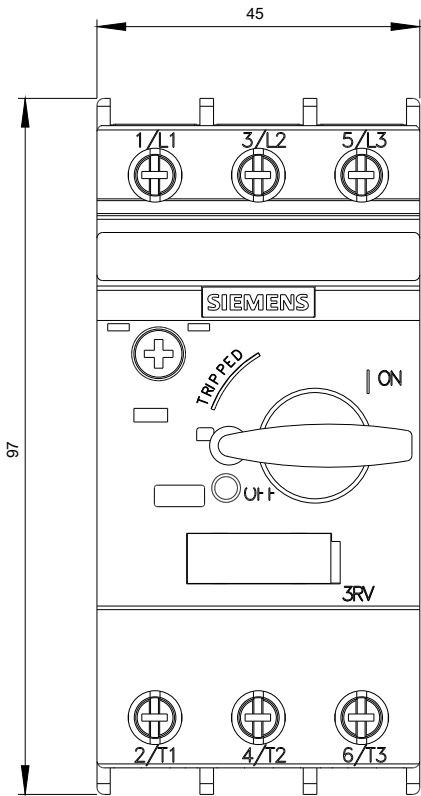
<b>Type of electrical connection</b>	
<ul style="list-style-type: none"> <li>• for main current circuit</li> </ul>	screw-type terminals
<b>Arrangement of electrical connectors for main current circuit</b>	Top and bottom
<b>Type of connectable conductor cross-sections</b>	
<ul style="list-style-type: none"> <li>• for main contacts           <ul style="list-style-type: none"> <li>— single or multi-stranded</li> <li>— finely stranded with core end processing</li> </ul> </li> <li>• at AWG conductors for main contacts</li> </ul>	2x (0,75 ... 2,5 mm <sup>2</sup> ), 2x 4 mm <sup>2</sup> 2x (0.5 ... 1.5 mm <sup>2</sup> ), 2x (0.75 ... 2.5 mm <sup>2</sup> ) 2x (18 to 12), 2x (20 to 16)
<b>Tightening torque</b>	
<ul style="list-style-type: none"> <li>• for main contacts with screw-type terminals</li> </ul>	0.8 ... 1.2 N·m

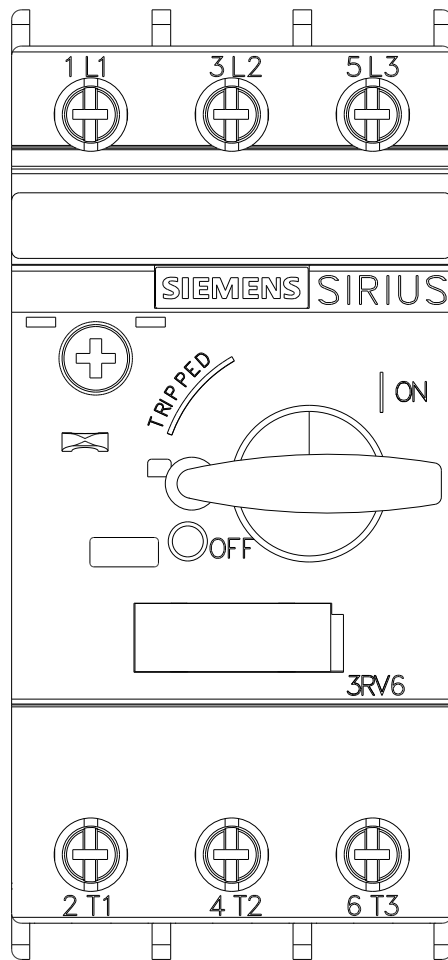
## Certificates/ approvals

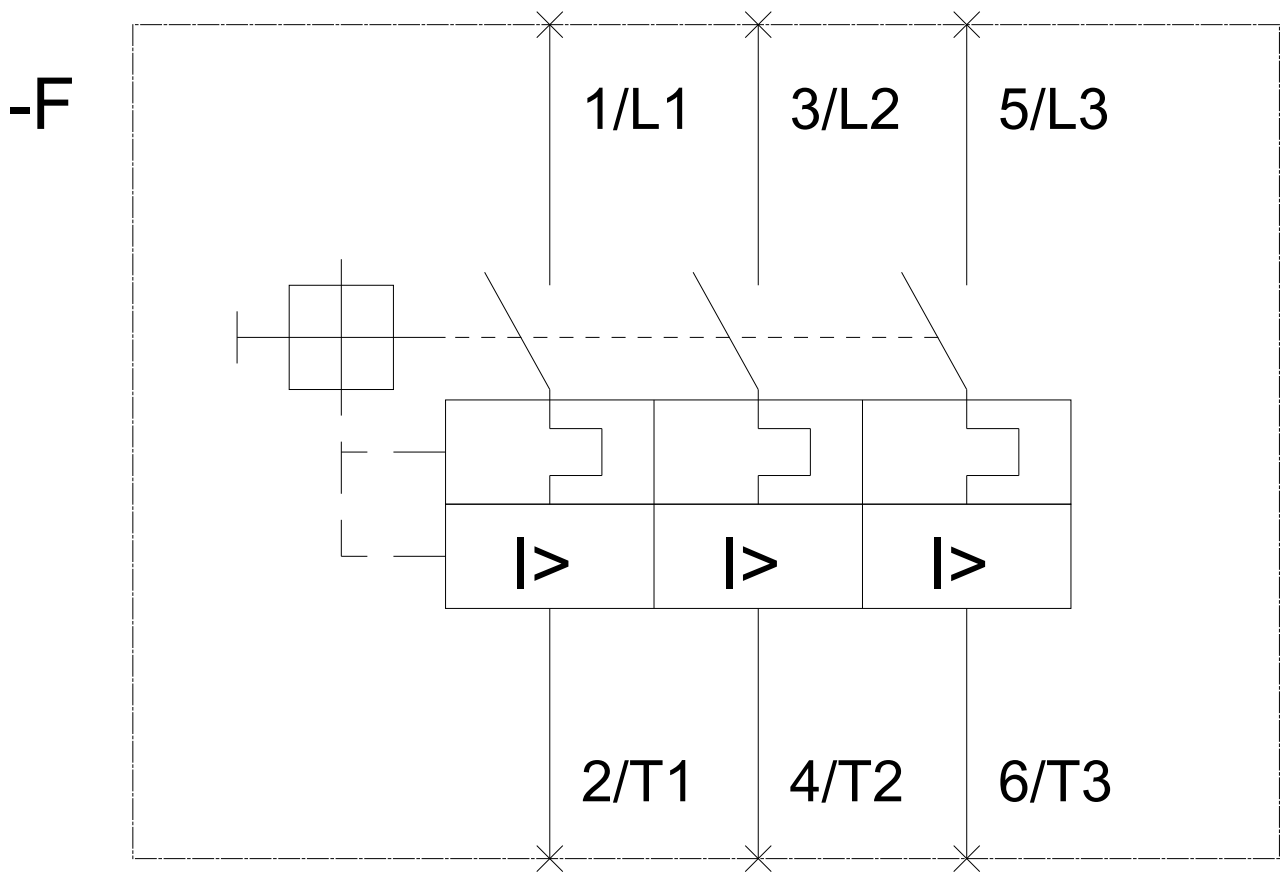
General Product Approval	Test Certificates	other
 CCC  CSA  UL  EAC	<a href="#">Type Test Certificates/Test Report</a>	<a href="#">Confirmation</a>
<b>other</b>		
 VDE		

## Further information

**Service&Support (Manuals, Certificates, Characteristics, FAQs,...)**  
<https://support.industry.siemens.com/cs/products?pnid=16027&lc=en-CN>







last modified:

11/11/2019