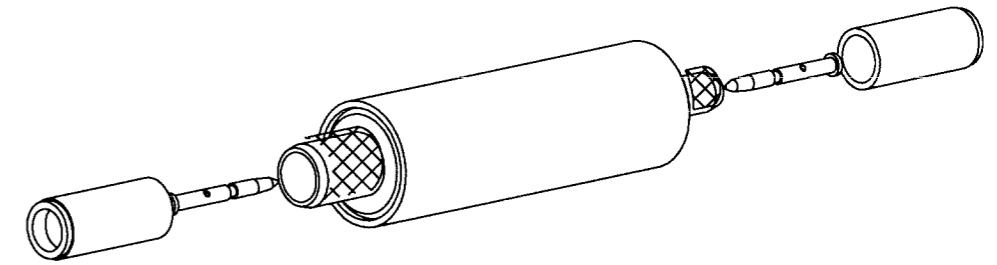


DASH NO	KS-LIST NO	CABLE	ASSEMBLY INSTRUCTIONS
-1	1	735A TO 728B	SH 3C AND 6C
-2	2	735A TO 734D	SH 3C AND 4C
-3	3	735A TO 735A	SH 3C
-4	4	734D TO 734D	SH 4C
-5	5	734D TO KS-19224 L2	SH 4C AND 5C
-6	6	735A TO KS-19224 L2	SH 3C AND 5C
-7	7	728B TO 734D	SH 4C AND 6C

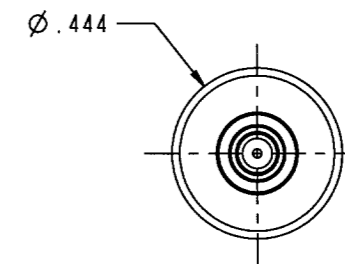
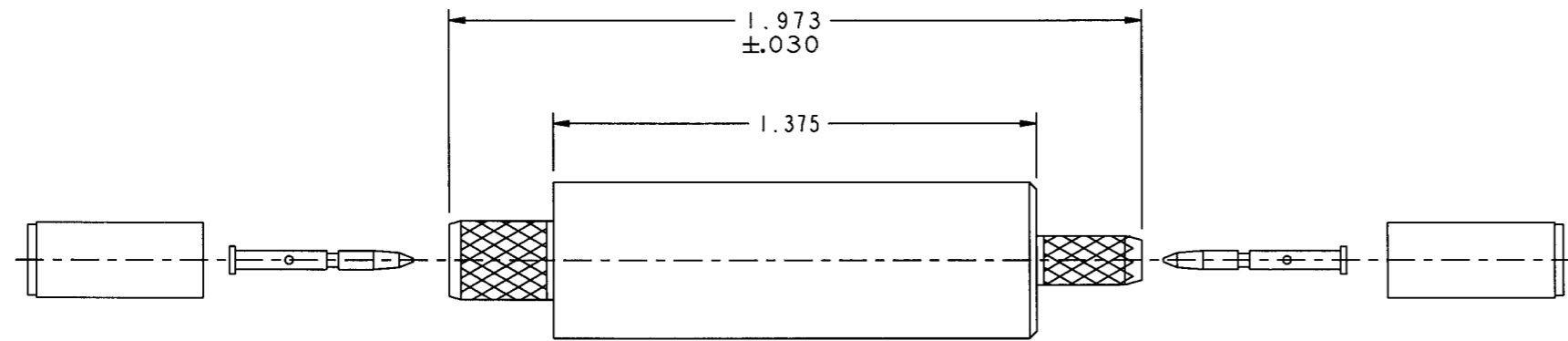
**RED INDICATES ORIGINAL**

DATA CONTAINED IN THIS DOCUMENT IS PROPRIETARY OF TROMPETER ELECTRONICS INC. AND SHALL NOT BE DISCLOSED, COPIED OR USED FOR PROCUREMENT OR MANUFACTURE WITHOUT EXPRESS WRITTEN PERMISSION.

REVISIONS			
REV	DESCRIPTION	DATE	APPROVED
F	REVISED PER ECO # 13823	11/26/01	<i>[Signature]</i>



SCALE 1.5/1



-2 SHOWN

3. 3 INCH LONG YELLOW PVC TUBE PROVIDED (NOT SHOWN)
2. KS23942, 75Ω, TOOL CRIMP CABLE ADAPTER (SPLICE)
1. ALL DIMENSIONS ARE IN INCHES

NOTES: UNLESS OTHERWISE SPECIFIED.

INTERPRET DRAWING PER MIL-STD-100. DIMENSIONS ARE IN INCHES AND INCLUDE FINISH THICKNESS. UNLESS OTHERWISE SPECIFIED.		TOL: UNLESS SPECIFIED .XX ± .XXX ± .010 .XXXX ± ANGLE ±				
DRN R7L CHK AK APPROVED <i>[Signature]</i>	1/24/01 1/26/01 1/26/01	MATERIAL _____ FINISH _____				TITLE: KS-SPLICE
NEXT ASSY		PROJ/FILE NO. 105-1905	DO NOT SCALE DWG	SCALE 2/1	DATE 9/11/98	SHEET 1C