

4060-0005

NOTES:

1. MATING:

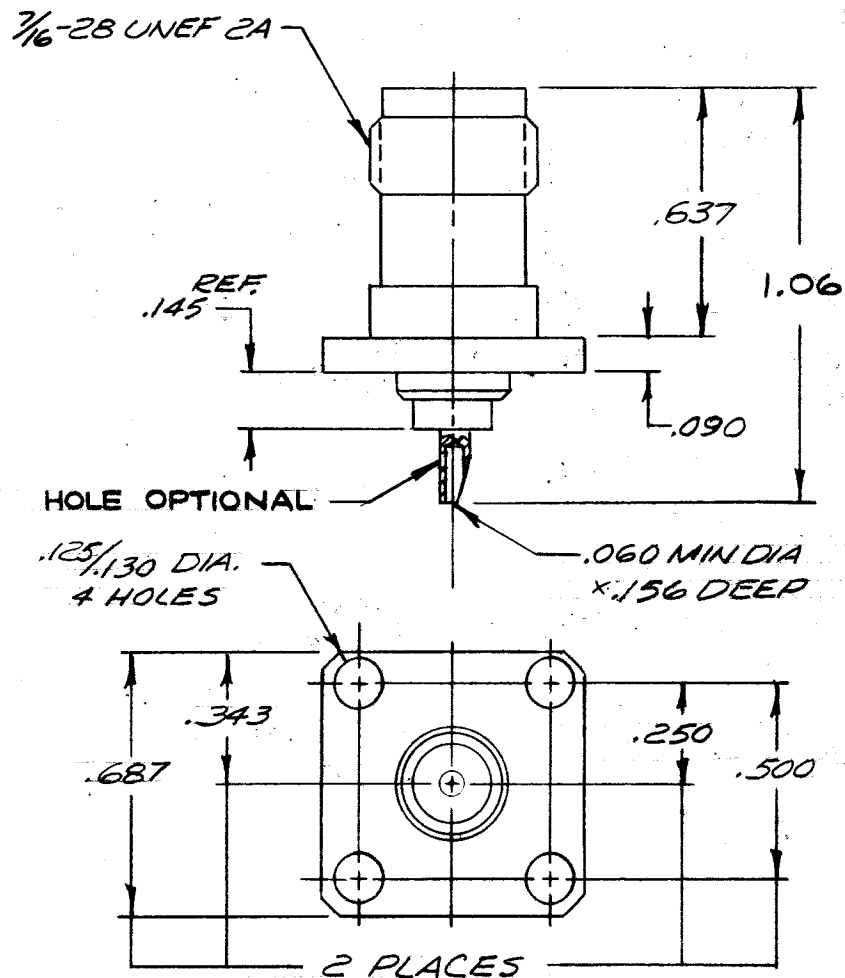
Interface Dimensions Per Mil-C-39012/TNC Series And Solitron/Microwave MD-108.

2. MATERIALS:

Body: Brass Per QQ-B-626, Comp. 22.
 Contact: Beryllium Copper Per QQ-C-530, Cond. HT.
 Dielectric: Teflon Per Mil-P-19468

3. FINISH:

Body: Silver .0002 Min., Per QQ-S-365, Type II Grade A.
 Contact: Gold Per Mil-G-45204, Type II, Over Copper Per Mil-C-14550, Class 4.



SYM	DESCRIPTION	DATE	APPR.	UNLESS OTHERWISE SPECIFIED 1. REMOVE ALL BURRS 2. BREAK ALL CORNERS & EDGES .005 R MAX. 3. CHAMFER 1ST & LAST THREADS 45° 4. SURFACE ROUGHNESS 63 ✓ MIL-STD-10 5. DIAMETERS ON COMMON CENTERS TO BE CONCENTRIC WITHIN T.I.R. 6. ALL DIMENSIONS ARE AFTER PLATING	SOLITRON / MICROWAVE		ENGINEERING DATA		
A	REV. F 5749	3/21/77	DGG		PORT SALERNO, FLORIDA		DRAWING		
B	REV. DCNF-6584	7/21/78	DGG		MATERIAL		TITLE		
C	REV. F-7999	10/80	D		SEE NOTE 2		TNC PANEL RECEPTACLE		
					FINISH		SHEET 1 OF 2		
					SEE NOTE 3		DRAWING NO.		
				DIMENSIONS ARE IN INCHES TOLERANCES DECIMALS FRACTIONAL ANGULAR .X ± .030 X' ± 1'0" .XX ± .015 ± 1/64 X'X' ± 15" .XXX ± .005		SCALE	CODE IDENT. NO.	SIZE	DRAWING NO.
				DRAWN JJD	DATE 3/21/77	2X	95077	A	4060-0005
				CHECKED	DATE				
				APPROVED DGG	DATE 3/21/77				

ENG. FILE COPY

"DESIGN CRITERIA"

4060-0005

REQUIREMENT	RATING	REQUIREMENT	RATING
Nominal Impedance (ohms)	50	Vibration	MIL-STD-202 method 204 Cond. D (20G's)
Frequency Range (ghz)	DC-15.0		
Voltage Rating (max. vrms)	500	Shock	MIL-STD-202 method 213 Cond. I (100G's)
Temperature Rating (degrees centigrade)	-65 To +165		
VSWR (max.)	N/A	Temperature Cycling	MIL-STD-202 method 102 - Cond. C (-65°C To + 200°C)
Insertion Loss (dB max.)	N/A		
RF Leakage (min. dB down)	100 dB-FGHZ	Corrosion	MIL-STD-202 method 101 Cond. B (48 hrs.)
RF High Potential (max. vrms)	1000 AT 5MHZ		
Dielectric Withstanding Voltage (max. vrms)	1500	Moisture Resistance	MIL-STD-202 method 106 less step 7b
Insulation Resistance (min. megohms)	5000		
Contact Resistance		Barometric Pressure (Altitude)	MIL-STD-202 method 105 Cond. C (70,000 ft.) (375 vrms)
Center Contact (max. milliohms)	1.5		
Outer Contact (max. milliohms)	0.2	Hermeticity	N/A
Center Contact Axial Forces			
Insertion (max. ounces)	24		
Withdrawal (min. ounces)	2		
Connector Durability (min. cycles)	500		
Connector Engagement & Disengagement (max. inch lbs.)	2.0		

REMARKS: 1.) RECOMMENDED MATING TORQUE: 30-35 INCH POUNDS