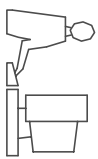
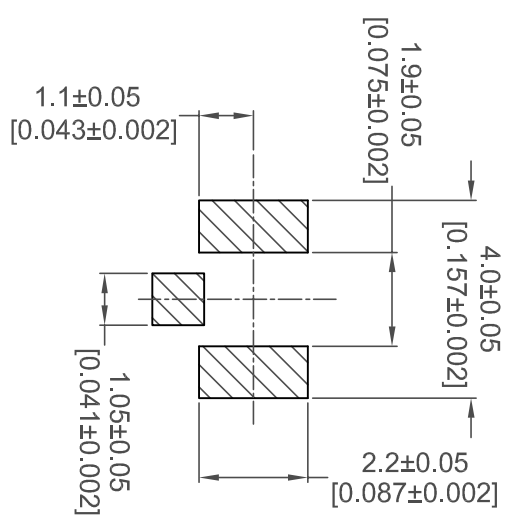
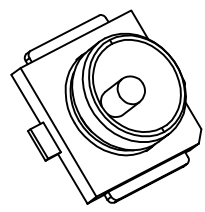
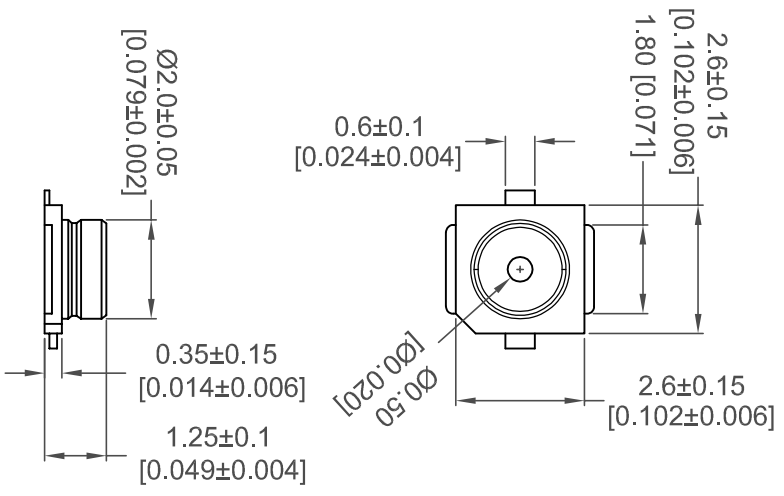


TOLERANCE UNLESS OTHERWISE SPECIFIED IN MM:  
 0 ± 0.20 ANGLE ± 4°  
 0.0 ± 0.15  
 0.00 ± 0.10  
 DIMENSIONS: MM (INCHES)

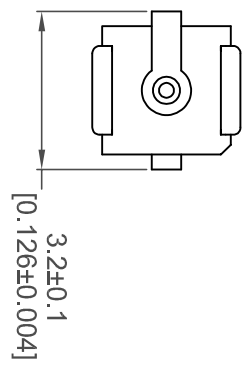
THIS IS A C.A.D. GENERATED DRAWING  
 DO NOT MAKE MANUAL REVISIONS TO MASTER.



ISSUE NUMBER	①
ORIGINAL	①
ADD SHEET 2 OF 2	②
TAPE & REEL DIMENSION	②
R.STA.MONICA	JUNE:06/2014



RECOMMENDED P.C.B. LAYOUT

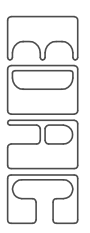


NOTE:  
 1. MATERIAL:  
 HOUSING: LCP, UL 94V-0  
 CONTACT PIN: BRASS (C2680-H), T=0.10±0.01MM  
 SHELL: BRASS (C2680-H), T=0.15±0.01MM  
 2. PLATING:  
 CONTACT/SHELL: GOLD FLASH PLATED OVER 50u" MIN OF NICKEL UNDERPLATING

I-PEX CONNECTOR



THIS SERIES FULLY CONFORMS TO THE EUROPEAN UNION DIRECTIVES 2002/95/EC AND 2002/96/EC FOR ROHS COMPLIANCY.

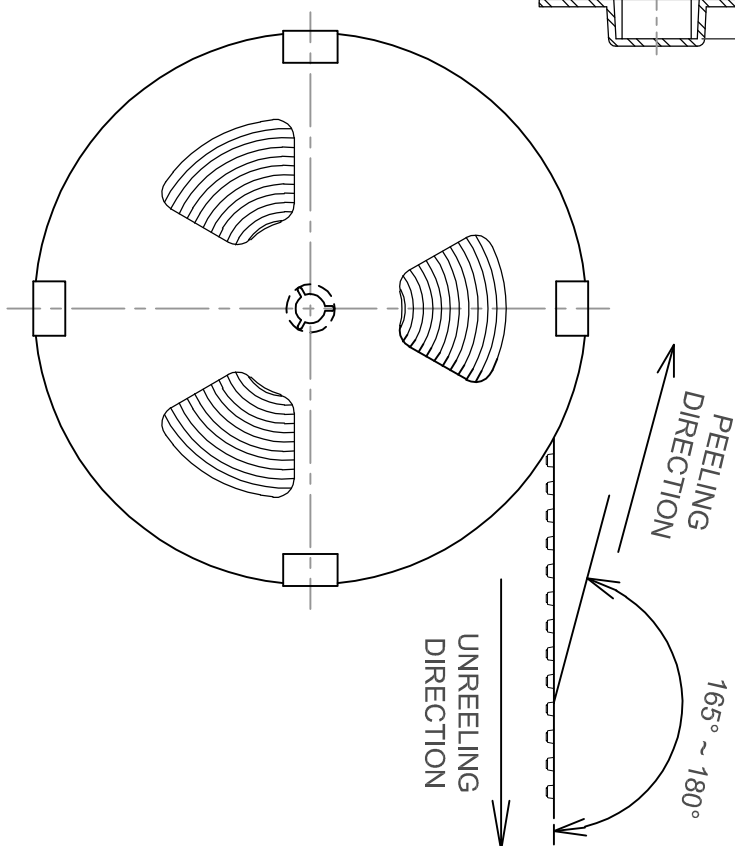
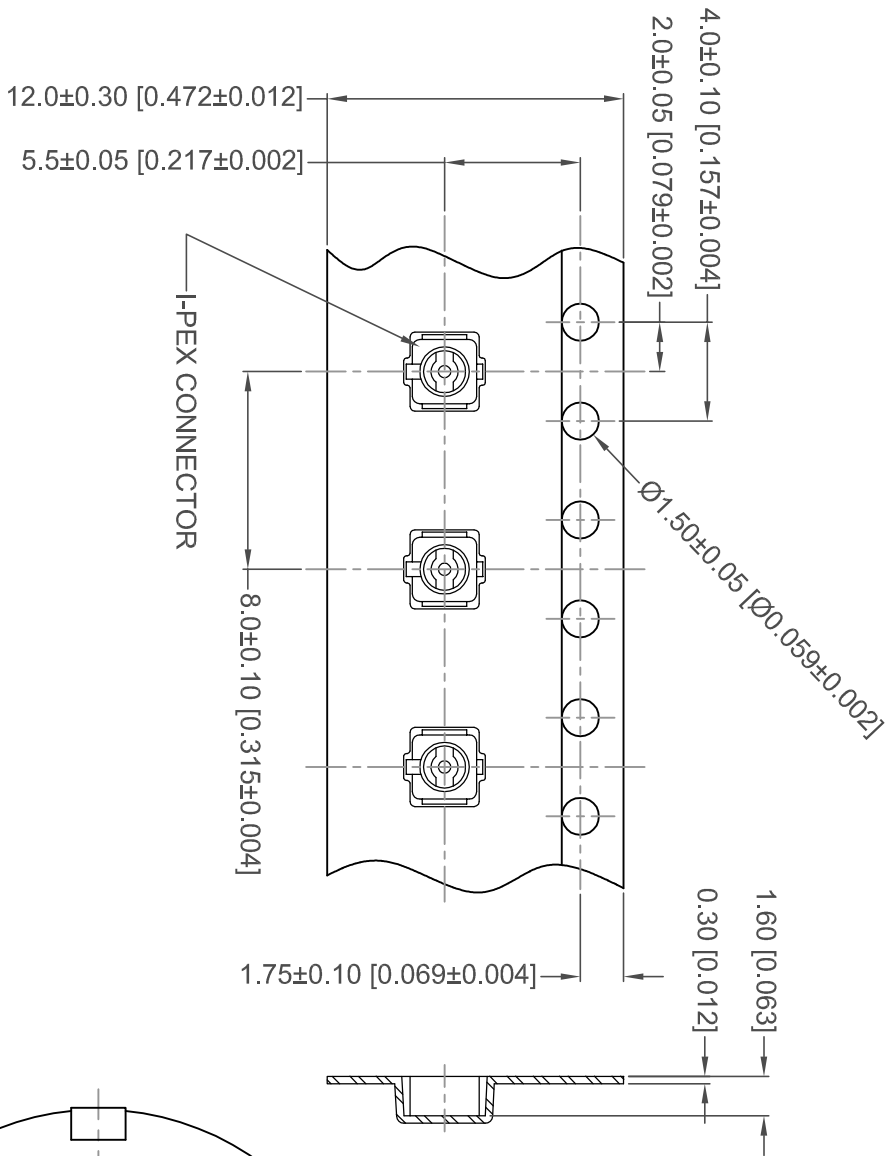
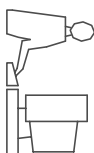


EDAC INC  
 TORONTO, ONTARIO  
 CANADA

YOUR CONNECTION TO QUALITY & SERVICE

THESE DRAWINGS AND SPECIFICATIONS ARE THE PROPERTY OF EDAC INC. AND SHALL NOT BE REPRODUCED OR COPIED OR USED AS THE BASIS FOR THE MANUFACTURE OR SALE OF APPARATUS WITHOUT WRITTEN PERMISSION.

ACAD REFERENCE NO.:	M00-355-001
DRAWN:	R.STA.MONICA
DATE:	JUL.4/2013
CHECKED:	DATE:
PART NUMBER	M00-355-001
DRAWING NUMBER	M00-355-001
SHEET 1 OF 2	ISSUE 2



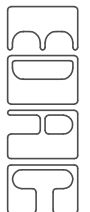
**I-PEX CONNECTOR  
REEL AND TAPE DIMENSIONS**

ACAD REFERENCE NO.: M00-355-001	DATE: JUNE.06/2014
DRAWN: R.STA.MONICA	CHECKED:

PART NUMBER <b>M00-355-001</b>	SHEET 2 OF 2
DRAWING NUMBER <b>M00-355-001</b>	ISSUE 2



THIS SERIES FULLY CONFORMS TO THE  
EUROPEAN UNION DIRECTIVES 2002/95/EC  
AND 2002/96/EC FOR RoHS COMPLIANCY.



EDAC INC  
TORONTO, ONTARIO  
CANADA  
YOUR CONNECTION TO QUALITY & SERVICE

THESE DRAWINGS AND SPECIFICATIONS  
ARE THE PROPERTY OF EDAC INC. AND  
SHALL NOT BE REPRODUCED OR COPIED  
OR USED AS THE BASIS FOR THE  
MANUFACTURE OR SALE OF APPARATUS  
WITHOUT WRITTEN PERMISSION.



**MPN: M00-355-001**

Reflow Profile:

Specified Parameters:

- Average ramp-up rate: 3°C/sec maximum
- Pre-heat temperature from 150 ~ 200°C: 60 ~ 180 seconds
- Temperature over 217°C: 60 ~ 150 seconds
- Peak temperature: 260 +0/5 °C
- Ramp-down rate: -6°C/sec maximum
- Total times from 25°C to peak temperature: 8 minutes maximum

**Lead-free Reflow Profile**

