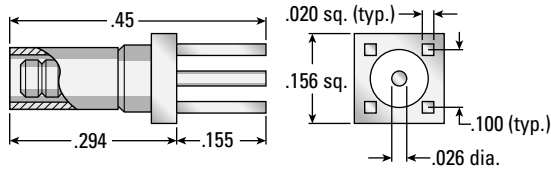


# P.C. Board Cable Terminations

## Straight P.C. Board Cable Terminations

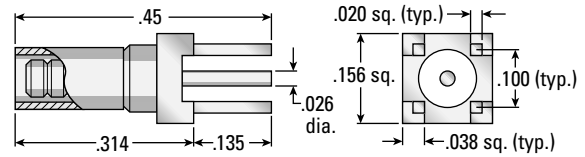
### Standard legs



LEG FINISH	AEP P/N
GOLD	7146-1511-0XX

LEG FINISH	AEP P/N
PRETINNED	7146-1511-1XX

### Standoff legs

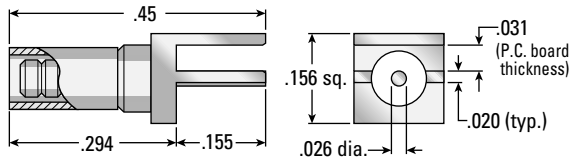


LEG FINISH	AEP P/N
GOLD	7146-1511-2XX

LEG FINISH	AEP P/N
PRETINNED	7146-1511-3XX

## Straight P.C. Board Cable Termination—Surface Mount

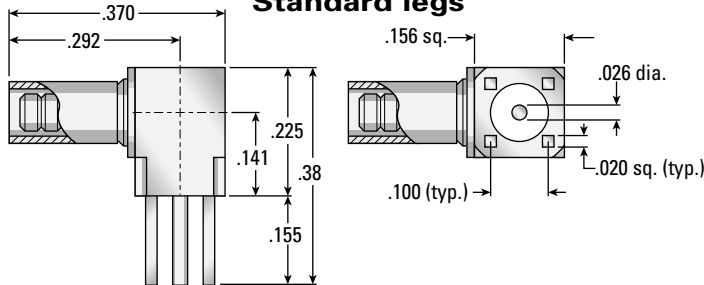
### Edge mount



LEG FINISH	AEP P/N
GOLD	7146-1511-4XX
PRETINNED	7146-1511-5XX

## Right Angle P.C. Board Cable Terminations

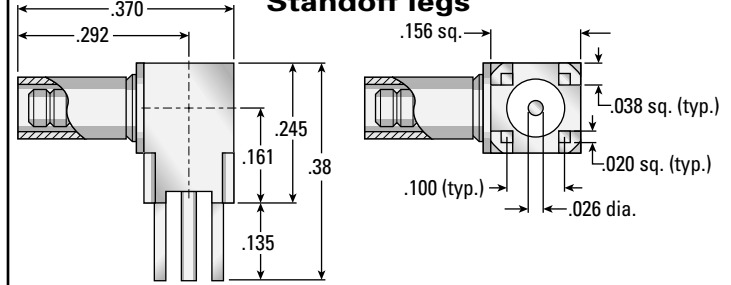
### Standard legs



LEG FINISH	AEP P/N
GOLD	7145-1511-0XX

LEG FINISH	AEP P/N
PRETINNED	7145-1511-1XX

### Standoff legs

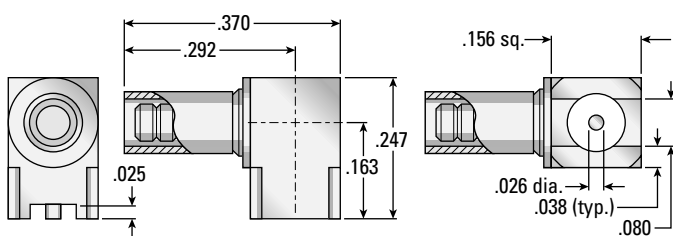


LEG FINISH	AEP P/N
GOLD	7145-1511-2XX

LEG FINISH	AEP P/N
PRETINNED	7145-1511-3XX

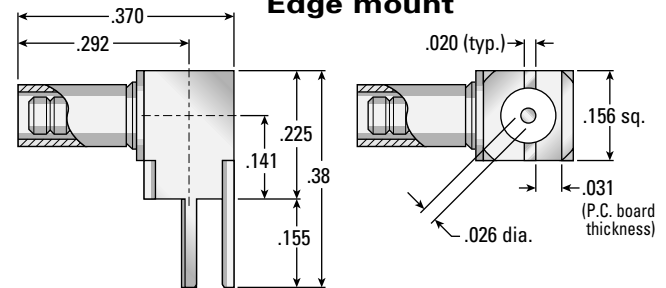
## Right Angle P.C. Board Cable Terminations—Surface Mount

### Top mount



LEG FINISH	AEP P/N
GOLD	7145-1511-6XX

### Edge mount



LEG FINISH	AEP P/N
GOLD	7145-1511-4XX

LEG FINISH	AEP P/N
PRETINNED	7145-1511-5XX

Substitute the appropriate cable group number for "XX" when ordering:

GROUP	CABLE TYPES	GROUP	CABLE TYPES
02	RG178, RG196, M17/93, M17/169	05	RG178DS, RG196DS
03	RG174, RG179, RG316, M17/113, M17/119, M17/172, M17/189	19	RG174DS, RG316DS, M17/151, M17/152, Times RD-316