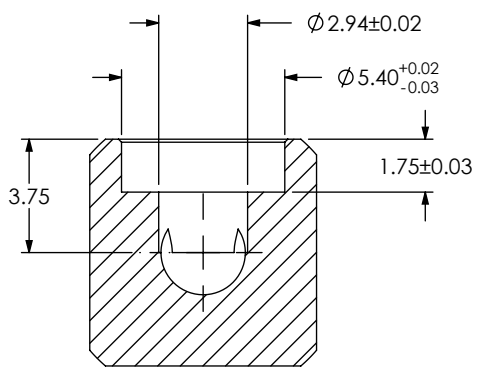
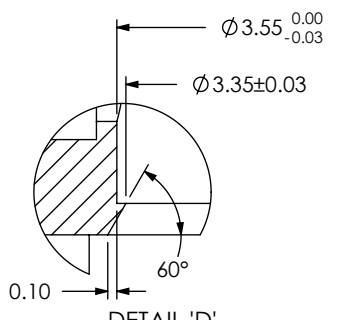


DO NOT SCALE FROM THIS PRINT

HDBNC-J-P-X-RA-BHX-BDY



SECTION "A"-"A"



DETAIL 'D' SCALE 12:1

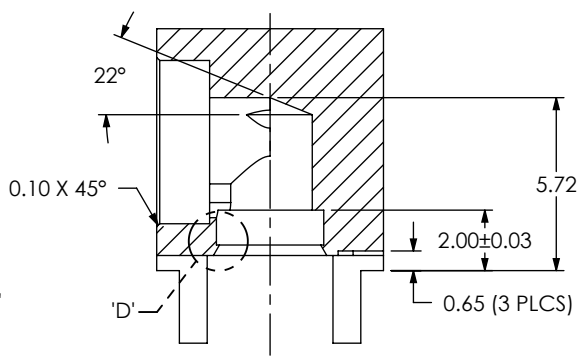
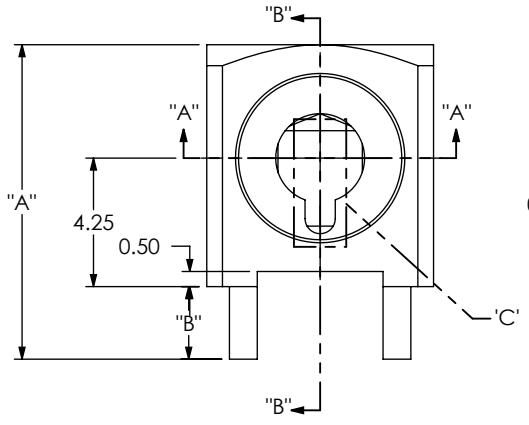
GENDER
-J: JACK

TYPE
-P: PCB

TERMINATION
-BH1: BULKHEAD THROUGH HOLE .062 BOARD
-BH2: BULKHEAD THROUGH HOLE .093 BOARD
-BH3: BULKHEAD THROUGH HOLE .062 BOARD
ROUND LEG (SEE SHT 2, FIG 2)

ORIENTATION
-RA: RIGHT ANGLE

PLATING SPECIFICATION
-N: NICKEL
-X: UNPLATED



SECTION "B"-"B"

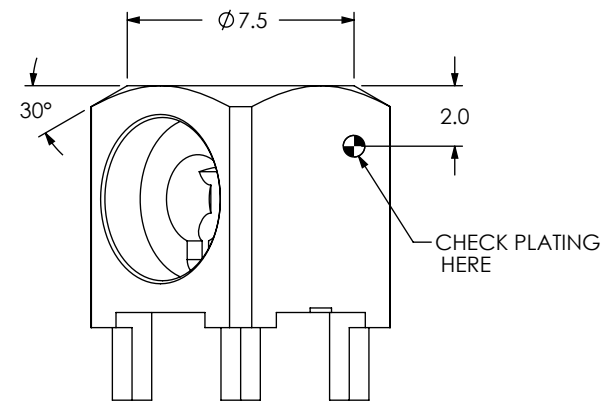
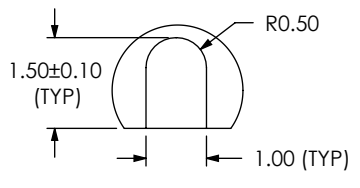
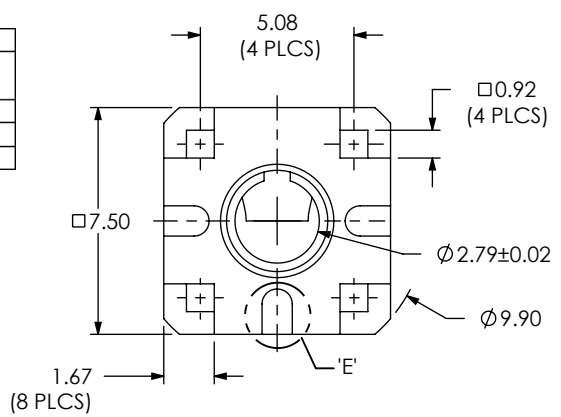
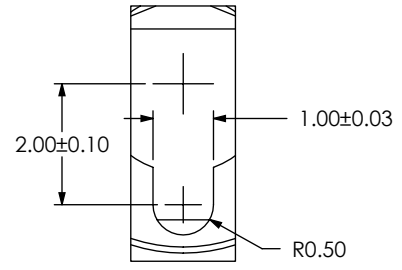


TABLE 2		
TERMINATION	"A"	"B"
-BH1	10.40	2.40
-BH2	11.70	3.70
-BH3	10.40	2.40



DETAIL 'E' SCALE 8:1



DETAIL 'C' SCALE 8:1

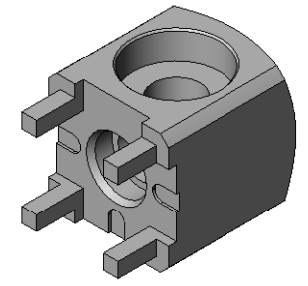


TABLE 1		
OPTION	PLATING	PLATING SURFACE AREA
-N	100 Ni MIN	.681904 SQ. IN

UNLESS OTHERWISE SPECIFIED, DIMENSIONS ARE IN MILLIMETERS. TOLERANCES ARE:
DECIMALS ANGLES
X.X: ±0.3 5°
X.XX: ±0.05
X.XXX: ±0.025

PROPRIETARY NOTE
THIS DOCUMENT CONTAINS INFORMATION CONFIDENTIAL AND PROPRIETARY TO SAMTEC, INC. AND SHALL NOT BE REPRODUCED OR TRANSFERRED TO OTHER DOCUMENTS OR DISCLOSED TO OTHERS OR USED FOR ANY PURPOSE OTHER THAN THAT WHICH IT WAS OBTAINED WITHOUT THE EXPRESSED WRITTEN CONSENT OF SAMTEC, INC.

samtec
520 PARK EAST BLVD, NEW ALBANY, IN 47150
PHONE: 812-944-6733 FAX: 812-948-5047
e-Mail: info@SAMTEC.com code 55322

MATERIAL: BRASS C3604B DO NOT SCALE DRAWING SHEET SCALE: 4:1

DESCRIPTION: HD BNC 75 OHM, RA JACK BHX BODY

DWG. NO. HDBNC-J-P-X-RA-BHX-BDY

BY: ALVIN W 02/10/2011 SHEET 1 OF 2

- NOTES:
- REPRESENTS A CONTROL PLAN CRITICAL DIMENSION.
 - SHARP CORNERS CAN BE BROKEN WITH A 0.05 RADIUS OR 0.05 x 45° CHAMFER MAX, UNLESS OTHERWISE SPECIFIED, FOR REFERENCE ONLY.
 - FABRICATED PARTS MUST BE FREE OF SCRATCHES, TOOL MARKS, BURRS, ETC.
 - SEE PLATING STANDARD CO-PL-FRM-7001-M.

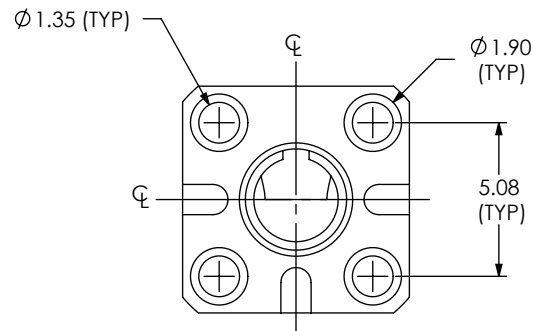
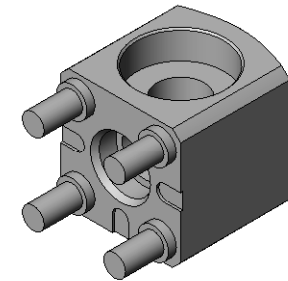
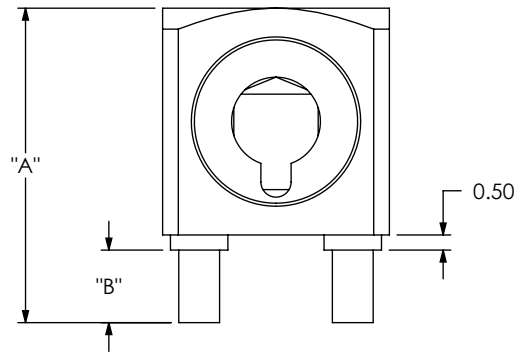


FIG 2
HDBNC-J-P-X-RA-BH3 SHOWN
SAME AS FIG 1, EXCEPT AS SHOWN

PROPRIETARY NOTE

THIS DOCUMENT CONTAINS INFORMATION CONFIDENTIAL AND PROPRIETARY TO SAMTEC, INC. AND SHALL NOT BE REPRODUCED OR TRANSFERRED TO OTHER DOCUMENTS OR DISCLOSED TO OTHERS OR USED FOR ANY PURPOSE OTHER THAN THAT WHICH IT WAS OBTAINED WITHOUT THE EXPRESSED WRITTEN CONSENT OF SAMTEC, INC.

DO NOT SCALE DRAWING

SHEET SCALE: 4:1

samtec

520 PARK EAST BLVD, NEW ALBANY, IN 47150
PHONE: 812-944-6733 FAX: 812-948-5047
e-Mail info@SAMTEC.com code 55322

DESCRIPTION:
HD BNC 75 OHM, RA JACK BHX BODY

DWG. NO.
HDBNC-J-P-X-RA-BHX-BDY

BY: ALVIN W 02/10/2011 SHEET 2 OF 2