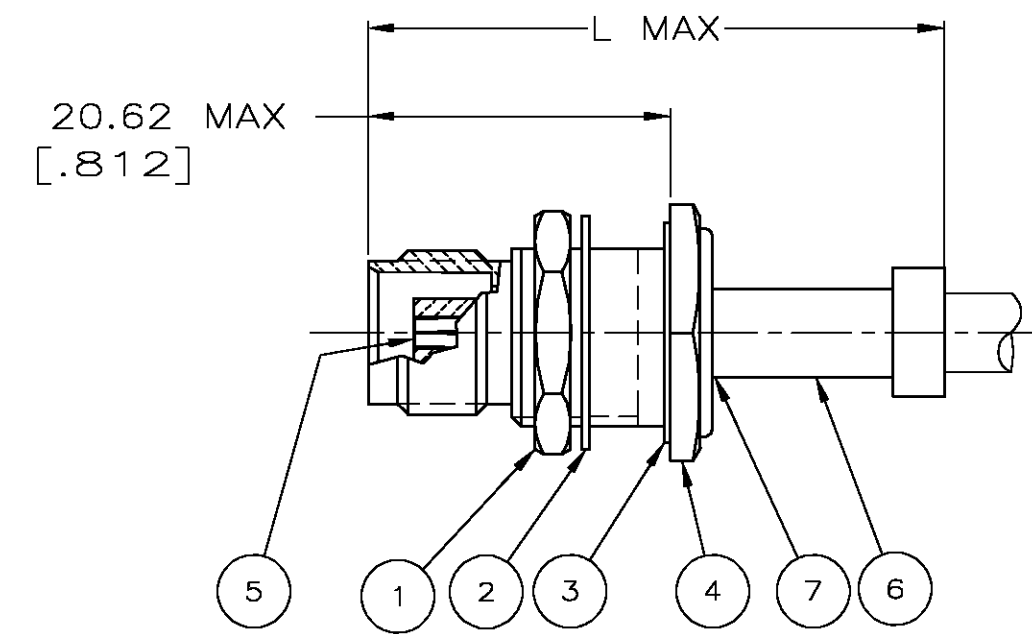
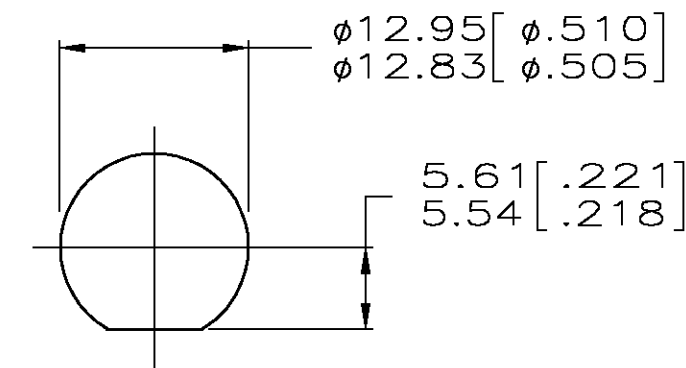


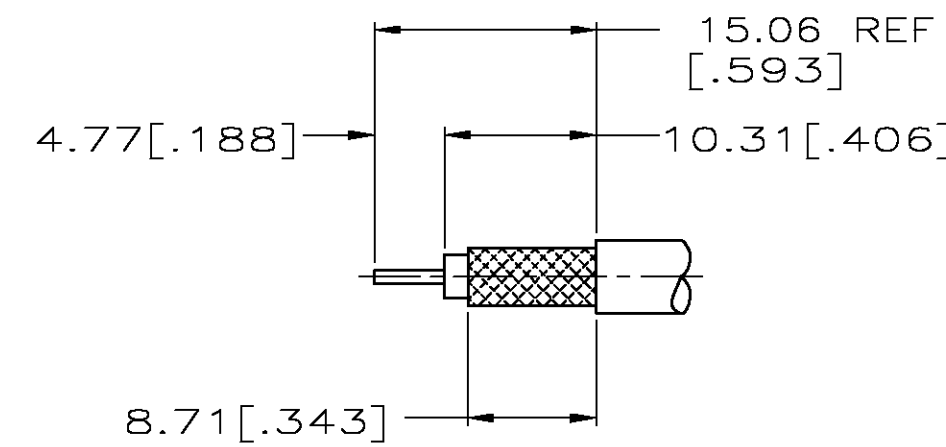
LOC		DIST		REVISONS		DATE	APPD
AW	16	P	F	ZONE	LTR	15OCT03	KW
				W		REVISED PER OS14-0485-02	



△ STAMPED WITH .047 NOMINAL HIGH CHARACTERS AS SHOWN
 2. SEE I.S. 2299-3



RECOMMENDED PANEL CUTOUT



RECOMMENDED STRIP LENGTH

SUPERSEDED BY	22557-6	40.17[1.590]	AMP 7-225552-6	220045-2	RG-142/U,142A/U & 142B/U	225592-2	225560-1	225471-6	225475-1	329633	329632	329631	7-225552-6
OBSOLETE		40.17[1.590]	AMP 7-225552-3	220045-3	RG-59B/U & 62B/U	225592-3	225560-3	225471-5	225475-3	329633	329632	329631	7-225552-3
OBSOLETE		38.49[1.531]	AMP 7-225552-2	220045-2	RG-58A/U & 58C/U	225592-1	225560-2	225471-4	225475-1	329633	329632	329631	7-225552-2
OBSOLETE		40.17[1.590]	AMP 7-225552-1	220045-2	RG-55A/U & 223/U	225592-2	225560-1	225471-4	225475-1	329633	329632	329631	7-225552-1
		40.64[1.600]	AMP 1-225552-9	220045-2	RG-55A/U & 223/U	225592-2	225560-1	225471-4	225475-1	329633	329632	1-329631-7	1-225552-9
		36.17[1.546]	AMP 1-225552-8	220045-2	RG-302/U & TIMES AA-2141	-	225413-1	225471-5	225475-5	329633	329632	329631	1-225552-8
SUPERSEDED BY	414168-2	38.49[1.531]	AMP 1-225552-7	220045-3	RG-59B/U,62B/U & BSX7002-59/U	225592-3	225560-3	225471-5	225475-3	329633	329632	1-329631-7	1-225552-7
OBSOLETE		36.17[1.546]	AMP 1-225552-5	220045-2	RG-302/U & TIMES AA-2141	-	225413-1	225471-5	225475-5	329633	329632	329631	1-225552-5
		38.49[1.531]	AMP 1-225552-1	220045-2	BXS-7002-58C/U	225592-1	225560-2	225471-4	225475-1	329633	329632	1-329631-7	1-225552-1
		51.59[2.031]	AMP 225552-8	220015-1	RG-8/U,9A/U & 214/U	332022	331987	225599-1	225601-2	329633	329632	329631	225552-8
SUPERSEDED BY	225557-6	38.49[1.531]	00779 M39012/28B0006	220045-2	RG-142/U,142A/U & 142B/U	225592-2	225560-1	225471-6	225475-1	329633	329632	1-329631-9	225552-6
OBSOLETE		38.49[1.531]	00779 M39012/28B0007	220045-3	RG-59B/U & 62B/U	225592-3	225560-3	225471-5	225475-3	329633	329632	1-329631-9	225552-3
OBSOLETE		38.49[1.531]	00779 M39012/28B0005	220045-2	RG-58/U,58A/U,58B/U & 58C/U	225592-1	225560-2	225471-4	225475-1	329633	329632	1-329631-9	225552-2
	L		STAMPING △1	USE CRIMPING TOOL	CABLE SIZE	⑦ SEAL QTY=1	⑥ FERRULE QTY=1	⑤ CONTACT QTY=1	④ JACK ASSY QTY=1	③ GASKET QTY=1	② LOCKWASHER QTY=1	① JAM NUT QTY=1	PART NUMBER

DO NOT SCALE PRINT. UNLESS SPECIFIED DIMENSIONS IN mm [INCHES] TOLERANCES ON : 2 PLC DEC ± 0.41 [.016] 3 PLC DEC ± - ANGLES ± -		DR 5-15-90 P.ALSEDEK CHK 9/12/90 R.E.RUTH APPD 9/20/90 M.PHILLIPS		AMP AMP Incorporated Harrisburg, PA 17105-3608	
MATERIAL -		APPD 9/20/90 R.E.RUTH		NAME JACK, BULKHEAD, WEATHERPROOF, DUAL CRIMP, TNC	
FINISH -		PRODUCT SPEC 108-12001		SIZE D	
		APPLICATION SPEC -		CAGE CODE 00779	
		WEIGHT -		DRAWING NO 225552	
		SCALE 2:1		SHEET 10F 1	