

Vertical Quick Disconnects



- Over 25 standard terminals available.
- Design engineering for custom terminals.

- All new stabilizing feature (See RigiTab below).

RigiTab™ Series: Stabilized Quick Disconnect Terminals

Master DWG.	7-13332-8-A	7-13342-8	7-1333R-8	7-1334R-5/-8
A	.250 (6.35)	.187 (4.75)	.250 (6.35)	.187 (4.75)
B	.318 (8.08)	.318 (8.08)	.271 (6.88)	.218 (5.54)
C	.143 (3.63)	.143 (3.63)	.150 (3.81)	.150 (3.81)
D	.557 (14.15)	.557 (14.15)	.638 (16.21)	.562 (14.27)
E	.200 (5.08)	.200 (5.08)	.200 (5.08)	.200 (5.08)
Thickness	.031 (.79)	.031 (.79)	.031 (.79)	-5 .020 (.51) -8 .031 (.79)
PCB Hole*	.048 (1.22)	.048 (1.22)	.049 (1.24)	-8 .049 (1.24) -5 .044 (1.12)
Ref. Machine †	All	All	VIP-3, CC-118, CC-112	VIP-3, CC-118, CC-112

Standard Series: Vertical Quick Disconnect Terminals

Master DWG.	7-20900-8	7-22730-8	7-21860-8	7-20610-8	7-13330-8
A	.250 (6.35)	.250 (6.35)	.250 (6.35)	.250 (6.35)	.250 (6.35)
B	.375 (9.53)	.313 (7.95)	.330 (8.38)	.312 (7.92)	.318 (8.08)
C	.663 (16.84)	.537 (13.64)	.123 (3.12)	.150 (3.81)	.143 (3.36)
D	1.158 (29.41)	.950 (24.13)	.687 (17.45)	.672 (17.07)	.557 (14.15)
E	.156 (3.96)	.203 (5.16)	.200 (5.08)	.148 (3.56)	.200 (5.08)
Thickness	.031 (.79)	.031 (.79)	.031 (.79)	.031 (.79)	.031 (.79)
PCB Hole*	.066 (1.68)	.049 (1.25)	.050 (1.27)	.049 (1.25)	.060 (1.27)
Ref. Machine †	All	All	All	All	All

Master DWG.	7-15780-8	7-21861-8	7-1334A-5/-8	7-13340-5/-8	7-21880-8
A	.236 (5.99)	.187 (4.75)	.187 (4.75)	.187 (4.75)	.083 (2.11)
B	.535 (13.59)	.245 (6.22)	.270 (6.86)	.250 (6.35)	.756 (19.20)
C	.354 (8.99)	.123 (3.12)	.140 (3.56)	.125 (3.18)	.125 (3.18)
D	.984 (24.99)	.687 (17.45)	.520 (13.21)	.437 (11.10)	1.419 (36.04)
E	.157 (3.99)	.200 (5.08)	.200 (5.08)	.150 (3.81)	.173 (4.39)
Thickness	.031 (.79)	.031 (.79)	-5 .020 (.51) -8 .031 (.79)	-5 .020 (.51) -8 .031 (.79)	.031 (.79)
PCB Hole*	.049 (1.25)	.050 (1.27)	-5 .047 (1.19) -8 .052 (1.32)	-5 .047 (1.19) -8 .052 (1.32)	.055 (1.39)
Ref. Machine †	All	All	All	All	All

Notes: Inches (mm).

*All hole sizes listed are for reference only. Consult factory for detail specifications.

Telephone: (858) 535-0077 Facsimile: (858) 535-0130 E-Mail: connect@autossplice.com www.autossplice.com

Vertical Quick Disconnects Continued

● Continuously, reeled packaging for automated insertion.

● High speed, scrap free process.



PRECISION STAMPED TERMINALS (TABS)

Master DWG.



7-22880-8



7-20470-8



7-22870-5

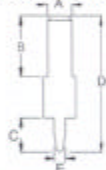


7-22871-8



A	.118	(3.00)	.110	(2.79)	.110	(2.79)	.110	(2.79)
B	.556	(14.12)	.260	(6.60)	.275	(6.98)	.275	(6.98)
C	.118	(3.00)	.380	(9.65)	.157	(3.99)	.122	(3.10)
D	.768	(19.51)	.688	(17.50)	.617	(15.67)	.582	(14.78)
E	.087	(2.21)	.062	(1.57)	.049	(1.24)	.049	(1.24)
Thickness	-8 .031	(.79)	.031	(.79)	.020	(.51)	.031	(.79)
PCB Hole*	-8 .083	(2.11)	.078	(1.98)	.044	(1.12)	.049	(1.24)
	.031	X (.079)						
Ref. Machine †	All		All		All		All	

Master DWG.



7-0815A-8



7-08150-5/-8



7-20471-8



7-20290-8



A	.110	(2.79)	.110	(2.79)	.110	(2.79)	.110	(2.79)
B	.275	(6.98)	.275	(6.98)	.260	(6.60)	.184	(4.67)
C	.157	(3.99)	.157	(3.99)	.100	(2.54)	.165	(4.19)
D	.492	(12.50)	.492	(12.50)	.408	(10.36)	.404	(10.26)
E	.049	(1.24)	.049	(1.24)	.081	(2.10)	.138	(3.51)
Thickness	.031	(.79)	-5 .020	(.51)	.031	(.79)	.031	(.79)
PCB Hole*	.049	(1.25)	-8 .031	(.79)	.078	(1.98)		
			-5 .044	(1.12)				
			-8 .049	(1.25)				
Ref. Machine †	All		All		All		Consult Factory	

Master DWG.



7-23900-7



7-301500-8



7-0736D-8



7-30050-8



7-23320-8



A	.069	(1.74)	.063	(1.60)	.063	(1.68)	.059	(1.50)
B	.374	(9.50)	.375	(9.53)	.485	(12.32)	.460	(11.68)
C	.146	(3.70)	.250	(6.35)	.122	(3.10)	.153	(3.89)
D	.717	(18.20)	.655	(16.64)	.662	(16.81)	.664	(16.87)
E	.069	(1.74)	.035	(.89)	.067	(1.45)	.032	(.83)
Thickness	.025	(.64)	.031	(.79)	.031	(.79)	.031	(.79)
PCB Hole*	.027	(.69)	.039	(0.99)	.056	(1.42)	.039	(0.99)
	.071	X (1.80)						
Ref. Machine †	All		All		All		All	

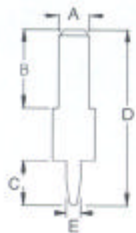
Notes: Inches (mm).

*All hole sizes listed are for reference only. Consult factory for detail specifications.

Telephone: (858) 535-0077 Facsimile: (858) 535-0130 E-Mail: connect@autosplice.com www.autosplice.com

Vertical Quick Disconnect Continued

Master DWG.



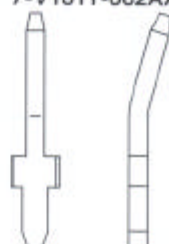
7-V1017-002AA



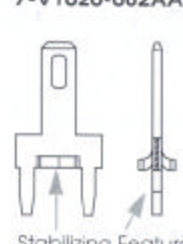
7-V1002-002AA



7-V1011-002AA



7-V1026-002AA



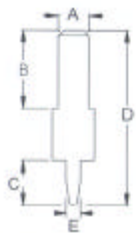
A	.110	(2.79)
B	.540	(13.72)
C	.157	(3.99)
D	.757	(19.23)
E	.052	(1.32)
Thickness	.031	(.791)
PCB Hole*	.053	(1.35)
Ref. Machine †	All	

A	.035	(0.90)
B	.244	(6.20)
C	.092	(2.34)
D	.375	(9.53)
E	.035	(0.90)
Thickness	.025	(0.64)
PCB Hole*	.038	(.965)
Ref. Machine †	All	

A	.025	(0.64)
B	.194	(4.92) Ref.
C	.087	(2.21)
D	.321	(8.14)
E	.035	(0.89)
Thickness	.025	(0.64)
PCB Hole*	.038	(0.96)
Ref. Machine †	All	

A	.110	(2.79)
B	.275	(6.99)
C	.143	(3.63)
D	.514	(13.06)
E	.200	(5.08)
Thickness	.031	(0.79)
PCB Hole*	.050	(1.27)
Ref. Machine †	All	

Master DWG.



7-V1019-002AA



7-V1038-002AA



7-V1033-002AA



7-V1024-009AA



7-V1023-002AA
-012AA



A	.062	(1.6)
B	.508	(12.9)
C	.118	(3.00)
D	.724	(18.38)
E	.033	(.83)
Thickness	.032	(.812)
PCB Hole*	.037	(.94)
Ref. Machine †	All	

A	.059	(1.50)
B	.417	(10.6)
C	.091	(2.31)
D	.564	(14.33)
E	.031	(.81)
Thickness	.031	(.81)
PCB Hole*	.038	(.965)
Ref. Machine †	All	

A	.059	(1.50)
B	.437	(11.10)
C	.093	(2.35)
D	.642	(16.30)
E	.059	(1.50)
Thickness	.025	(.64)
PCB Hole*	Consult Factory	
Ref. Machine †	All	

A	.059	(1.50)
B	.487	(12.37)
C	.088	(2.24)
D	.839	(21.31)
E	.025	(.64)
Thickness	.025	(.64)
PCB Hole*	.028	(0.71)
Ref. Machine †	All	

A	.059	(1.50)
B	.493	(12.52)
C	.804	(20.43)
D	.069	(1.75)
E	.601	(15.27)
Thickness	.912	(23.16)
PCB Hole*	.059	(1.50)
Ref. Machine †	All	

A	.059	(1.50)
B	.493	(12.52)
C	.804	(20.43)
D	.069	(1.75)
E	.601	(15.27)
Thickness	.912	(23.16)
PCB Hole*	.059	(1.50)
Ref. Machine †	All	

Automotive Connector Terminals

Master DWG.



6-30022-6



6-30023-6



6-30021-6



6-V1002-002AA



6-V1004-005AA



6-V1008-005AA



A	.067	(1.70)
B	.364	(9.25)
C	.620	(15.75)
Thickness	.025	(.64)
PCB Hole*	.033	(0.84)
REF. Machine†	VIP-3, CC-118, CC-112	

A	.067	(1.70)
B	.827	(21.00)
C	.094	(2.40)
Thickness	.025	(.64)
PCB Hole*	.033	(0.84)
REF. Machine†	VIP-3, CC-118, CC-112	

A	.042	(1.07)
B	.364	(9.25)
C	.093	(2.35)
Thickness	.025	(.64)
PCB Hole*	.033	(0.84)
REF. Machine†	VIP-3, CC-118, CC-112	

A	.060	(1.50)
B	.545	(13.84)
C	.094	(2.40)
Thickness	.024	(.60)
PCB Hole*	.034	(0.864)
REF. Machine†	VIP-3, CC-118, CC-112	

A	.040	(1.00)
B	.535	(13.6)
C	.091	(2.31)
Thickness	.025	(.63)
PCB Hole*	.034	(0.864)
REF. Machine†	VIP-3, CC-118, CC-112	

A	.040	(1.0)
B	.500	(12.7)
C	.093	(2.36)
Thickness	.025	(.635)
PCB Hole*	.032	(0.81)
REF. Machine†	VIP-3, CC-118, CC-112	

Notes: Inches (mm).

*All hole sizes listed are for reference only. Consult factory for detail specifications.

Telephone: (858) 535-0077 Facsimile: (858) 535-0130 E-Mail: connect@autosplice.com www.autosplice.com

