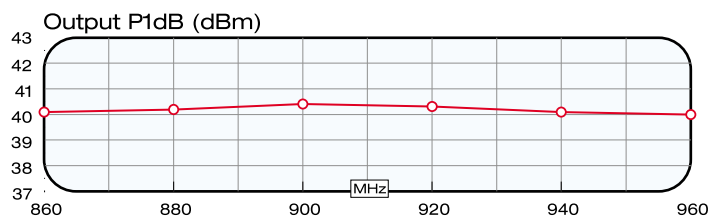
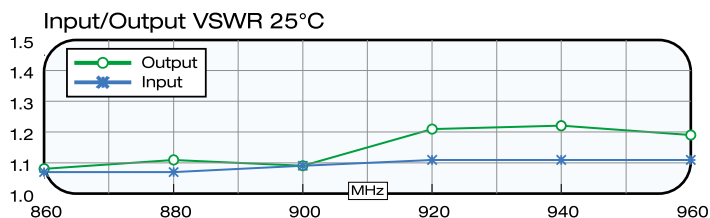
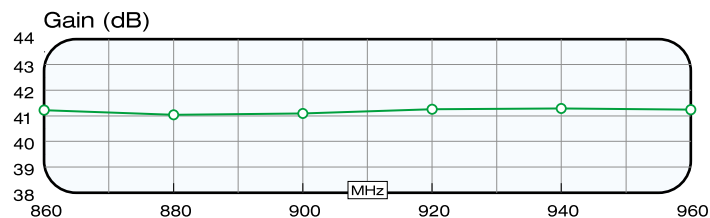


# Repeater Power Amplifier

## QBS-453



REMEC's QBS-453 is ideal for repeater system applications. In areas where communication quality is an issue, this amplifier can improve signal transmission which will, in turn, boost network performance. All REMEC amplifiers can be designed and manufactured to customer specific requirements. Call the factory today with your specific requirements.



### At REMEC

We pride ourselves on building upon our core amplifier technologies to meet custom requirements. Contact us to discuss modifications to any of our amplifiers and to discuss your next generation requirements.

### FEATURES

- 860 to 960 MHz frequency band
- OIP3 +49 dBm
- Unconditionally Stable
- P1dB 10 Watts
- Repeater Applications
- High Reliability

The Total Microwave Solution

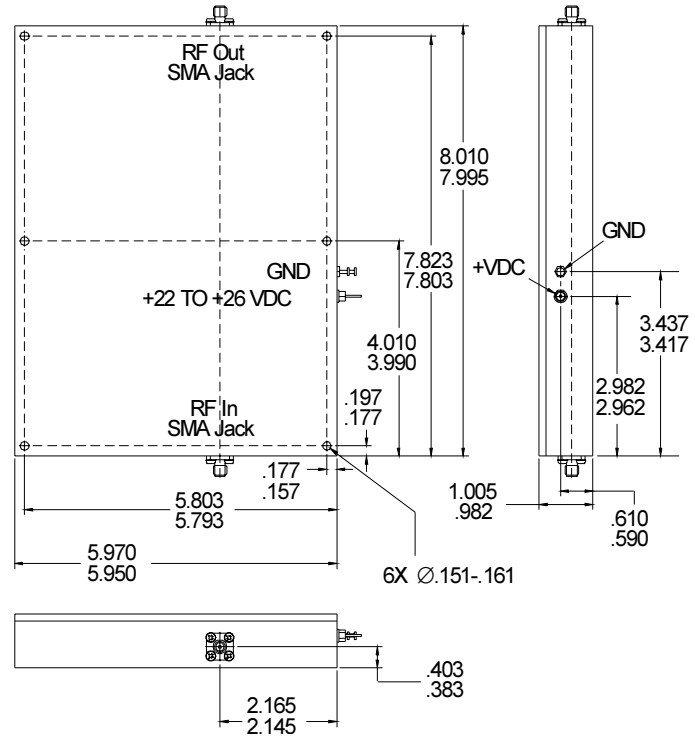


# Repeater Power Amplifier

## QBS-453

Electrical Characteristics	Specification
Frequency	860 to 960 MHz
Gain	42.0 ± 1.0 dB
Gain Flatness	1.5 dB
Input and Output Return Loss	2.0:1 / 2.0:1
P1dB	+40 dBm
Third OIP	+50 dBm
DC Voltage	24 Vdc
DC Current	3500 mA
Absolute Maximum Ratings	Specification
Power Supply Voltage:	
Sustaining	+30.0 Vdc
Pulse (transient)	+30.0 Vdc
Temperature:	
Operating	-20 to +60°C
Storage	-55 to +125°C
Maximum Input Drive	1.25 Vrms

### Outline Drawing



The Total Microwave Solution