

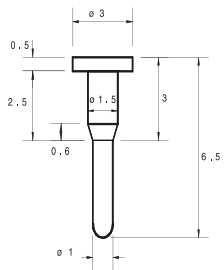


### Product Code

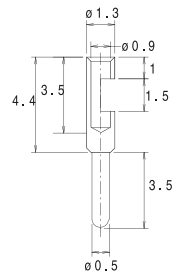
A	B	C	D	E	F
xxx	xxxx	000	x	x	0

<b>A</b>	Family
<b>B</b>	Type of terminal pin
<b>D</b>	Used material (see references below) 2 Copper 4 Bronze 5 Brass

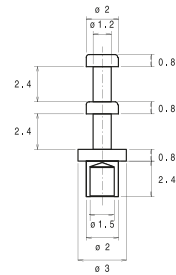
<b>E</b>	Plating 0 Gold 0.2 $\mu\text{m}$ over Ni 1.27 $\mu\text{m}$ 4 Tin 5 $\mu\text{m}$ over Ni 1.27 $\mu\text{m}$
----------	---



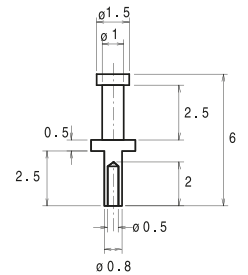
3103696000500



3120838000500



31100070005X0



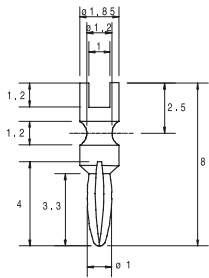
31103460005X0



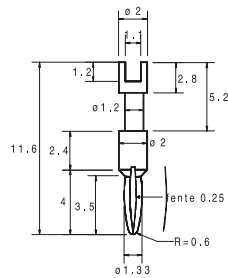
### Product Code

A	B	C	D	E	F
xxx	xxxx	000	x	x	0

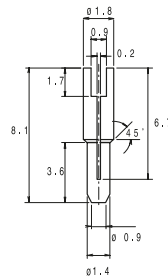
<b>A</b>	Family	<b>E</b>	Plating 0 Gold 0.2 µm over Ni 1.27 µm 4 Tin 5 µm over Ni 1.27 µm
<b>B</b>	Type of terminal pin		
<b>D</b>	Used material (see references below) 2 Copper 4 Bronze 5 Brass		



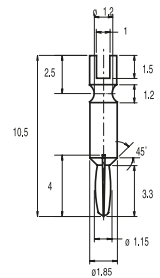
31110220005X0



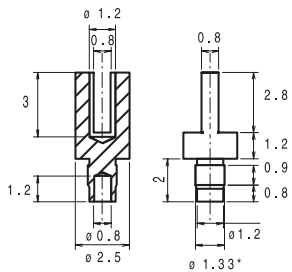
3101497000540



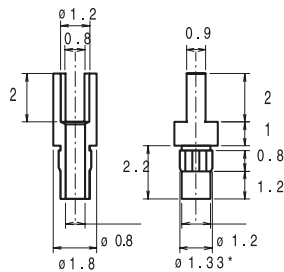
3110754000540



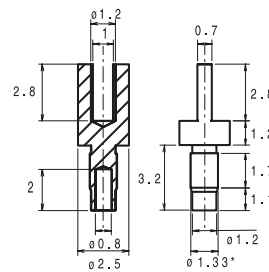
3101565000500



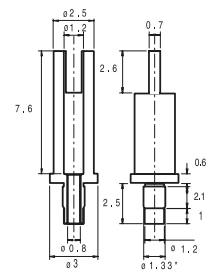
31101690005X0



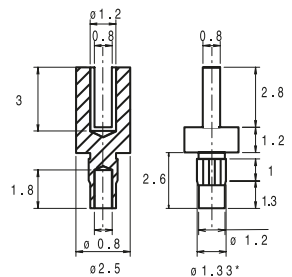
31100530005X0



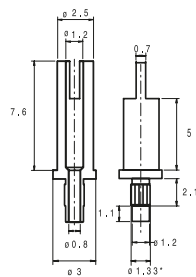
31100780005X0



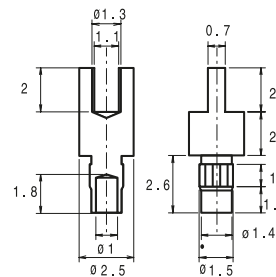
31100510005X0



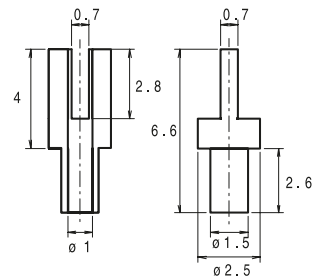
31100170005X0



31100770005X0



31100940005X0



31101610005X0

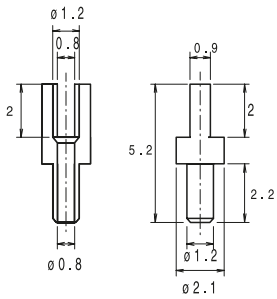
\*: Knurled



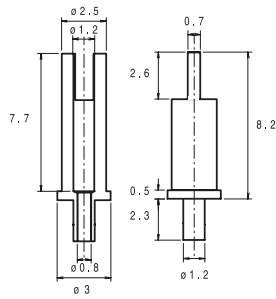
### Product Code

A	B	C	D	E	F
xxx	xxxx	000	x	x	0

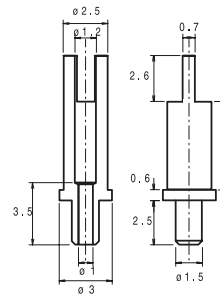
<b>A</b>	Family	<b>E</b>	Plating 0 Gold 0.2 μm over Ni 1.27 μm 4 Tin 5 μm over Ni 1.27 μm
<b>B</b>	Type of terminal pin		
<b>D</b>	Used material (see references below) 2 Copper 4 Bronze 5 Brass		



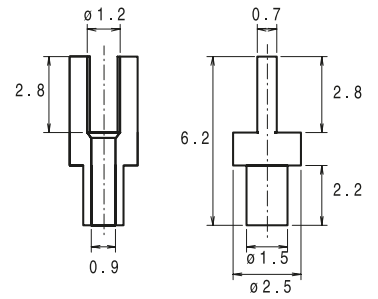
3110938000500



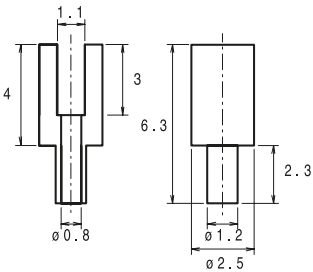
31103260005X0



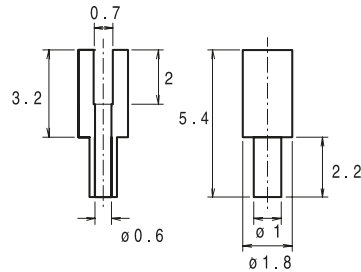
31100200005X0



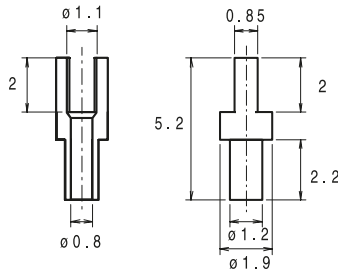
31100190005X0



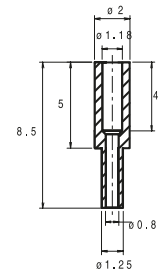
31103350005X0



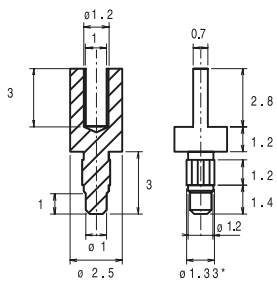
31101640005X0



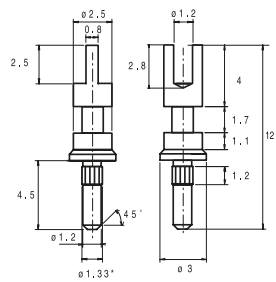
31102420005X0



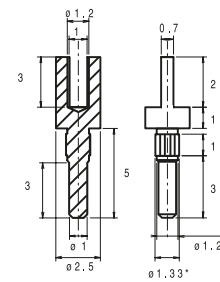
3130152000540



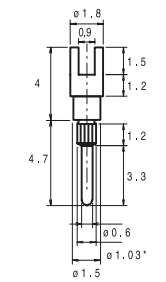
31100580005X0



31103220005X0



31100180005X0



31108150005X0

"Due to technical progress, all design, specification and components are subject to change without notice".



# FORK TERMINAL

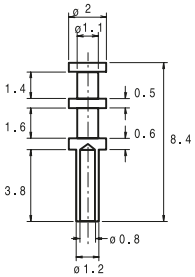
## TERMINAL PINS FORK TERMINAL



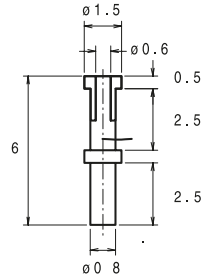
### Product Code

A	B	C	D	E	F
xxx	xxxx	000	x	x	0

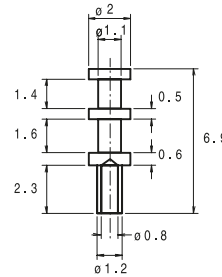
<b>A</b>	Family	<b>E</b>	Plating 0 Gold 0.2 μm over Ni 1.27 μm 4 Tin 5 μm over Ni 1.27 μm
<b>B</b>	Type of terminal pin		
<b>D</b>	Used material (see references below) 2 Copper 4 Bronze 5 Brass		



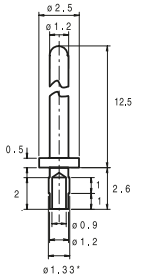
31103440005X0



31101650005X0



31103250005X0



3130356000500

# MALE TEST TERMINAL

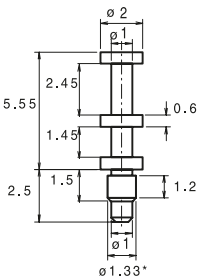
## TERMINAL PINS LOOSE MALE TEST TERMINALS



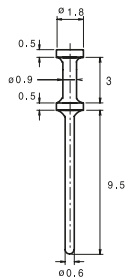
### Product Code

A	B	C	D	E	F
xxx	xxxx	000	x	x	0

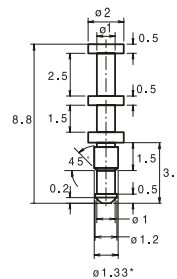
<b>A</b>	Family	<b>E</b>	Plating 0 Gold 0.2 μm over Ni 1.27 μm 4 Tin 5 μm over Ni 1.27 μm
<b>B</b>	Type of terminal pin		
<b>D</b>	Used material (see references below) 2 Copper 4 Bronze 5 Brass		



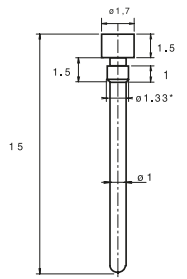
31100140005X0



3110190000540



31100250005X0



3102840000540

\*: Knurled

"Due to technical progress, all design, specification and components are subject to change without notice".

## MALE TEST TERMINAL

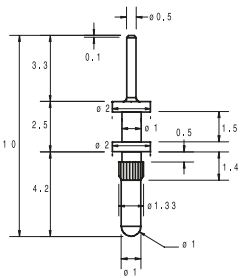
## TERMINAL PINS LOOSE MALE TEST TERMINALS



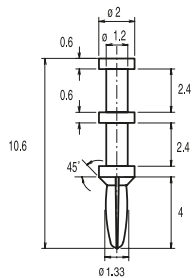
### Product Code

A	B	C	D	E	F
xxx	xxxx	000	x	x	0

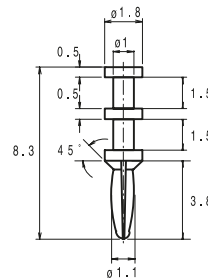
<b>A</b>	Family	<b>E</b>	Plating 0 Gold 0.2 µm over Ni 1.27 µm 4 Tin 5 µm over Ni 1.27 µm
<b>B</b>	Type of terminal pin		
<b>D</b>	Used material (see references below) 2 Copper 4 Bronze 5 Brass		



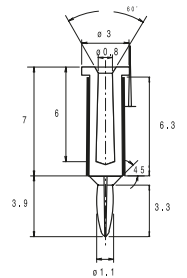
31036880005X0



31113310005X0



3111607000540



3101555000400

## MINIFASTON TERMINAL

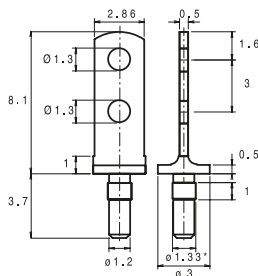
## TERMINAL PINS LOOSE MINIFASTON TERMINALS



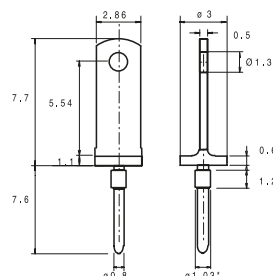
### Product Code

A	B	C	D	E	F
xxx	xxxx	000	x	x	0

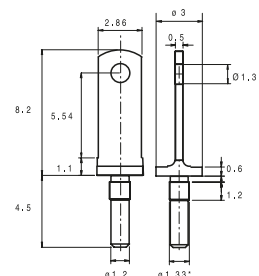
<b>A</b>	Family	<b>E</b>	Plating 0 Gold 0.2 µm over Ni 1.27 µm 4 Tin 5 µm over Ni 1.27 µm
<b>B</b>	Type of terminal pin		
<b>D</b>	Used material (see references below) 2 Copper 4 Bronze 5 Brass		



31102540005X0



31109020005X0



31103230005X0

\*: Knurled