

product: DELPHI PN 15414435  
 material: CUNI3SI1MG  
 surface: F.SN3  
 material thickness: 0,25 mm  
 cross section [mm²]: 1,5 | 2,0  
  
 strip length: 4,00 mm  
 cable type: IRT2  
 insulation ø [mm]: 2,10 - 2,80  
 seal:

**Uncontrolled  
Copy  
For Information only!**

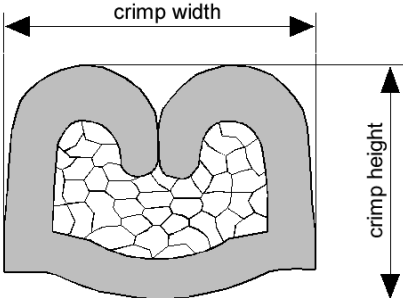
conductor dimension					crimp dimension [mm]					
cable type	cross sect. [mm²]	struct. n x d [mm]	insul. diam. [mm]	tear-out force [N]	core		insulation			
					height ± 0,05	width ± 0,10	height ± 0,10	width ± 0,10	height ± tol.	width ± tol.
IRT2	1,5	30 x 0,24	2,25	200	1,55	2,40	2,50	3,00		
IRT2	2,0	37 x 0,25	2,70	230	1,65	2,40	2,65	3,05		

core:  
 C-2.30-3.0-10  
 DPN 10713719

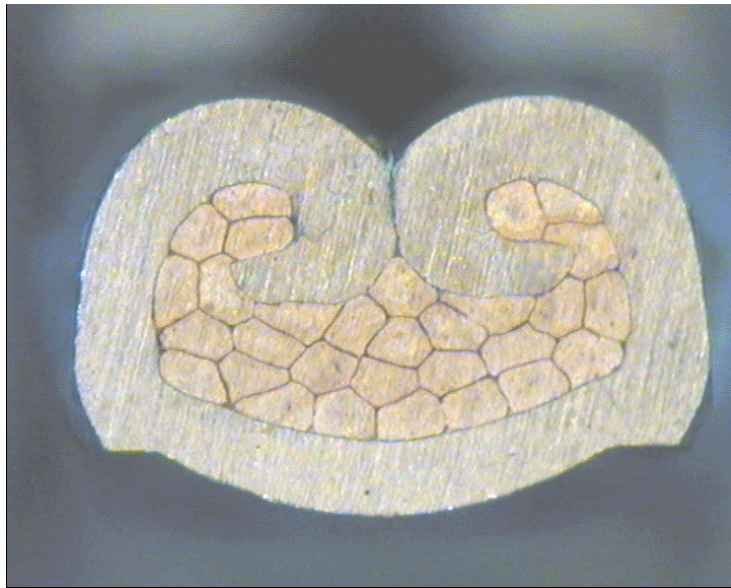
insulation:  
 IS-3.00-3.0-12  
 DPN 10713804

anvil:

two piece anvil:  
 AC-2.30-3.25  
 DPN 10764230  
 AI-3.00-3.2-0.4  
 DPN 10764200



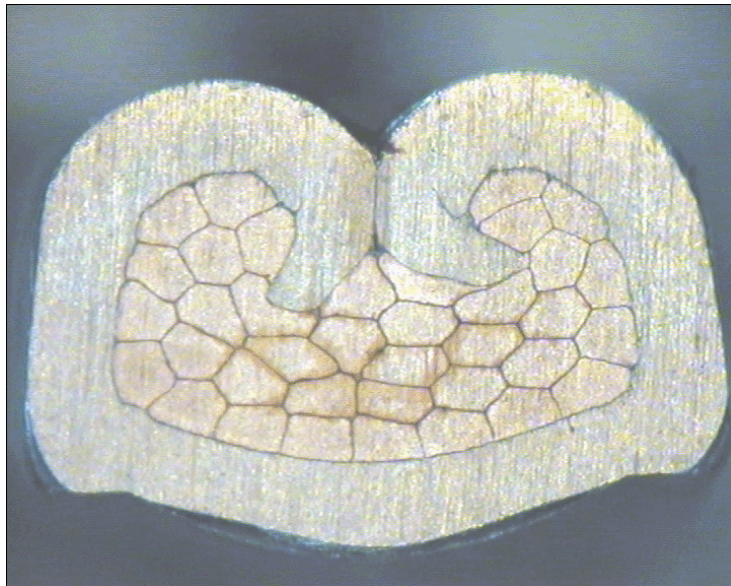
DELPHI PN 15414435



cable:  
 $1,50 \text{ mm}^2 = 30 \times 0,24 \text{ mm}$

crimp height:  
1,55 mm

crimp width:  
2,40 mm



cable:  
 $2,00 \text{ mm}^2 = 37 \times 0,25 \text{ mm}$

crimp height:  
1,65 mm

crimp width:  
2,40 mm