
PF0075A

MOS FET Power Amplifier Module for AMPS Handy Phone

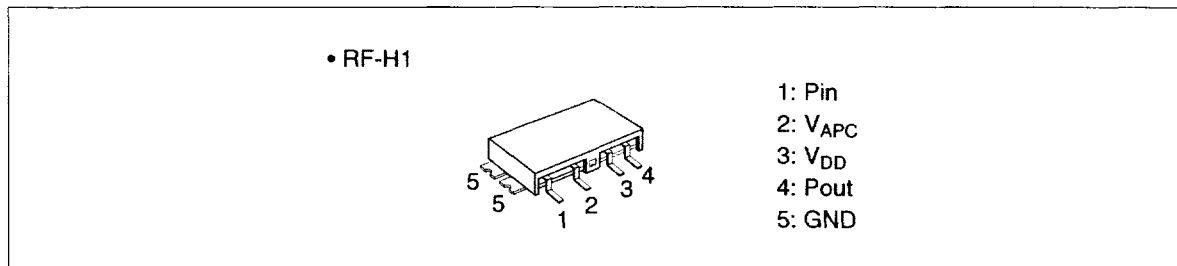
HITACHI

ADE-208-341C (Z)
Product preview 4th. Edition
July 1996

Features

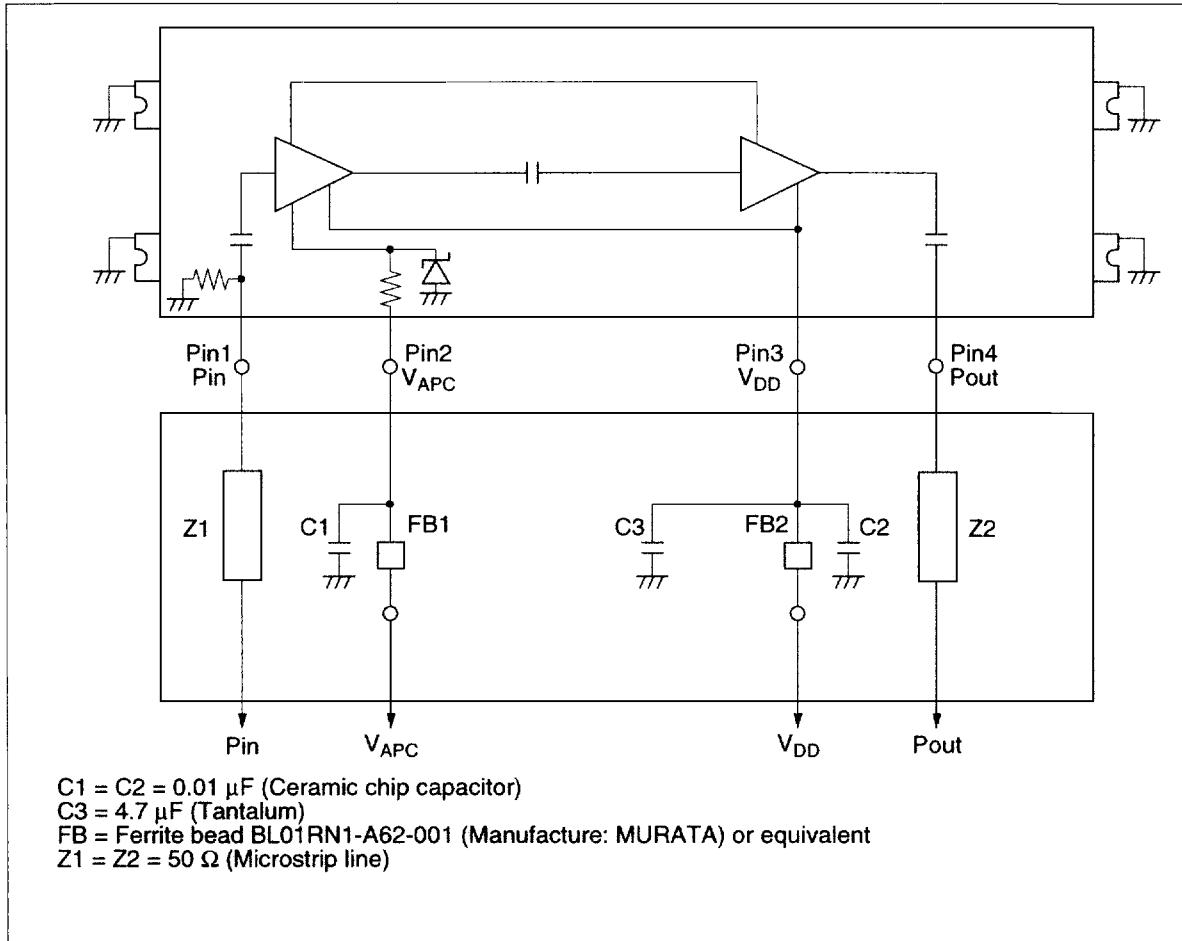
- 2 stage amplifier
- High efficiency: 55% Typ at 1.2 W
- Low power control current: 500 μ A
- Reflowable surface mounted small package: 0.6 cc

Pin Arrangement



PF0075A

Internal Diagram and External Circuit



Absolute Maximum Ratings (Tc = 25°C)

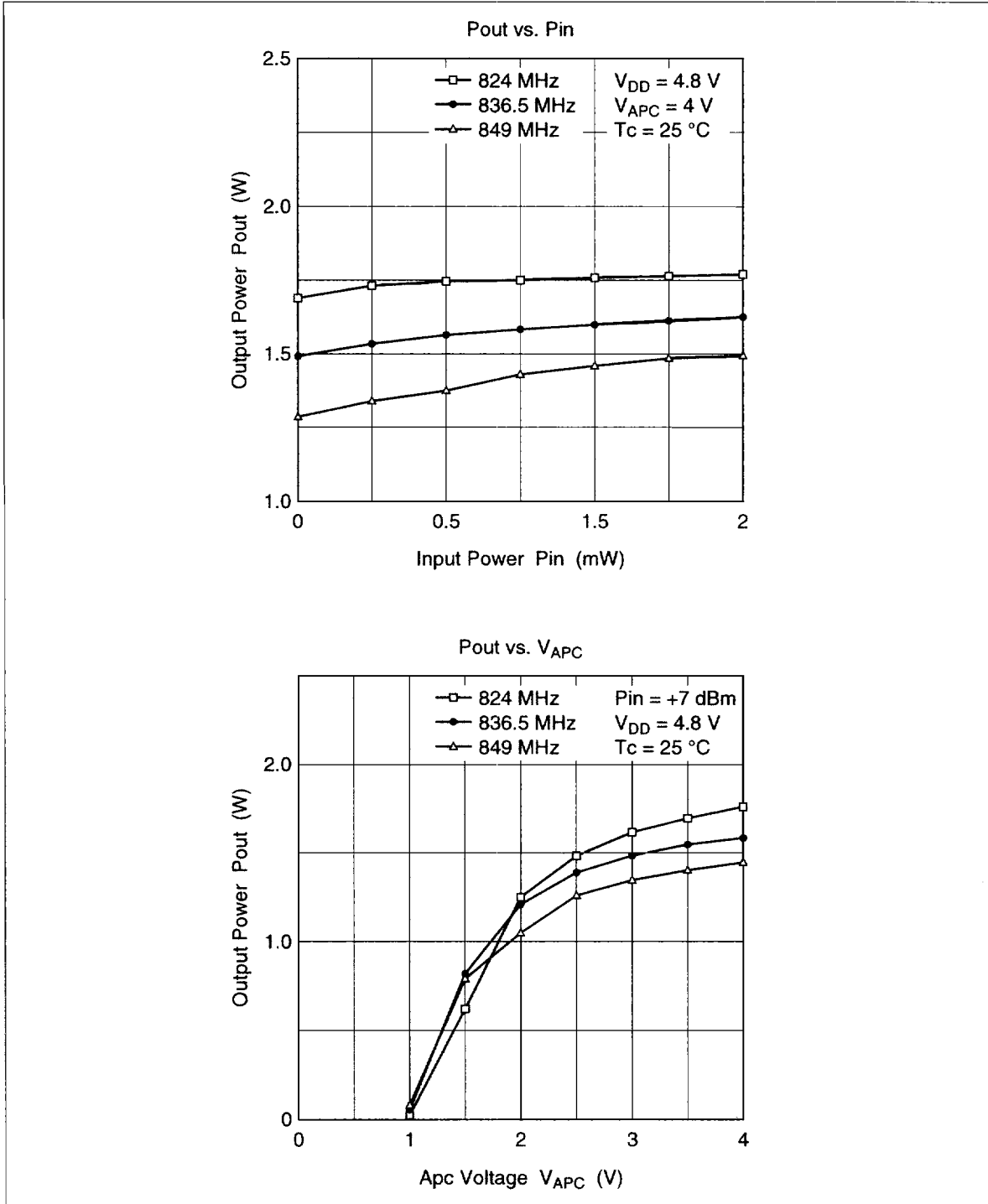
Item	Symbol	Rating	Unit
Supply voltage	VDD	10	V
Supply current	IDD	1.5	A
VAPC voltage	VAPC	7	V
Input power	Pin	40	mW
Operating case temperature	Tc (op)	-30 to +100	°C
Storage temperature	Tstg	-30 to +100	°C

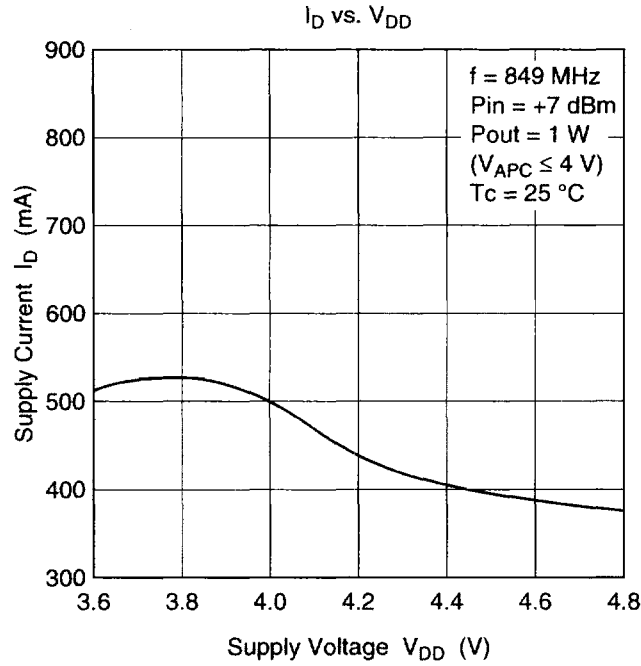
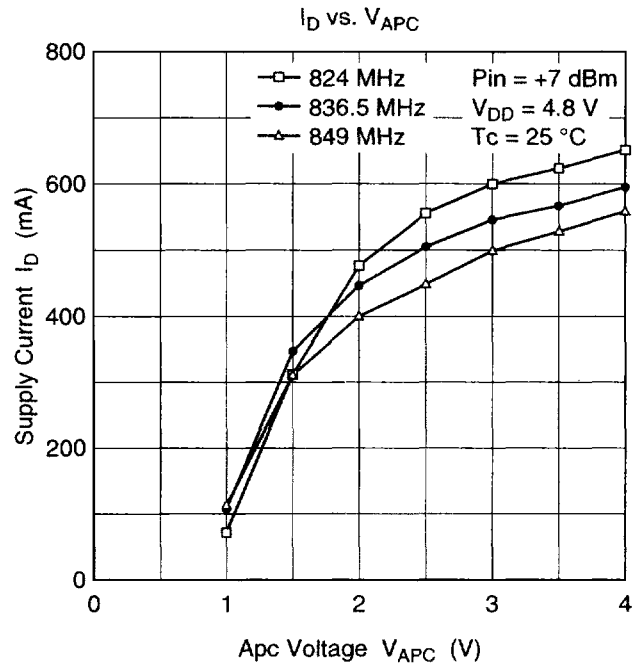
Electrical Characteristics (Tc = 25°C)

Item	Symbol	Min	Typ	Max	Unit	Test Condition
Drain cutoff current	IDS	—	—	100	μA	VDD = 10 V, VAPC = 0 V, Rg = RI = 50 Ω
Total efficiency	ηT	50	55	—	%	f = 824, 849 MHz, Pin = +7 dBm,
2nd harmonic distortion	2nd H.D.	—	-40	-30	dBc	VDD = 4.8 V, Rg = RI = 50 Ω
3rd harmonic distortion	3rd H.D.	—	-40	-30	dBc	Pout = 1.2 W (at APC controlled)
Input VSWR	VSWR (in)	—	2	3	—	
Output power	Pout	1.25	1.4	—	W	f = 824, 849 MHz, Pin = +7 dBm, VDD = 4.8 V, VAPC = 4 V, Rg = RI = 50 Ω
Isolation	—	—	-10	+6	dBm	f = 824, 849 MHz, Pin = +7 dBm, VDD = 4.8 V, VAPC = 0.5 V, Rg = RI = 50 Ω
Stability	—	No parasitic oscillation			—	f = 824 to 849 MHz, Pin = +7 dBm, VDD = 4.3V to 6 V, Pout ≤ 1.3 W, Rg = 50 Ω, Load VSWR = 3:1 All phases

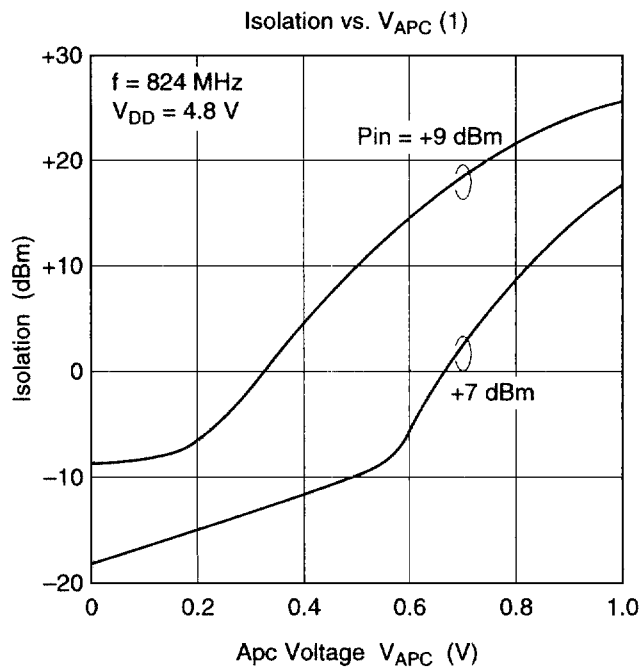
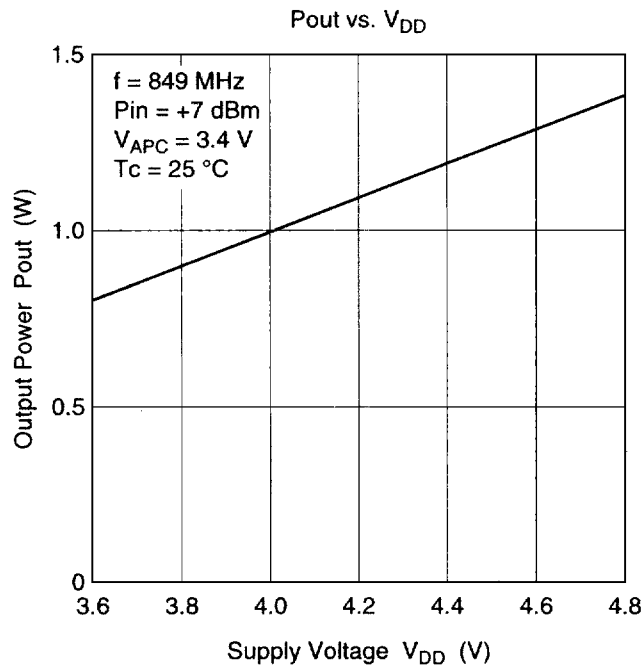
PF0075A

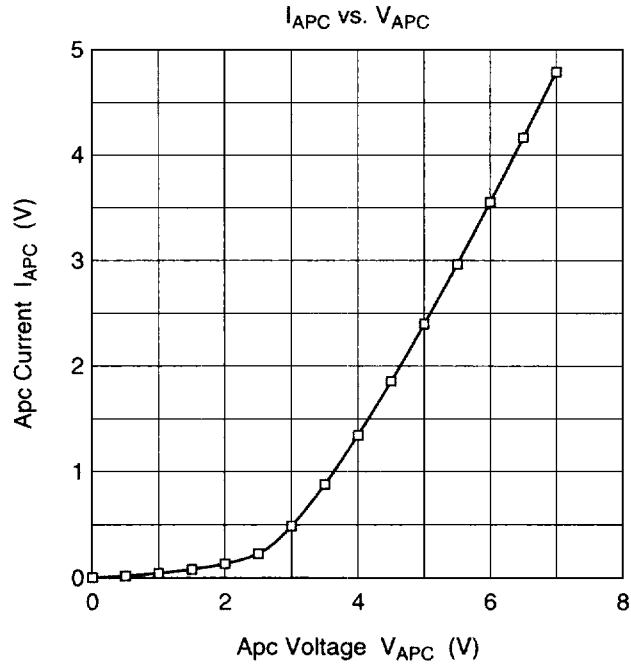
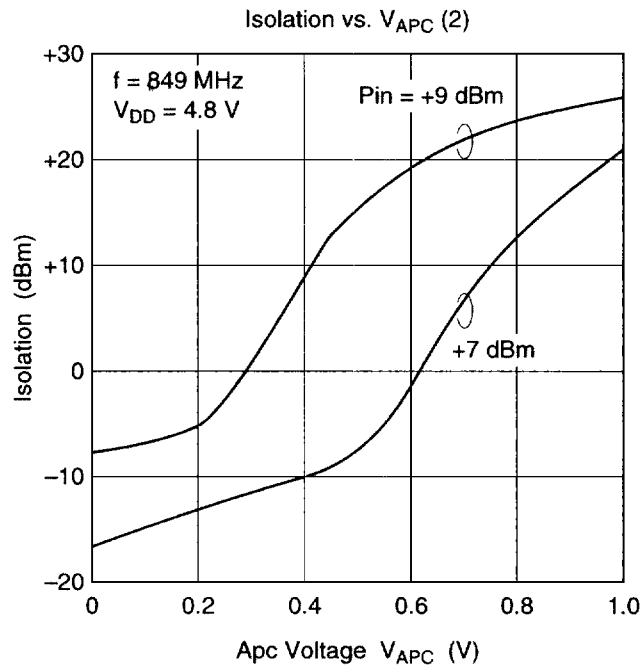
Characteristics Curve





PF0075A





PF0075A

Package Dimensions

Unit: mm

