

PLEASE CHECK WWW.MOLEX.COM FOR LATEST PART INFORMATION

Part Number: [5600200320](#)
Status: **Active**
Overview: [DuraClik™ Connector System](#)
Description: [DuraClik™ Wire-to-Board Header, Single Row, Vertical, 3 Circuits, Tin \(Sn\) Over Nickel](#)

Documents:

[3D Model](#) [RoHS Certificate of Compliance \(PDF\)](#)
[Drawing \(PDF\)](#)

General

| | |
|----------------|--|
| Product Family | PCB Headers |
| Series | 560020 |
| Application | Signal, Wire-to-Board |
| Comments | The Operating Temperature Range when used with DuraClik series 502351 is -40°C to +105°C. It is -40°C to 125°C when used with DuraClik ISL series 560123 or TPA series 505151. |
| Overview | DuraClik™ Connector System |
| Product Name | DuraClik™ |
| UPC | 887191747095 |

Physical

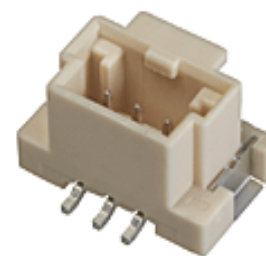
| | |
|--------------------------------|----------------------------------|
| Breakaway | No |
| Circuits (Loaded) | 3 |
| Circuits (maximum) | 3 |
| Color - Resin | Natural |
| Durability (mating cycles max) | 30 |
| First Mate / Last Break | No |
| Glow-Wire Compliant | No |
| Keying to Mating Part | Yes |
| Lock to Mating Part | Yes |
| Mated Height | 6.40mm |
| Material - Metal | Copper Alloy |
| Material - Plating Mating | Tin over Nickel |
| Material - Resin | Polyamide |
| Net Weight | 0.578/g |
| Number of Rows | 1 |
| Orientation | Vertical |
| PCB Locator | No |
| PCB Retention | Yes |
| Packaging Type | Embossed Tape on Reel |
| Pitch - Mating Interface | 2.00mm |
| Polarized to Mating Part | Yes |
| Polarized to PCB | Yes |
| Stackable | No |
| Temperature Range - Operating | -40°C to +105°C, -40°C to +125°C |
| Termination Interface: Style | Surface Mount |

Electrical

| | |
|-------------------------------|------------------|
| Current - Maximum per Contact | 3.0A |
| Voltage - Maximum | 125V AC (RMS)/DC |

Solder Process Data

| | |
|--|--------|
| Duration at Max. Process Temperature (seconds) | 004 |
| Lead-free Process Capability | REFLOW |
| Max. Cycles at Max. Process Temperature | 001 |
| Process Temperature max. C | 255 |



Series image - Reference only

EU ELV
Compliant

EU RoHS
Compliant
REACH SVHC

China RoHS

Not Contained Per -
ED/21/2016 (20 June
2016)

Halogen-Free
Status

Not Low-Halogen

**Need more information on product
environmental compliance?**

Email productcompliance@molex.com
Please visit the [Contact Us](#) section for any
non-product compliance questions.

China ROHS
ELV

Green Image
Compliant

Search Parts in this Series
[560020 Series](#)

Mates With
DuraClik™ Crimp Housings [502351](#) ,
[560123](#) , [505151](#)

Material Info

Reference - Drawing Numbers

Product Specification

Sales Drawing

RPS-502351-010-JP

SD-502352-003-JP, SD-560020-001, SD-560020-003

This document was generated on 07/06/2016

PLEASE CHECK WWW.MOLEX.COM FOR LATEST PART INFORMATION