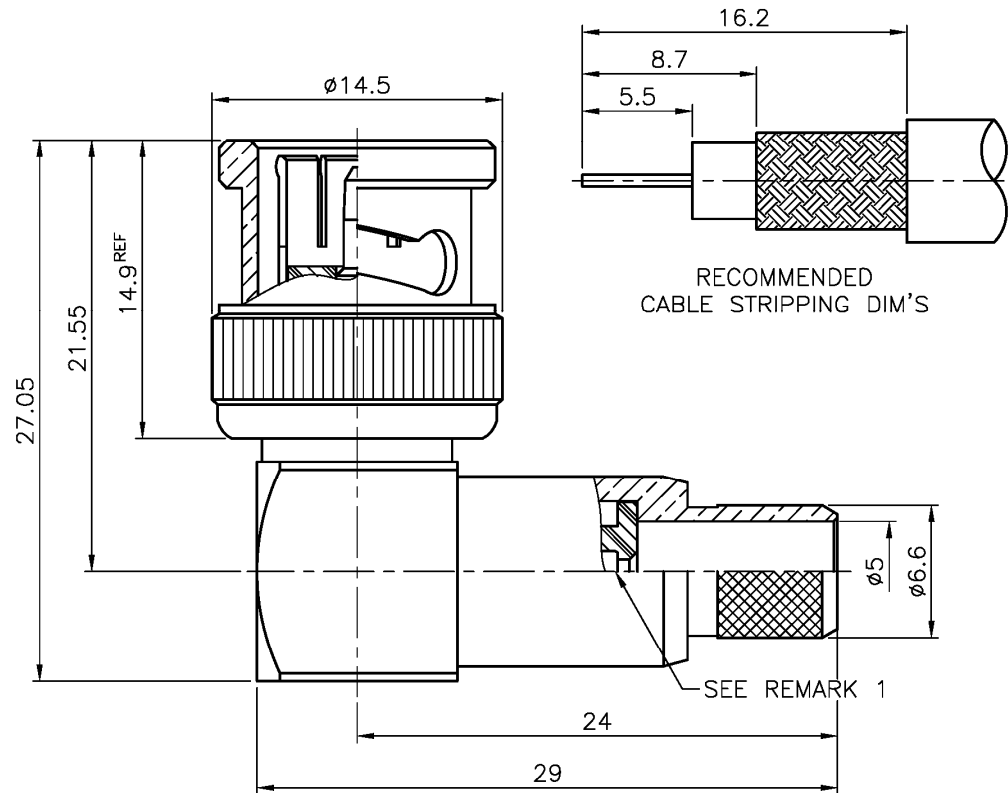
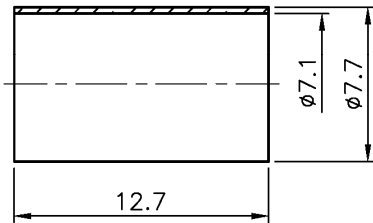


Accepts  $\varnothing 0.54\text{--}\varnothing 1.06$  Solid Pin



Item	Name	Material	Finish
1	Cube Body	Brass	Nickel over Copper
2	Contact Pin	Brass	Gold over Nickel over Copper
3	Contact Pin	Beryllium Copper	Gold over Nickel over Copper
4	Insulator	PPS+40%GF	Natural
5	Braid Holder	Brass	Nickel over Copper
6	Body	Brass	Nickel over Copper
7	Insulator	Delrin	White
8	Washer	SS41	Nickel over Copper
9	Spring	SK5	Nickel over Copper
10	C Ring	SS41	Nickel over Copper
11	Gasket	Silicone	Red
12	Shell	Brass	Nickel over Copper
13	Ferrule	Brass	Nickel over Copper

RoHS compliant

Rev.	Description	Date	Approved	Drawing	Name	Date
				Approved	Howard	12/3/08
				Checked	Lizzy	12/3/08
				Drawn	Tina	12/3/08
				0.0 ± 0.35	0.00 ± 0.20	Angles ± 3'
				UNIT: mm		

**Central Components Manufacturing**  
 440 Lincoln Blvd., Middlesex, New Jersey 08846  
 Phone 732 469-5720 888 288-5152 Fax 732 469-1919

Part No.: **CRF-BNC-7011NR-700CF00B**

Description: BNC R/A Crimp Plug (75 ohms) (for CT-100)