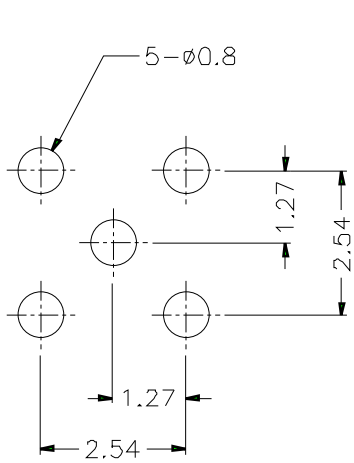
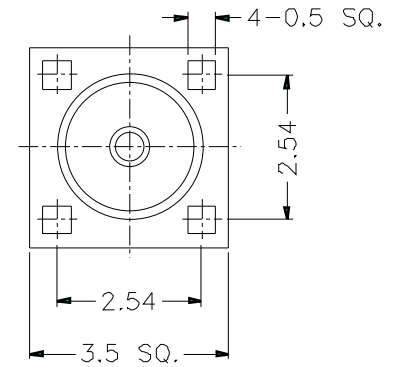
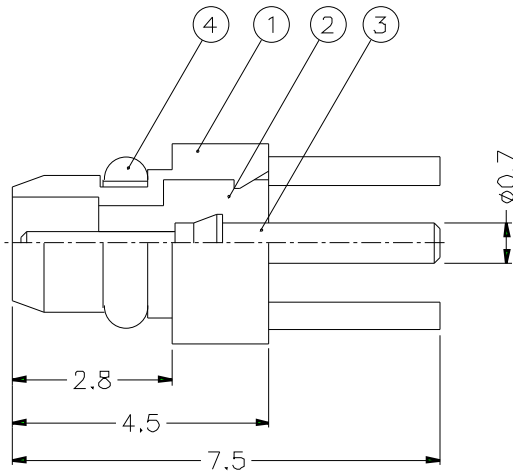


1			2			3			4			5			6			7			8		
REVISIONS																							
ISS	ZONE	DESCRIPTION\PER REQUEST\DATE																					



PCB MOUNTING HOLE



NOTES: FINISH (PLATING THICKNESS IN MICRO-INCHES)

1. BRASS PER QQ-B-626
2. GOLD PL. 3 MIN. THICK OVER NICKEL PL. 100 MIN. THICK OVER COPPER STRIKE
3. BERYLLIUM COPPER PER QQ-C-530
4. GOLD PL. 30 MIN. THICK OVER NICKEL PL. 100 MIN. THICK OVER COPPER STRIKE
5. TEFLON MIL-P-19468

DIMENSIONS ARE IN MILLIMETERS				PART NO.	
UNLESS OTHERWISE SPECIFIED TOLERANCES				MMCX1251N1-3GT30G-50	
0.5-6 = ±0.2				APPROVED	DATE
6-30 = ±0.4					10-11-01'
30-120 = ±0.6				CHECKED	DATE
120-315 = ±1					10-11-01'
315-1000 = ±1.6				DRAWN	DATE
1000-2000 = ±2.4					10-11-01'

4	RETAINER RING	NOTE 3	NOTE 2	1	MMCX1121A1-5-C
3	CONTACT PIN	NOTE 1	NOTE 4	1	MMCX1251N1-3
2	INSULATOR	NOTE 5	NATURAL	1	MMCX1251N1-2T-50
1	BODY	NOTE 1	NOTE 2	1	MMCX1251N1-1
NO.	DESCRIPTION	MATERIAL	FINISH	Q'TY	DRAWING NO.

Amphenol	
TITLE	MMCX P.C. MOUNT PLUG
DRAWING NO.	KJ-MMCX1251N1-3GT30G-50
ITEM NO.	

NO.	DESCRIPTION	MATERIAL	FINISH	Q'TY	DRAWING NO.	SCALE	8/1	ISSUE	A	FILE NO.
-----	-------------	----------	--------	------	-------------	-------	-----	-------	---	----------