

# Control relays

CA2-D and CA3-D  
Control circuit : a.c.



References

1



CA2-DK22●●



CA2-DN31●●

Control circuit : a.c.

Type	Number of contacts	Composition		Basic reference. Complete with code indicating control circuit voltage (2)	Weight kg
Instantaneous	4	4	—	CA2-DN40●●	0.320
		3	1	CA2-DN31●●	0.320
		2	2	CA2-DN22●●	0.320
		2	2	CA2-DC22●●	0.320
		including 1 N/O and 1 N/C make before break			
Mechanical latch/memory	4	2	2	CA2-DK22●●	0.580

**Specifications**

Protective treatment	"TH" as standard
Fixing	On 35 mm rail or Ø 4 mm screw fixing
Cabling	By screw clamp terminals
Terminals	Protected against direct finger contact with ready-to-tighten captive screws (1)

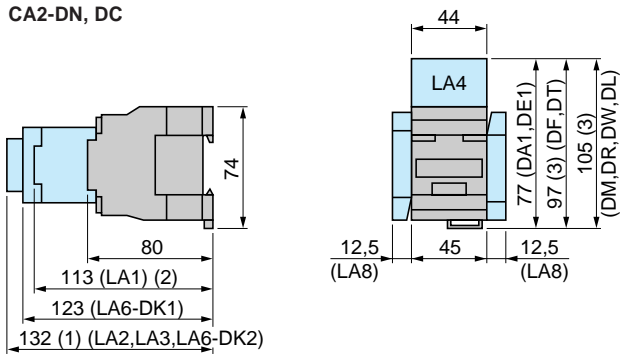
Marking and contact positions conforming to CENELEC EN 50005, EN 50011.

(1) Telemecanique patented system which prevents screws from tightening themselves (e.g. due to vibration during transport).

(2) Standard control circuit voltages (for other voltages, please consult your Regional customer centre).

Volts ~	24	42	48	110	220/230	230	240	380/400	400	415	440	500	660
50 Hz	B5	D5	E5	F5	M5	P5	U5	Q5	V5	N5	R5	S5	Y5
60 Hz	B6	—	E6	F6	M6	—	U6	Q6	—	N6	R6	—	—
50/60 Hz	B7	D7	E7	F7	M7	P7	U7	Q7	V7	N7	R7	—	—

CA2-DN, DC

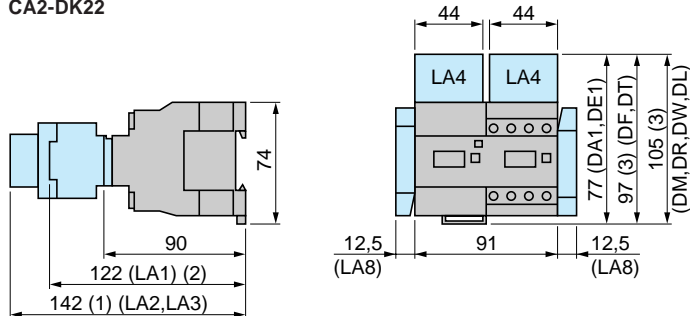


(1) + 4 mm with lead sealing kit LA9-D901

(2) With 2 or 4 contacts

(3) With or without combined use of coil suppressor module : LA4-DA1●, DE1●

CA2-DK22

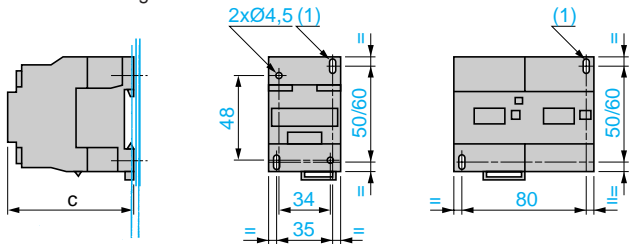


(1) + 4 mm with lead sealing kit LA9-D901

(2) With 2 or 4 contacts

(3) With or without combined use of coil suppressor module LA4-DA1●, DE1●

CA2, CA3-DN, DC, DK  
Panel mounting

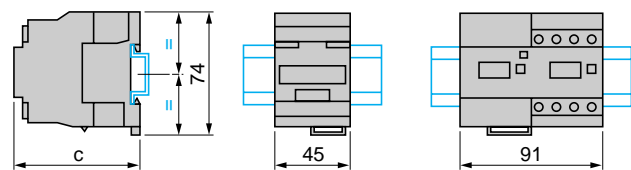


c	CA2-			CA3-		
	DN	DC	DK	DN	DC	DK
	80	80	90	115	115	125

(1) 2 elongated holes 4.5 x 9

CA2, CA3-DN, DC, DK

Mounting on rail AM1-DP200 or DE200



c (AM1-DP200)	CA2-			CA3-		
	DN	DC	DK	DN	DC	DK
	82	82	91	117	117	127
c (AM1-DE200)	89	89	98	124	124	134