

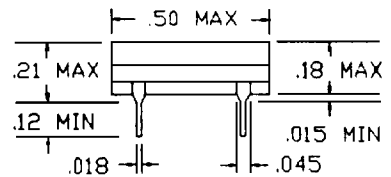
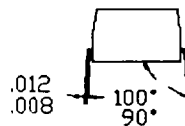
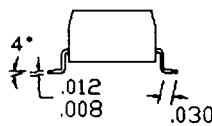
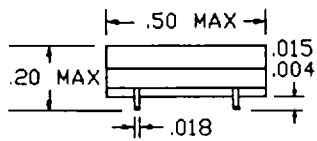
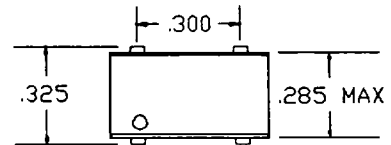
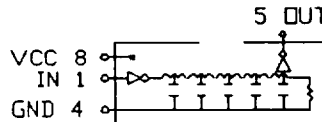
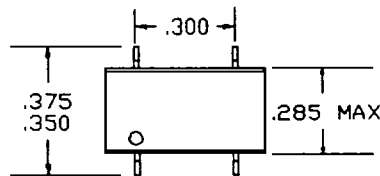
bel / defining a degree of excellence

FAST

LOGIC DELAY MODULES 1 TAP LEADING EDGE CONTROL

S423 SERIES

A463 SERIES

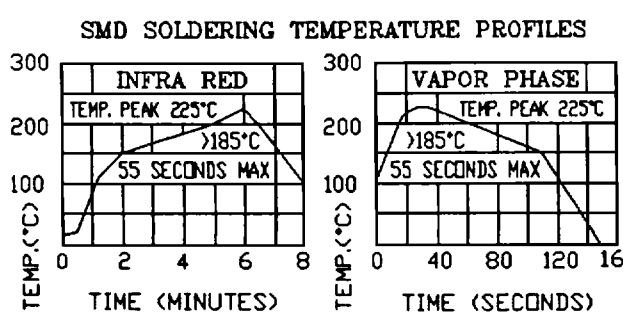


COPLANARITY ± .002

SMD PART NUMBER	THRU-HOLE PART NUMBER	TIME DELAY	RISE TIME
S423-0004-06	A463-0004-06	4±1.0NS	3 NS
S423-0005-06	A463-0005-06	5±1.0NS	3 NS
S423-0006-06	A463-0006-06	6±1.0NS	3 NS
S423-0007-06	A463-0007-06	7±1.0NS	3 NS
S423-0008-06	A463-0008-06	8±1.0NS	3 NS
S423-0009-06	A463-0009-06	9±1.0NS	3 NS
S423-0010-06	A463-0010-06	10±1.5NS	3 NS
S423-0012-06	A463-0012-06	12±1.5NS	3 NS
S423-0015-06	A463-0015-06	15±1.5NS	3 NS
S423-0020-06	A463-0020-06	20±1.5NS	3 NS
S423-0025-06	A463-0025-06	25±1.5NS	3 NS
S423-0030-06	A463-0030-06	30±2.0NS	3 NS
S423-0035-06	A463-0035-06	35±2.0NS	3 NS
S423-0040-06	A463-0040-06	40±2.0NS	3 NS
S423-0045-06	A463-0045-06	45±2.0NS	3 NS
S423-0050-06	A463-0050-06	50±2.5NS	3 NS
S423-0075-06	A463-0075-06	75±3.5NS	3 NS
S423-0100-06	A463-0100-06	100±5.0NS	3 NS

DELAYS MEASURED AT 1.5 V LEVELS ON LEADING EDGE ONLY
RISE TIMES MEASURED FROM 0.75 V TO 2.4 V LEVELS
MEASUREMENTS MADE WITH NO LOADS

OTHER DELAYS AND TOLERANCES UPON REQUEST



TEST CONDITIONS

Ein	PULSE VOLTAGE	3.2 VOLTS
Trin	RISE TIME	3.0 NS (10%-90%)
PW	PULSE WIDTH	1.2 x TOTAL DELAY
PP	PULSE PERIOD	4 x PULSE WIDTH
Iccl	SUPPLY CURRENT	35 ma TYPICAL
Vcc	SUPPLY VOLTAGE	5.0 VOLTS
Ta	AMBIENT TEMPERATURE	25°C

ELECTRICAL CHARACTERISTICS

	MIN	MAX	UNIT
Vcc	4.75	5.25	V
Vih	2.0		V
Vil		0.8	V
Iik		-18	mA
Ioh		-1	mA
Iol		20	mA
Voh	2.7		V
Vol		0.5	V
Vik		-1.2	V
Iih		20	uA
Iil		-0.6	mA
Ios	-60	-150	mA
Icch		25	mA
Iccl		40	mA
Ta	0*	+70*	C

PW MINIMUM INPUT PULSE WIDTH 40% OF TOTAL DELAY
d MAXIMUM DUTY CYCLE 50%
Tc TEMP. COEFF. OF TOTAL DELAY 100*(25000/TOTAL DELAY) PPM/C

DRIVE CAPABILITIES

Nh	LOGIC 1 FANOUT	10 TTL LOADS MAX
Nl	LOGIC 0 FANOUT	10 TTL LOADS MAX

NOTES:

- * TRANSFER MOLDED FOR BETTER RELIABILITY
- * COMPATIBLE WITH TTL AND DTL CIRCUITS
- * TERMINALS: ELECTRO-TIN PLATE PHOSPHOR BRONZE
- * PERFORMANCE WARRANTY IS LIMITED TO SPECIFIED PARAMETERS LISTED

|| SMD ONLY ||

- * TAPE & REEL AVAILABLE - 24mm WIDE x 12mm PITCH 500 PIECES/13' REEL
- * DESIGNED FOR VAPOR PHASE OR IR SOLDERING WITH TEMPERATURES BELOW 230°C FOR UP TO 90 SECONDS
- * SPECIFICATIONS SUBJECT TO CHANGE WITHOUT NOTICE

BELFS011