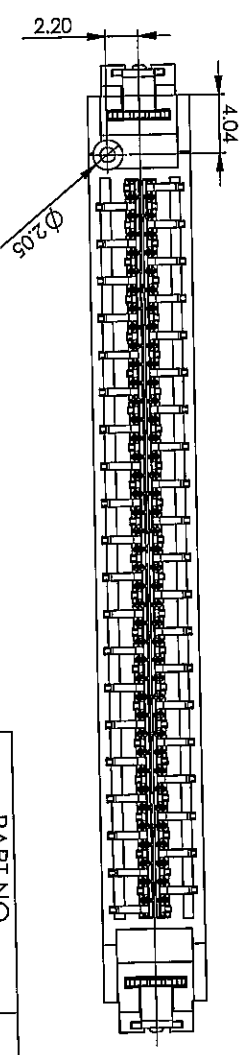
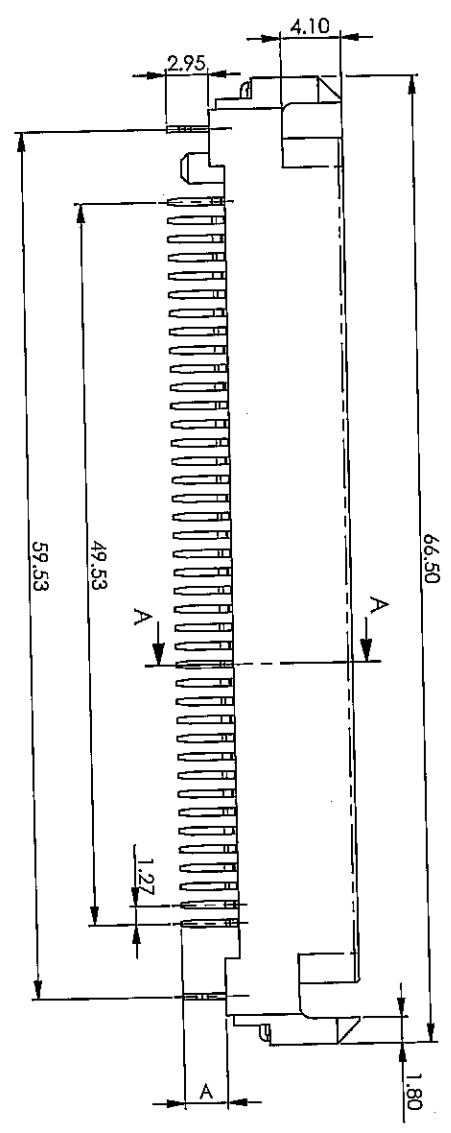
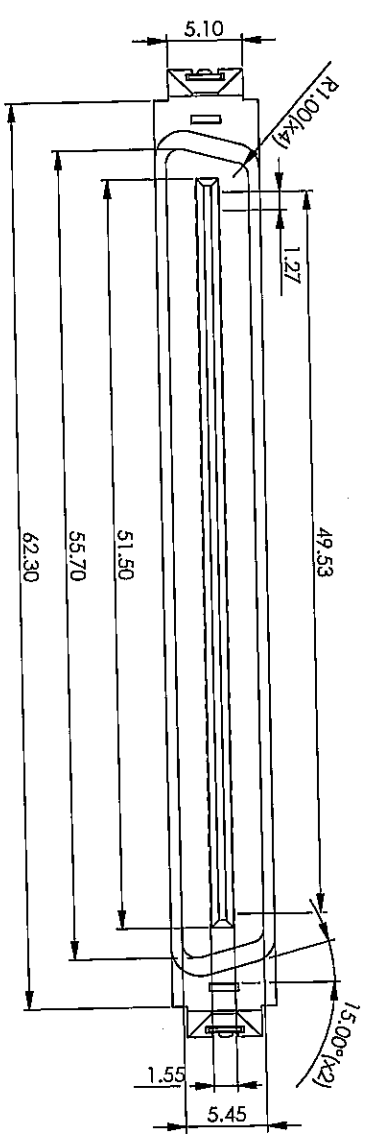
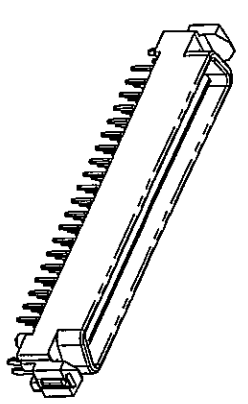
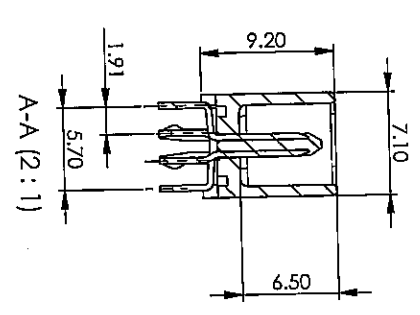


REV	MODIFICATION	DRAWN	APPROVED
D	EN111904	Judy	

NOTES:
 1. MATERIAL:
 (a) Insulator: CP 94-V0
 (b) Contact: Copper alloy
 (c) ESD: Copper alloy

2. Plating:
 (a) Contact:
 Contact area: Gold plated
 Solder area: Tin/Lead over Nickel
 Under plating: Nickel plated overall
 (b) ESD:
 Tin/Lead over Nickel
 Under plating: Nickel plated overall
 3. PART NO.: SCA080-X0-11X2

0-DIM. A=3.40mm
 1-DIM. A=3.00mm
 PLATING:
 0-GOLD FLASH
 2-10u" GOLD
 3-15u" GOLD
 UNLEAD PLATING:
 A-GOLD FLASH
 C-10u" GOLD
 D-15u" GOLD



GENERAL TOLERANCE	X ± 0.50	X ± 5°
	X ± 0.30	X ± 2°
	XX ± 0.20	XX ± 1°
	XXX ± 0.10	XXX ± 0.5°

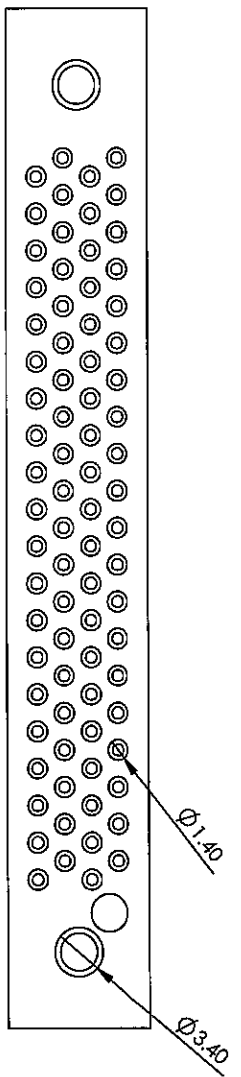
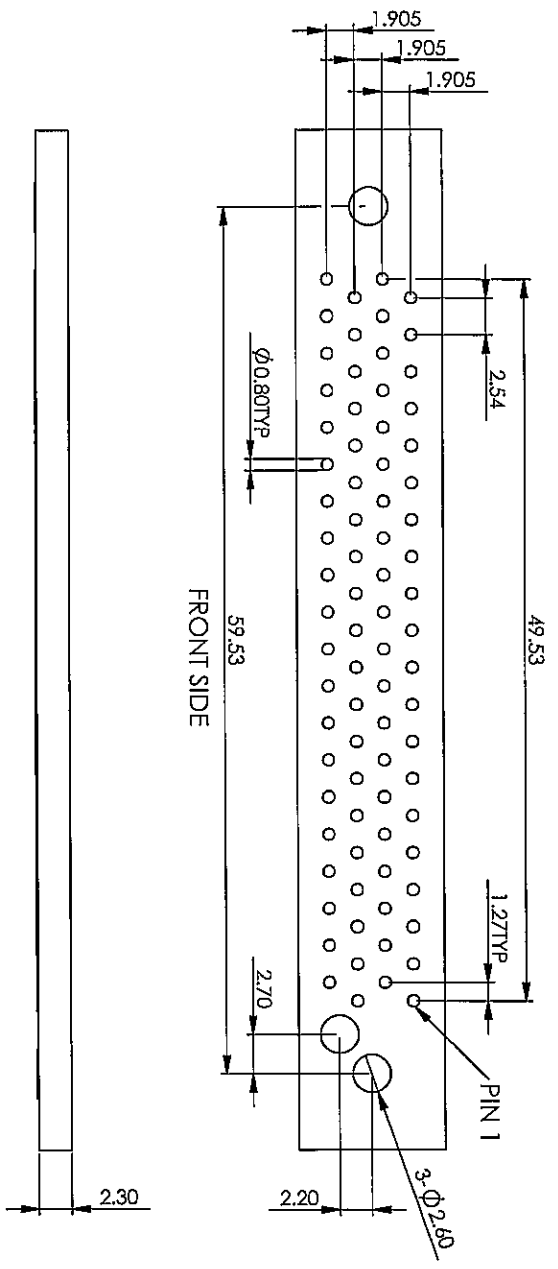
PART NO.	DIM. A	APPROVAL	CHECKED	DRAWN	SCALE	SHEET
SCA080-X0-1102	3.4	<i>[Signature]</i>	<i>[Signature]</i>	<i>[Signature]</i>	NONE	1/2
SCA080-X0-1112	3.0					

A B C D E F G H I J

1 2 3 4 5 6 7 8 9 10 11 12

QP-04-04-B

REV	MODIFICATION	DRAWN	APPROVED
D	EN111904	Judy	



GENERAL TOLERANCE		TITLE	DWG NO.
X ± 0.50	X ± 5°		
X ± 0.30	X ± 2°		
.XX ± 0.20	.XX ± 1°		
.XXX ± 0.10	.XXX ± 0.5°		
UNIT	PART NO.		
mm	SCA080-X0-11X2		

APPROVAL	CHECKED	DRAWN	SCALE	PROJ.	DATE
<i>[Signature]</i>	<i>[Signature]</i>	<i>[Signature]</i>	NONE		2/2

QP-04-04-B